



# Council News

a newsletter from the Clutha District Council

p2  
Speed limits

p3  
STEM  
careers

p4  
Water

November 2023 | [www.cluthadc.govt.nz](http://www.cluthadc.govt.nz) | 0800 801 350 | [help.desk@cluthadc.govt.nz](mailto:help.desk@cluthadc.govt.nz) | CluthaDistrictCouncil



## From the Mayor

This is an exciting but extremely challenging time for councils as we prepare for our all important Long Term Plan (LTP). This is the one opportunity this term that we have to join with you all in plotting our district's trajectory for the next ten years and while all LTP's are challenging this one looms as the most demanding in living memory.

**Mayor** Bryan Cadogan

Thankfully, by the time you read this newsletter the uncertainty that has built up over this year's election for councils will be partially resolved.

But any one that believes issues like Three Waters will be overcome via an election result is about to receive a nasty reality check because there is no easy option when it comes to water, wastewater and stormwater for all urban communities.

For Clutha we find ourselves at a defining crossroad. We have, through community consultations established what each individual area needs for them to blossom and reach their true potential.

But many of these projects are still on the drawing board awaiting the communities final push, from concept to reality. Every day that this takes runs the gauntlet of the project being ravaged by inflation and a focus on delivery will undoubtedly be required.

Inflation, staff shortages and material increases are not just the domain of community projects. We like all councils must consider the implications of delivering core services in this environment and the balance between wants, needs and how we still need to consider the bigger picture when looking at our long term vision.

I look back at how our recent LTPs have fundamentally changed the vibrancy and future prospects of our District.

It has only been through a positive and coordinated response that we have been able to reverse many of the most critical issues that our district has faced.

I think it is fair to say that our population increases have transformed our overall outlook from stagnation and decline into growth and vibrancy.

By collectively going to our unique strengths and believing in ourselves we have progressed where others have stalled.

I can not imagine how dour our predicament would now be if we had taken a less progressive pathway and I thank all those that contributed over recent years to the ongoing discussions and believed in a brighter future for us all.

It definitely shows the importance and the need to get involved and have your say in the LTP when consultation opens early next year.

I look forward to catching up with you all as council works with communities to devise new strategies and enhance all the good things that have been progressing to ensure that as always we are heading - Onwards and Upwards.



# “ Consultation on speed limits



**We're proposing changes to speed limits in Clutha, to improve safety in line with the Government's nationwide 'Road to Zero' campaign, which has a target of reducing deaths and serious injuries on our roads by 40% by 2030.**

Consultation opens in November on Clutha District Council's draft Speed Management Plan (SMP) – a plan aimed at addressing safe and appropriate speed limits and supporting infrastructure over the next few years.

Speed Management Plans are required under new Government legislation relating to setting of urban speed limits.

The new legislation proposes that speeds can be reduced down to 30-40km/h for local streets and city hubs, 40-60km/h for urban connector streets and 80-100km/h for transit corridors (e.g. motorways and urban expressways).

The new Land Transport Rule: Setting

of Speed Limits 2022 provides a new framework for setting speed limits across New Zealand through speed management plans that address recommended safe and appropriate speed limits, related transport infrastructure and speed monitoring cameras.

Council is seeking your feedback on aspects of the draft SMP that have been developed in line with National Transport Rule guidelines.

The community will have six weeks to review and provide feedback.

A key priority is to reduce speed around all of our districts schools, rural towns and town centres.

The changes proposed in the draft Speed Management Plan are expected to decrease the number of speed-related crashes and encourage people to walk and bike, especially school children.

It is also aimed at reducing the risk to pedestrians of being seriously injured or killed.

New Zealand has committed to decisive action on road safety under Waka Kotahi Road to Zero: road safety strategy for 2023 – 2030.

Road to Zero adopts a vision of a New Zealand where no-one is killed or seriously injured on the country's roads, streets and footpaths, with a target to reduce annual deaths and serious injuries by 40 per cent by 2030.

While Council does not have the ability to change the Waka Kotahi mandate for 30km/h around schools, community feedback is sought on other proposed changes.

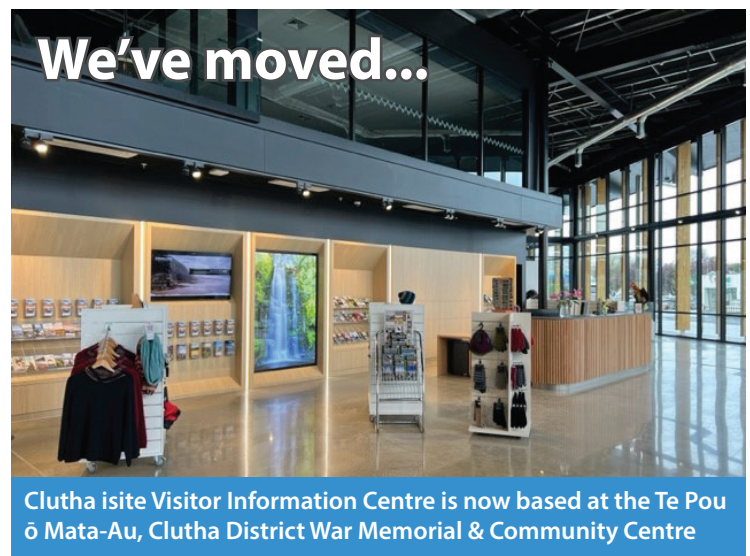
**Find out more and provide your feedback:**

[www.cluthadc.govt.nz/speed-plan](http://www.cluthadc.govt.nz/speed-plan)



**Clutha District Council Libraries**  
**Summer Reading Programme**  
Our Summer Reading Programme starts December 1st!  
Always fun to be had at your local community Library, and FREE!

Scan our QR code to find out more on our Facebook page. Be sure to follow us!



**We've moved...**

Clutha isite Visitor Information Centre is now based at the Te Pou ō Mata-Au, Clutha District War Memorial & Community Centre



Clutha District Council's Projects' Engineer Hebe Juan helped Milton School students design, build and launch their own water rocket recently.

The rocket challenge is an educational programme which runs in schools and teaches children about Newton's laws, the engineering design process, and working as a team.

Ms Juan volunteers as an industry ambassador and said it was a fun way for kids to learn and hopefully encourage more young people to take an interest in Science, technology, engineering and mathematics (STEM) careers.

The free schools' programme seamlessly blends the thrill of fun, hands-on activities, like launching rockets, with STEM learning.



Pictured: Aubrey McCleery-Evans, Skylah Butler, Bella Mathieson, Riria Smith.



Pictured: Ms Juan showing kids how to launch a rocket.



## Report a problem

The **Antenno App** makes it easy to report any problem with Council services directly to Council.

However, for **URGENT** issues ring us on 0800 801 350. If we're unable to take your call, we're likely engaged in another phone conversation. Kindly leave a message and we will call you back.

[www.cluthadc.govt.nz](http://www.cluthadc.govt.nz)

## Summer Water Restrictions

Summer water restrictions are implemented throughout the Clutha District each year on December 1.

Stage 1 restrictions are always put in place to try and avoid more stringent restrictions as summer progresses.

If more stringent restrictions are not implemented, the Stage 1 restriction remains in place till the end of March, and then we review whether they can be lifted or extended.

**Stage 1 summer mode** – Time restrictions only (8pm-8am watering allowed), systems not to be left unattended or on overnight.

**Stage 2 moderate water restrictions** – Sprinkler and irrigation system ban and time restrictions (8pm- 8am handheld watering only allowed), not to be left unattended or on overnight.

**Stage 3 high level water restrictions** – Hosing ban apart from one day a week between 8pm-8am, sprinkler and irrigation system ban, please avoid washing cars and boats etc.

**Stage 4 extreme water restrictions** – Complete hosing, sprinkler and irrigation system ban, no washing of boats, cars or using hoses at all. Minimise indoor water usage.

Council also asks people to report water leaks in council pipes and fittings to help with our water conservation. You can do this by calling Council on 0800 801 350 or reporting the problem via our Antenno App or at [www.cluthadc.govt.nz/do-it-online](http://www.cluthadc.govt.nz/do-it-online)

## Are you looking for a new job or career?

We are the Clutha District Council and we're looking for outstanding talent.

Looking for a new challenge?



[www.cluthadc.govt.nz/council-jobs](http://www.cluthadc.govt.nz/council-jobs)

## Milton Pool expected to open soon

Keep an eye out for the opening date via the Milton Pool Facebook page. Opening hours are also available from Council's website: [cluthadc.govt.nz/swimming-pools](http://cluthadc.govt.nz/swimming-pools)





# Water

Water is one of our most important services. Residents, industry, businesses and farms depend on a supply of water.

## Boil water notices

Some of our rural water schemes have been on boil water notices due to issues at the treatment plant and may mean water is not safe to drink.

Please check our website or give us a call if you're unsure what water scheme you're on and if there is an issue with your water.

We also ask home owners that have rental properties in Clutha – short or long term - to advise renters of any potential water issues.

If on a boil water notice, all water should be boiled before use for the following purposes:

- Drinking



- Washing and preparing food
- Making ice for use in drinks or food
- Coffee machines and soda dispensers (carbonated water makers)
- Preparing baby formula
- Cleaning teeth

Water should be brought to a rolling boil for 1 minute (or, if in a kettle, until it switches off), before being removed from the heat and allowed to cool naturally, without the addition of ice.

If stored, it should be covered or kept in clean, capped containers.

People should boil water even if they have a water treatment device. These are designed to improve taste, odour or chemical quality of the water but will not remove harmful microorganisms.

Showering and bathing doesn't require boiled water, but be careful not to swallow water – avoid the face area. Young children should be sponge-bathed. People with recent surgical wounds or a chronic illness may want to bathe in bottled or boiled water.

You can stay up to date with any issues affecting your water scheme by downloading the Antenna App or subscribing to receive updates by SMS text or email at [www.cluthadc.govt.nz/subscribe-for-updates](http://www.cluthadc.govt.nz/subscribe-for-updates).

If you have long-term tenants, we also recommend you encourage them to subscribe for these updates so they can be kept informed.

## RECYCLE YOUR CARTONS HERE!

Drop off your cut, opened and rinsed UHT and fresh milk, juice and stock cartons.

Visit Mt Coee Landfill, Health 2000, Café 55, Tokomairiro Community Hub, Tahatika Coffee Traders or The Lost Gypsy Gallery to recycle your used cartons and help to reduce waste in the Clutha District.

Do not put these items in your yellow-lidded wheelie bin.

Together we can remove these cartons from the waste stream recycling them into low carbon building products.

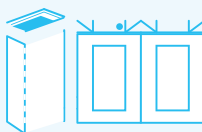


1 Cut along the top and sides of the carton

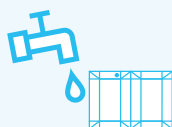


\*Note: leave the cap attached

2 Completely open up the carton



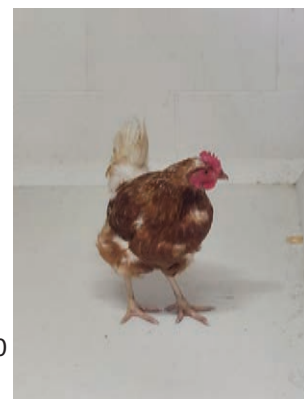
3 Rinse clean. Job done!



## From the animal team...

### Chickens:

The animal team at Clutha District Council have noticed an increase in the number of people with chickens following the increased price of eggs at the supermarket. If you have chickens in an urban area in Clutha we remind you that the Council bylaw limits you to keeping 10 hens and no roosters.



### Dogs:

Dog registrations are now overdue and from 1 October the animal team will be doing property checks and any unregistered dogs found, their owners will be fined.

## Get the latest information...

If there's important information about anything from burst pipes to planned water works, you can get this directly from the council by:

- Downloading the Antenna app from the App Store or Google Play
- Subscribe for text and email alerts:

[www.cluthadc.govt.nz/water-notice](http://www.cluthadc.govt.nz/water-notice)

