



Council News

a newsletter from the Clutha District Council

p2


Water

p3

Our Place

p4

Phoenix
Dam

February 2024 | www.cluthadc.govt.nz | 0800 801 350 | help.desk@cluthadc.govt.nz |  [CluthaDistrictCouncil](#)



From the Mayor

As preparations are being made for this year's Long-Term Plan consultation, we appreciate one issue is going to be paramount in all discussions, the unprecedented, anticipated approximate 20% rate increases. This single issue has weighed heavily on all councillors during initial deliberations. We need to work with you like never before so that everyone understands

Mayor Bryan Cadogan

the causative factors and the strategies we need to develop moving forward that best navigates these challenging, and ever-changing times.

The last four years have seen councils across the country consumed with the enormous logistical and financial challenges stemming from the Three Waters Reforms, which is almost entirely the driving force to rates increases. This is an extremely complex issue that requires clinical analysis, it has always been about the looming potential for ungodly financial ramifications but unfortunately has been sidetracked by irrelevant and divisive issues that we cannot allow to be repeated.

When you look at the evolution of water reticulation in New Zealand it seems like we have come to the end of the first cycle that started back in the 70's with Government money to construct reticulated networks for many of the more sparsely populated areas of New Zealand.

In Clutha's case most townships attached themselves to a rural water scheme. A totally practical and pragmatic solution that served us well for several years. It was understood and accepted that we would share the water with about 2 million livestock that demanded precedence in dry spells. We also appreciated that rain events would trigger boil water notices. Fast forward to today, and while most schemes have been upgraded several times the genesis of the scheme remains, but now struggle to meet the new requirements. We produce large amounts of pristine water primarily for stock, maintain New Zealand's third longest water reticulation network, that supplies over 80% of our population, along with 15 treatment plants, all requiring consents. This is the most extensive network by far for a population our size and the costs are huge. But the worries they present pale in comparison when you consider our 11 sewerage plants and associated networks in Clutha all incur the scrutiny of the new regulator Taumata Arowai. The combination of vast areas with numerous small communities each triggering consent requirements will always be Clutha's Achilles.

There are some numbers we all must be aware of. Firstly, our anticipated three waters' capital works program for the next 10 years is \$286,337,844 million (that is just 3 Waters). Our debt is tracking to exceed \$100,000,000 million next year, and we presently have 11,311 rating units in the Clutha District. This is the triangle that always comes into every calculation. If you change the capital program it directly effects either debt or rates. If you decrease rates, it

[Read More](#) →

From the Mayor continued...

either means more debt or less capital works. You don't have to make many calculations before arriving at the same conclusion all councils are facing; the present rating system is incapable of sustaining the pressure three waters is placing on budgets and new structures will inevitably be required.

The solution strikes me as being obvious. We need to gain efficiencies that cannot be obtained under the present system of Three Waters

operations remaining our own.

We also have a very blunt rating system that provides no flexibility. The technical skills required to correctly maintain 80 years plus infrastructure is best left to a small group of suitably qualified experts with as little political interference as possible.

Compare that with the present proposition of councils seeking collaboration with 'City Deals' as it is being referred to, which is leaving most rural councils in a lonely space. There is also the option of delaying the

inevitable by holding the Long Term Process back by 3 months which creates more issues than it solves. Then there is the prospect of being offered access to Government loans which we haven't received any details on at the time of writing but is very similar to offering a drowning person a glass of water.

This is a ghastly situation for our Nation to be confronted with. In fact, so ghastly that it will demand Government action and a solution, and fast. Meanwhile we need to still prepare and plan to best position our District to face the challenges that lie ahead.

spotlight on / water...



Council takes action regarding water quality at Milton plant



Clutha District Council has taken action to address drinking water detailed in a Compliance Order served by Taumata Arowai for the Milton drinking water supply.

Taumata Arowai served the compliance order on Friday 24 November following the regulator's review of Milton's drinking water safety plan (DWSP).

Clutha District Council Chief Executive Steve Hill said staff had been working on addressing the biggest concern expressed in the Compliance Order being the Clean in Place (CIP) recycling into the system.

Council has stopped the practice of recycling CIP waste back into the treatment process to address concerns raised by the regulator.

Mayor Bryan Cadogan said the Clutha District Council is committed to achieving compliance with a plan and actions moving forward.

"We are working closely with Taumata Arowai to achieve the goal of meeting the requirements of this order," Mayor Cadogan said.

The order also identified non-compliant issues regarding monitoring, recording and record keeping and necessary infrastructure upgrades.

Actions have been identified in conjunction with Taumata Arowai and are being implemented.

The compliance order requires the Council to install appropriate monitoring infrastructure, maintain accurate records of data, implement the supply's DWSP, and identify all necessary infrastructure upgrades, including for recycling waste streams.

The Compliance Order sets out what's needed to meet the requirements of the Water Services Act and Drinking Water Quality Assurance Rules and provide assurance to the regulator that Clutha District Council is providing a supply of safe drinking water to its community.

The Clutha District Council has until 31 January 2025 to ensure all directions or conditions relating to the order have been rectified.

The full compliance order and our FAQ's page can be viewed on our website.

Public Health Notice



Clutha's drinking water is classified as plumbosolvent, meaning it is capable of dissolving trace levels of heavy metals such as lead and copper out of some

household plumbing and fittings.

Some plumbing fittings potentially allow minute traces of metals to accumulate where water sits in the fittings for several hours.

Although the health risk is low, the Ministry of Health recommends you flush a cup full of water from your drinking water tap each morning, or after you have been away from your property, to remove any metals that may have dissolved from the plumbing fittings.

This simple precaution is recommended for all households in New Zealand, including those on public and private water supplies.

Taylor Park

A joint clean-up project by the Milton Lions Club and Milton Rotary, in support of the Bruce Community Pool, has resulted in a much-needed spruce up for Taylor Park.

About 25 members from both groups worked on the Taylor Park boundary fence in December, with traffic management support from Andrew Haulage.

After having several water blasters operating at once, the old State Highway 1 boundary fence is now looking great. The group also managed to replace 20m of fencing along Park Road.

Congratulations to all involved, what a fantastic result!



Rates rebate reminder

The rates rebate scheme provides financial assistance for households with low incomes.

Check your eligibility at www.cluthadc.govt.nz or give us a call on 0800 801 350.

Clydevale Boat Ramp

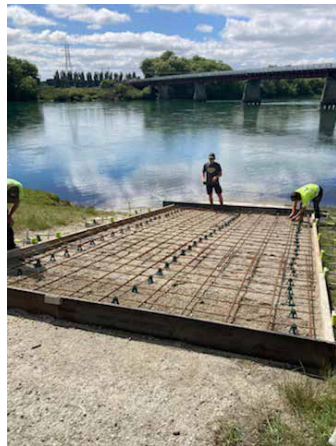
Community volunteers have been busy undertaking work at the Clydevale boat ramp.

A cattle stop has been installed at the reserve entrance, as well as culvert pipes and backfilling from the gate to the river. Repairs were made to the wooden fence and the lower section of the boat ramp.

Minor earthworks to level out the camping sites closest to the bridge were to follow, and then some planting.

This project was identified through the Our Place Clutha Valley consultation in early 2023. The contribution of the community's time and resources, together with funding and administrative support from Council, has helped bring the project to reality.

A fantastic effort by the community volunteers who have worked so hard to make this happen, it is looking great!



Summer Water Restrictions

Summer water restrictions have now been implemented throughout the Clutha District, and remain in place until at least the end of March, when we review whether they can be lifted or extended.

Stage 1 summer mode – Time restrictions only (8pm-8am watering allowed), systems not to be left unattended or on overnight.

Stage 2 moderate water restrictions – Sprinkler and irrigation system ban and time restrictions (8pm- 8am handheld watering only allowed), not to be left unattended or on overnight.

Stage 3 high level water restrictions – Hosing ban apart from one day a week between 8pm-8am, sprinkler and irrigation system ban, please avoid washing cars and boats etc.

Stage 4 extreme water restrictions – Complete hosing, sprinkler and irrigation system ban, no washing of boats, cars or using hoses at all. Minimise indoor water usage.

Council also asks residents to report water leaks in council pipes and fittings, to help with water conservation. You can do this by calling Council on 0800 801 350 or reporting the problem via our Antenna App or at www.cluthadc.govt.nz/do-it-online.

We're backing

Our Place Taieri Mouth

How about you?

We are developing the *Our Place* Taieri Mouth Community Plan, which will identify projects that Council and the community can progress to make Taieri Mouth a more attractive place to visit, live and work.

We are focusing on opportunities for development, community facilities, landscape and environment, river access, and walking and cycling opportunities.

Stop by for a chat with our Mayor and Councillors at Leitch Memorial Hall on **Thursday 8 February**, from 4 - 5pm or 6 - 7.30pm. We will also be at the Community Fun Day at Livingstonia Park on **Saturday 10 February** from 10am.

Phoenix Dam

Clutha District Council (CDC) is working with the owner of the 160-year-old Phoenix Dam, the Otago Regional Council as the regulator, and Emergency Management Otago to ensure the dam's continued safety.

CDC's Service Delivery Manager Jules Witt said Lawrence's water supply comes from Bluejacket Gully creek, which was fed from the dam, with a resource consent being held by CDC for the damming of water. The dam is on land owned by Port Blakely Limited.

Dam safety inspections by Opus (2006) and Riley Consultants Limited (2021) identified several potential dam safety deficiencies, condition issues, and areas of uncertainty with respect to the dam. These inspections were for CDC as the consent holder.

Riley was initially commissioned by CDC in 2023 to complete a Potential Impact Classifications (PIC) assessment of the dam which is a consent requirement. Port Blakely Limited carried out preliminary investigations, including preliminary stability and spillway capacity analyses to determine whether the dam meets the criteria for being 'dangerous', 'flood-prone' or 'earthquake-prone' under the Building Act 2004.

Mr Witt said the controlled emptying/dewatering would lower the level of the dam by 3 metres to the 75,000 cubic metre level, by way of a siphon system to significantly reduce the impact of risk of any potential failure of the dam. The dam has been assessed as higher risk under the Building Act.

Phoenix Dam is an historic water supply

dam located 3km north-east of and above Lawrence, Otago. The dam was originally constructed in c.1863 for goldmine sluicing.

Mr Witt said the operation is being undertaken to significantly reduce the impact of risk of any potential failure of the dam. The dam has been assessed as higher risk under the Building Act.

The embankment was nearly destroyed in 1864 because of overtopping during a flood but there appears to be no further reported cases of overtopping. There has been increased seepage noted at the toe of the dam.

Council is continuing to work with the agencies involved around emergency management plans, as well as our own plans for the continued supply of drinking water to the town.

FREEDOM CAMPING IN CLUTHA

There have been some changes to the way that freedom camping is managed in New Zealand, both nationally and locally.

Camping on local authority land is only permitted if your vehicle is certified self-contained.

All other types of camping is welcomed at commercial holiday parks and camping grounds. This includes tents, campervans, sleeper vans and non self-contained vehicles.

You can read more about camping within the Clutha District at www.cluthadc.govt.nz/camping



From the animal team

The Rosebank office was lucky enough to have some furry visitors. Three puppies were found in Kaka Point by tourists, who contacted Council. The dogs were picked up by the animal control team and

checked by vets. Council's Animal Control Administrator Michelle Tredwell took the puppies home and cared for them 24/7 after they were found.

Named after the area where they were found, it didn't take long for KP, Nugget and Moly's personalities to emerge. Nugget loves his food, KP is the quieter one and Moly has the personality of a big dog in a small dogs body!

The puppies have been rehomed, after receiving training and vaccinations.

Pictured from left: Council's Animal Control Team Marc Latta and KP, Karenne Walker and Nugget, Michelle Tredwell and Moly.



Get the latest information...

If there's important information about anything from burst pipes to planned water works, you can get this directly from the council by:

- **Downloading the Antenno app from the App Store or Google Play**
- **Subscribe for text and email alerts:**



www.cluthadc.govt.nz/water-notice



Clutha District Training and Development Awards

Clutha Development, in collaboration with the Mayors Taskforce for Jobs, hosted the annual Clutha District Training and Development Awards, held at Te Pou Ō Mata-Au - Clutha District War Memorial & Community Centre in late 2023.



Congratulations to the 23 award winning trainees, and a big thank you to their employers who encouraged and supported their training efforts.



WE'RE HIRING

Looking for a new career?

We are currently looking for a range of talent.

Visit our website today and find the perfect role for you.

www.cluthadc.govt.nz/council-jobs