

**NZ TRANSPORT AGENCY
SH8 BEAUMONT OTAGO
NEW BEAUMONT BRIDGE**

ISSUED FOR RMA APPROVALS

Project No: 6-CT012.00
Date: OCTOBER 2019

wsp | OPUS



**NZ TRANSPORT AGENCY
WAKA KOTAHI**

SHEET INDEX TABLE

SHEET No.	REVISION	DRAWING TITLE	
C01	B	DRAWING INDEX	CIVIL WORKS
C02	B	OVERALL LAYOUT PLAN	RP 5615 - 7100
C03	B	PROPOSED SH8 CENTRELINE LONGITUDINAL SECTION	RP 5659 - 7095
C04	B	LAYOUT PLAN	RP 5615 - 6200
C05	B	LAYOUT PLAN	RP 6200 - 6600
C06	B	LAYOUT PLAN	RP 6600 - 7100
C07	B	TYPICAL CROSS SECTIONS	S1 TO S4
C08	B	TYPICAL CROSS SECTIONS	S5 TO S6
C09	B	TYPICAL CROSS SECTIONS	S7 TO S10
P01	B	BRIDGE GENERAL ARRANGEMENT	PLAN AND SECTION
P02	C	BRIDGE GENERAL ARRANGEMENT	ABUTMENT
P03	B	BRIDGE GENERAL ARRANGEMENT	PIER AND MIDSPAN ELEVATIONS

0 10 mm 50 100 200 300 mm

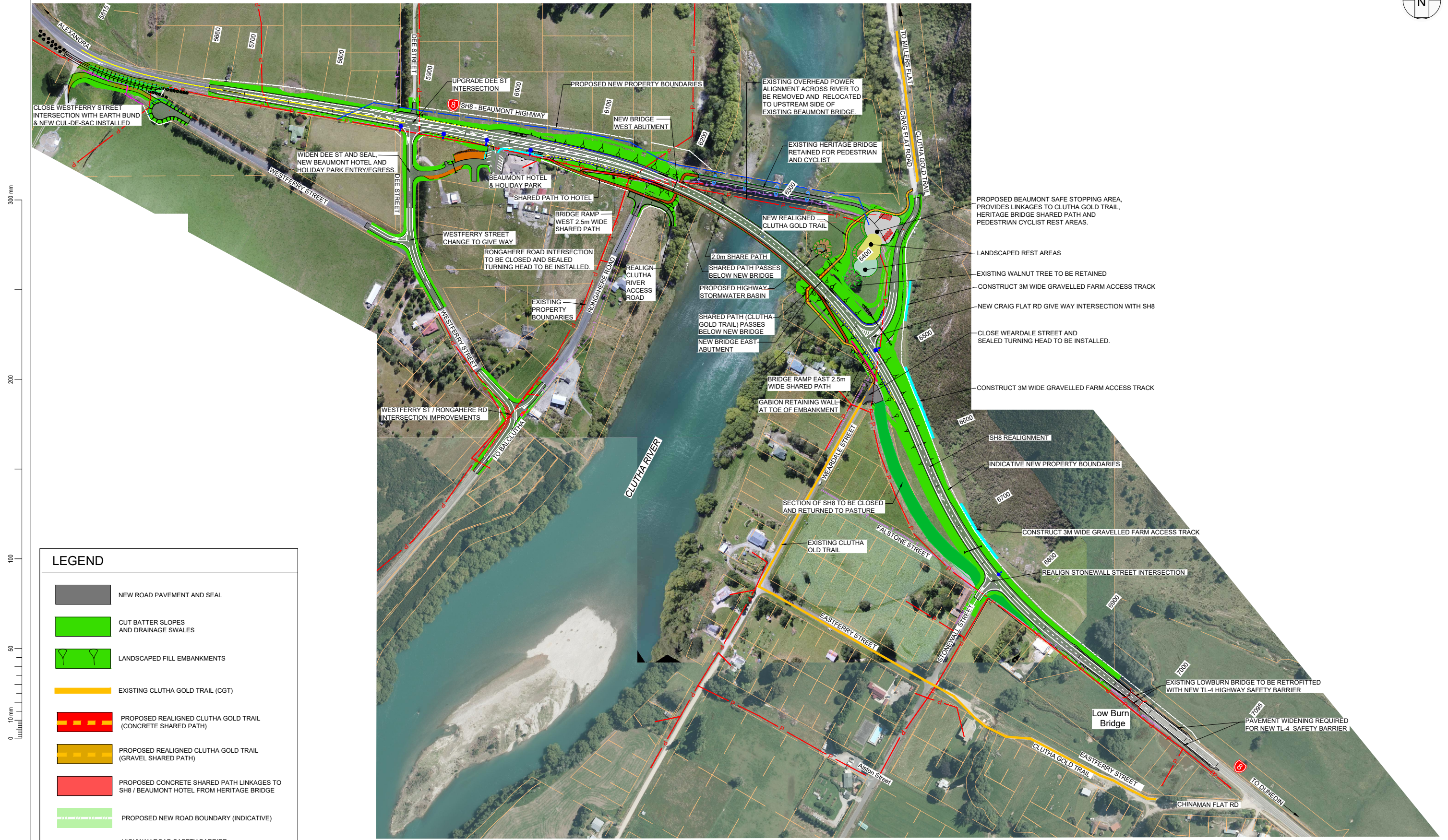
ISSUED FOR RMA APPROVALS

Revision	Amendment	Approved	Revision Date
A	ISSUED FOR RMA APPROVALS	MD	21/08/2019
B	REVISIONS UPDATED	MD	14/10/2019



wsp OPUS	
Alexandra Office +64 3 440 2400	
PO Box 273 Alexandra 9340 New Zealand	
Designed	Approved
B MULHOLLAND	M DAVIES
Drawn	Scales
B MULHOLLAND	N.A.

Project	
NZ TRANSPORT AGENCY SH8 BEAUMONT OTAGO RS 401 / 6300 NEW BEAUMONT BRIDGE	
Sheet	
SHEET INDEX CIVIL WORKS	
Project No.	Sheet No.
6-CT012.00	C01
Revision	
B	



300 mm
200
100
50
10 mm
0

LEGEND

- NEW ROAD PAVEMENT AND SEAL
- CUT BATTER SLOPES AND DRAINAGE SWALES
- LANDSCAPED FILL EMBANKMENTS
- EXISTING CLUTHA GOLD TRAIL (CGT)
- PROPOSED REALIGNED CLUTHA GOLD TRAIL (CONCRETE SHARED PATH)
- PROPOSED REALIGNED CLUTHA GOLD TRAIL (GRAVEL SHARED PATH)
- PROPOSED CONCRETE SHARED PATH LINKAGES TO SH8 / BEAUMONT HOTEL FROM HERITAGE BRIDGE
- PROPOSED NEW ROAD BOUNDARY (INDICATIVE)
- HIGHWAY ROAD SAFETY BARRIER
- LIGHTING COLUMN (NEW)
- PROPOSED OVERHEAD POWER REALIGNMENT ROUTE (INDICATIVE)
- EXISTING OVERHEAD POWER CABLES
- EXISTING CHORUS CABLES

Revision	Amendment	Approved	Revision Date
A	ISSUED FOR RMA APPROVALS	MD	21/08/2019
B	TITLEBLOCK UPDATED	MD	14/10/2019



wsp OPUS
 Alexandra Office
 +64 3 440 2400
 PO Box 273
 Alexandra 9340
 New Zealand

Project
 NZ TRANSPORT AGENCY
 SH8 BEAUMONT OTAGO RS 401 / 6300
 NEW BEAUMONT BRIDGE

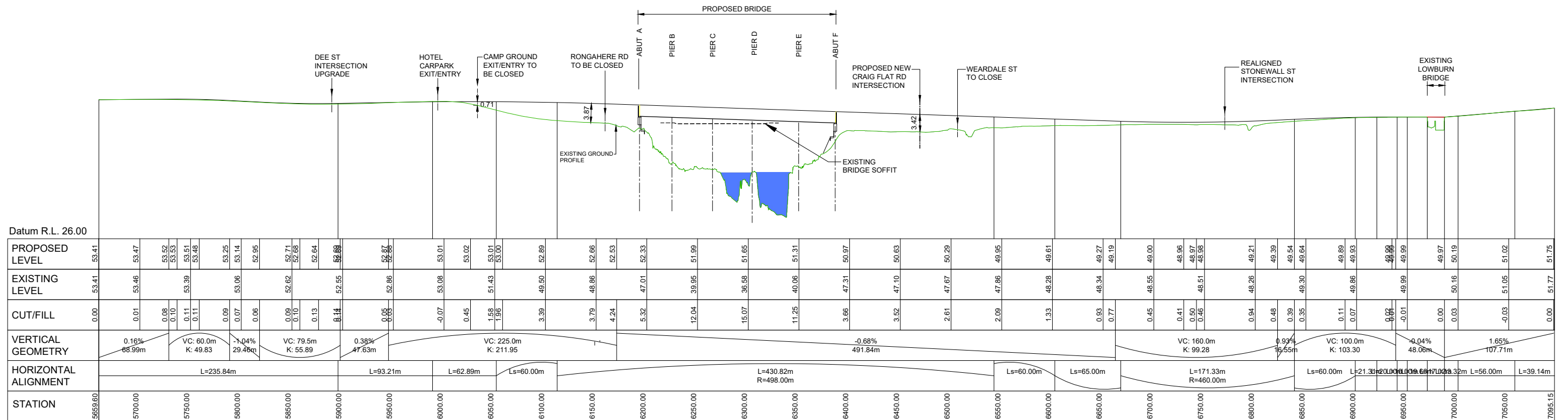
Sheet
OVERALL LAYOUT PLAN
 RP 5615 - 7100

DESIGNED	Approved	Approved Date
B MULHOLLAND	M DAVIES	14/10/2019
Drawn	Scales	Project No.
B MULHOLLAND	A1 1:2000 (A3 1:4000)	6-CT012.00

Sheet No.	Revision
C02	B

ISSUED FOR RMA APPROVALS

300 mm
200
100
50
0 10 mm



PROPOSED ROAD CENTRELINE LONGSECTION

ISSUED FOR RMA APPROVALS

Revision	Amendment	Approved	Revision Date
A	ISSUED FOR RMA APPROVALS	MD	21/08/2019
B	ADDED RIVER HATCH	MD	14/10/2019



WSP | OPUS

Alexandra Office
+64 3 440 2400

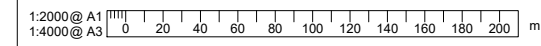
PO Box 273
Alexandra 9340
New Zealand

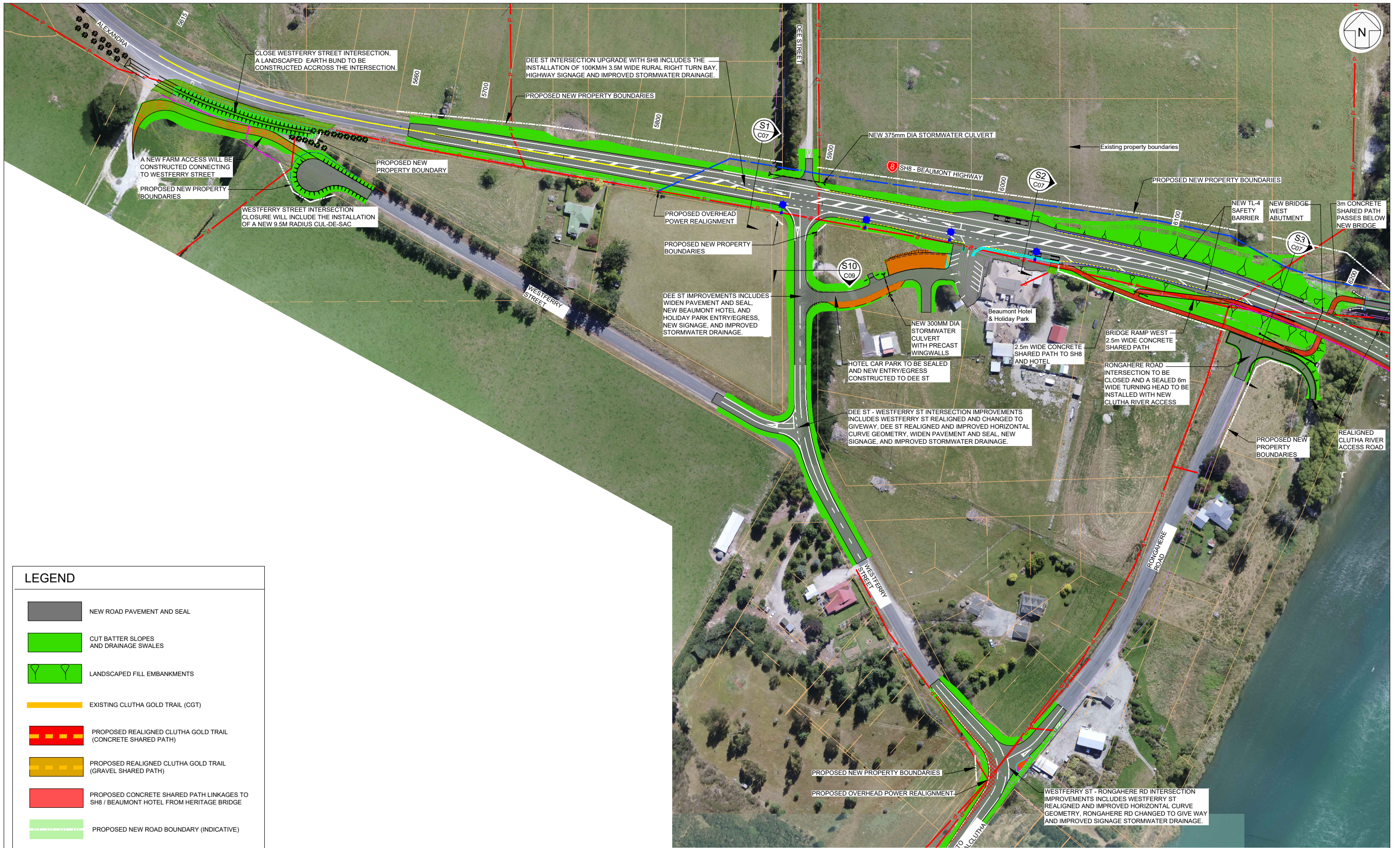
Designed	Approved	Approved Date
B MULHOLLAND	M DAVIES	14/10/2019
Drawn	Scales	Project No.
B MULHOLLAND	Hz: A1 1:2000 (A3 1:4000) Vt: A1 1:400	6-CT012.00

Project
NZ TRANSPORT AGENCY
SH8 BEAUMONT OTAGO RS 401 / 6300
NEW BEAUMONT BRIDGE

Sheet
PROPOSED SH8 CENTRELINE LONGITUDINAL SECTION
RP 5659 - 7095

Sheet No.	Revision
C03	B





300 mm
200
100
0 10 mm

LEGEND

- NEW ROAD PAVEMENT AND SEAL
- CUT BATTER SLOPES AND DRAINAGE SWALES
- LANDSCAPED FILL EMBANKMENTS
- EXISTING CLUTHA GOLD TRAIL (CGT)
- PROPOSED REALIGNED CLUTHA GOLD TRAIL (CONCRETE SHARED PATH)
- PROPOSED REALIGNED CLUTHA GOLD TRAIL (GRAVEL SHARED PATH)
- PROPOSED CONCRETE SHARED PATH LINKAGES TO SH8 / BEAUMONT HOTEL FROM HERITAGE BRIDGE
- PROPOSED NEW ROAD BOUNDARY (INDICATIVE)
- HIGHWAY ROAD SAFETY BARRIER
- LIGHTING COLUMN (NEW)
- PROPOSED OVERHEAD POWER REALIGNMENT ROUTE (INDICATIVE)
- EXISTING OVERHEAD POWER CABLES
- EXISTING CHORUS CABLES

Revision	Amendment	Approved	Revision Date
A	ISSUED FOR RMA APPROVALS	MD	21/08/2019
B	TITLEBLOCK UPDATED	MD	14/10/2019



wsp OPUS	
Alexandra Office +64 3 440 2400	PO Box 273 Alexandra 9340 New Zealand
Designed B MULHOLLAND	Approved M DAVIES
Drawn B MULHOLLAND	Approved Date 14/10/2019
Scales A1 1:1000 (A3 1:2000)	

Project NZ TRANSPORT AGENCY SH8 BEAUMONT OTAGO RS 401 / 6300 NEW BEAUMONT BRIDGE	
Sheet LAYOUT PLAN RP 5615 - 6200	
Project No. 6-CT012.00	Sheet No. C04
Revision B	

ISSUED FOR RMA APPROVALS



LEGEND

	NEW ROAD PAVEMENT AND SEAL
	CUT BATTER SLOPES AND DRAINAGE SWALES
	LANDSCAPED FILL EMBANKMENTS
	EXISTING CLUTHA GOLD TRAIL (CGT)
	PROPOSED REALIGNED CLUTHA GOLD TRAIL (CONCRETE SHARED PATH)
	PROPOSED REALIGNED CLUTHA GOLD TRAIL (GRAVEL SHARED PATH)
	PROPOSED CONCRETE SHARED PATH LINKAGES TO SH8 / BEAUMONT HOTEL FROM HERITAGE BRIDGE
	PROPOSED NEW ROAD BOUNDARY (INDICATIVE)
	HIGHWAY ROAD SAFETY BARRIER
	LIGHTING COLUMN (NEW)
	PROPOSED OVERHEAD POWER REALIGNMENT ROUTE (INDICATIVE)
	EXISTING OVERHEAD POWER CABLES
	EXISTING CHORUS CABLES

Revision	Amendment	Approved	Revision Date
A	ISSUED FOR RMA APPROVALS	MD	21/08/2019
B	TITLEBLOCK UPDATED	MD	14/10/2019



wsp OPUS	
Alexandra Office +64 3 440 2400	PO Box 273 Alexandra 9340 New Zealand
Designed B MULHOLLAND	Approved M DAVIES
Drawn B MULHOLLAND	Approved Date 14/10/2019
Scales A1 1:1000 (A3 1:2000)	

Project NZ TRANSPORT AGENCY SH8 BEAUMONT OTAGO RS 401 / 6300 NEW BEAUMONT BRIDGE	
Sheet LAYOUT PLAN RP 6200 - 6600	
Project No. 6-CT012.00	Sheet No. C05
Revision B	

ISSUED FOR RMA APPROVALS

300 mm
200
100
50
10 mm
0



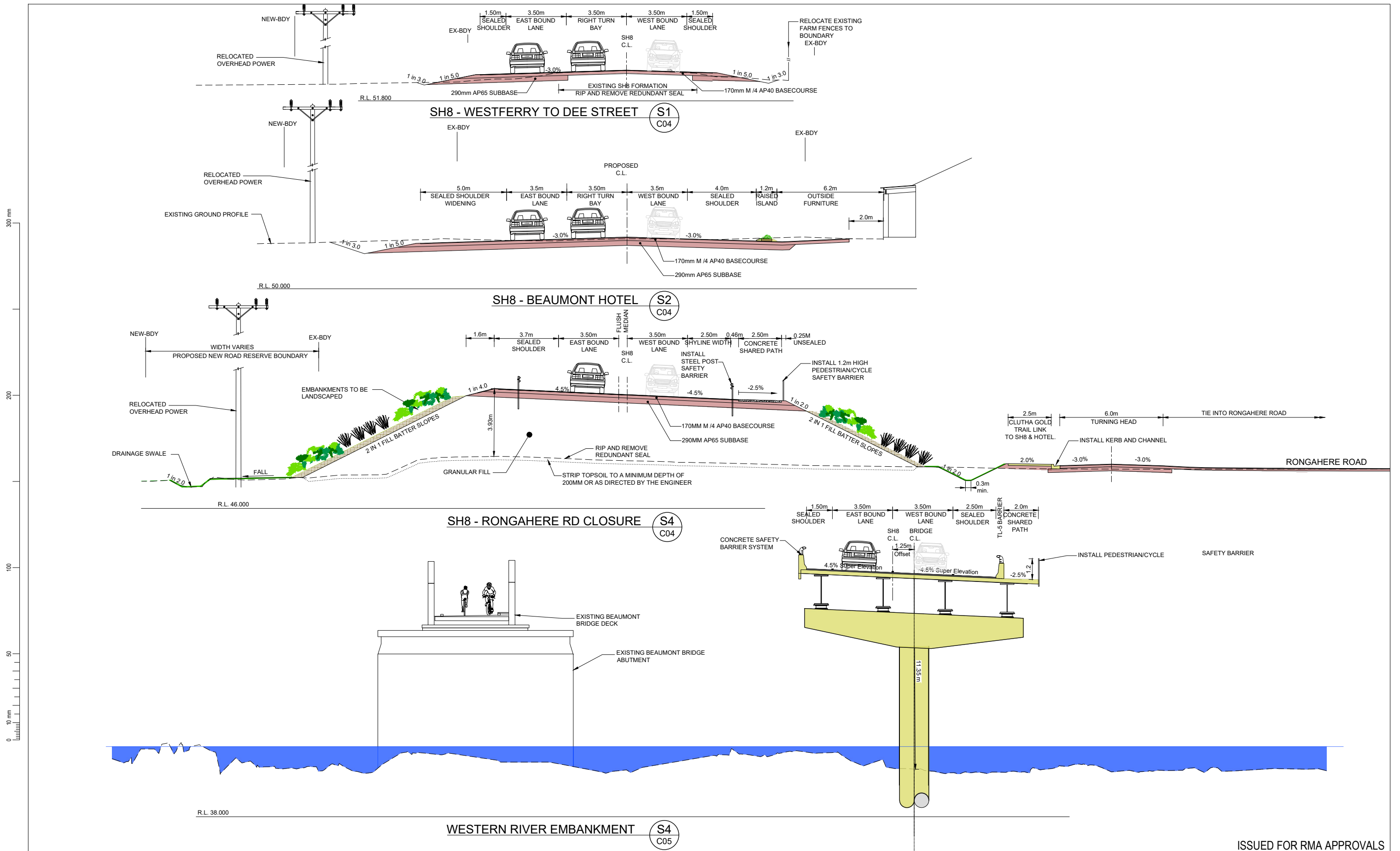
LEGEND

- NEW ROAD PAVEMENT AND SEAL
- CUT BATTER SLOPES AND DRAINAGE SWALES
- LANDSCAPED FILL EMBANKMENTS
- EXISTING CLUTHA GOLD TRAIL (CGT)
- PROPOSED REALIGNED CLUTHA GOLD TRAIL (CONCRETE SHARED PATH)
- PROPOSED REALIGNED CLUTHA GOLD TRAIL (GRAVEL SHARED PATH)
- PROPOSED CONCRETE SHARED PATH LINKAGES TO SH8 / BEAUMONT HOTEL FROM HERITAGE BRIDGE
- PROPOSED NEW ROAD BOUNDARY (INDICATIVE)
- HIGHWAY ROAD SAFETY BARRIER
- LIGHTING COLUMN (NEW)
- PROPOSED OVERHEAD POWER REALIGNMENT ROUTE (INDICATIVE)
- EXISTING OVERHEAD POWER CABLES
- EXISTING CHORUS CABLES

ISSUED FOR RMA APPROVALS

Revision	Amendment	Approved	Revision Date
A	ISSUED FOR RMA APPROVALS	MD	21/08/2019
B	TITLEBLOCK UPDATED	MD	14/10/2019

 NZ TRANSPORT AGENCY <small>WAKA KOTAHU</small>		Project NZ TRANSPORT AGENCY SH8 BEAUMONT OTAGO RS 401 / 6300 NEW BEAUMONT BRIDGE	
	Alexandra Office +64 3 440 2400	PO Box 273 Alexandra 9340 New Zealand	Approved Date 14/10/2019
Designed B MULHOLLAND	Approved M DAVIES	Project No. 6-CT012.00	Sheet No. C06
Drawn B MULHOLLAND	Scales A1 1:1000 (A3 1:2000)	Revision B	Revision B



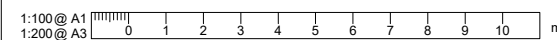
ISSUED FOR RMA APPROVALS

Revision	Amendment	Approved	Revision Date
A	ISSUED FOR RMA APPROVALS	MD	21/08/2019
B	TITLEBLOCK UPDATED	MD	14/10/2019

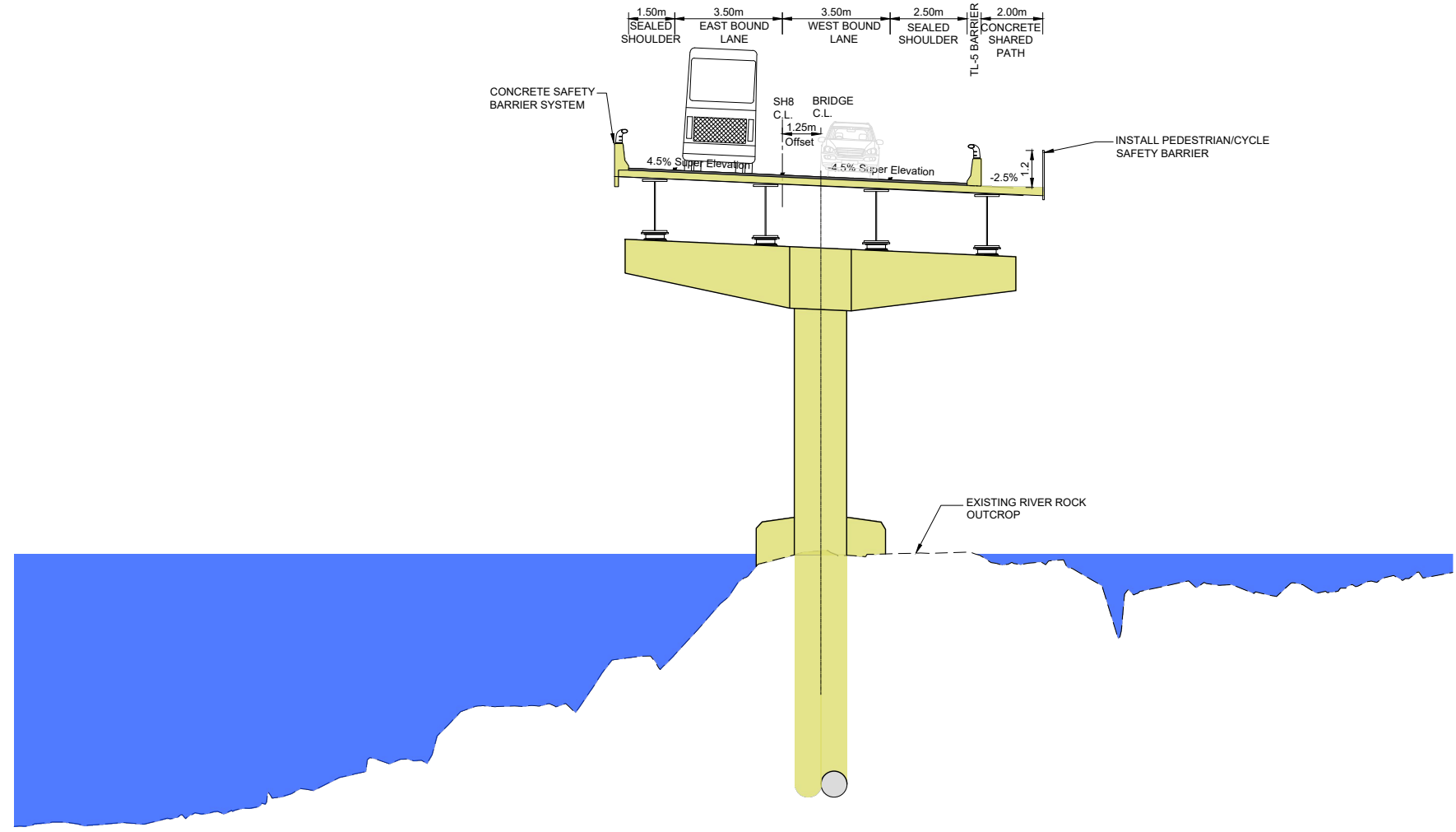


wsp OPUS	
Alexandra Office +64 3 440 2400	PO Box 273 Alexandra 9340 New Zealand
Designed B MULHOLLAND	Approved M DAVIES
Drawn B MULHOLLAND	Approved Date 14/10/2019
Scale A1 1:100 (A3 1:200)	Project No. 6-CT012.00

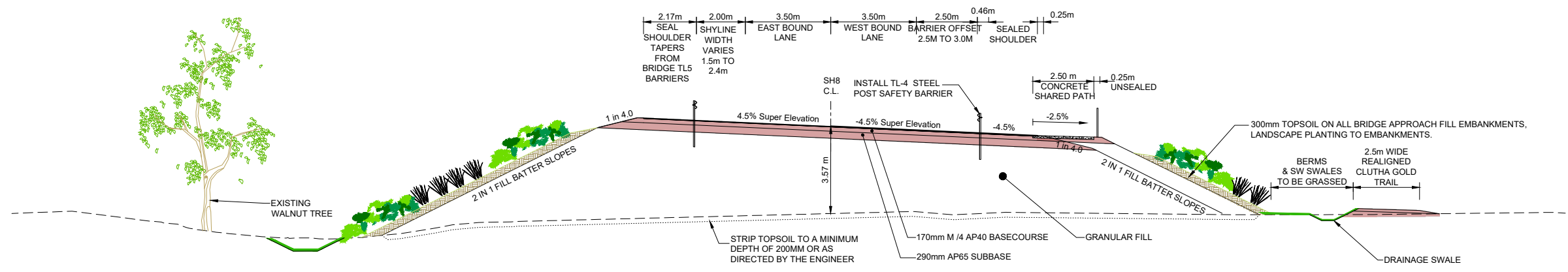
Project NZ TRANSPORT AGENCY SH8 BEAUMONT OTAGO RS 401 / 6300 NEW BEAUMONT BRIDGE	
Sheet TYPICAL CROSS SECTIONS - S1 TO S4	
Project No. 6-CT012.00	Sheet No. C07
Revision B	



300 mm
200
100
50
10 mm
0



CLUTHA RIVER ROCK OUTCROP PIER LOCATION (S5 C05)



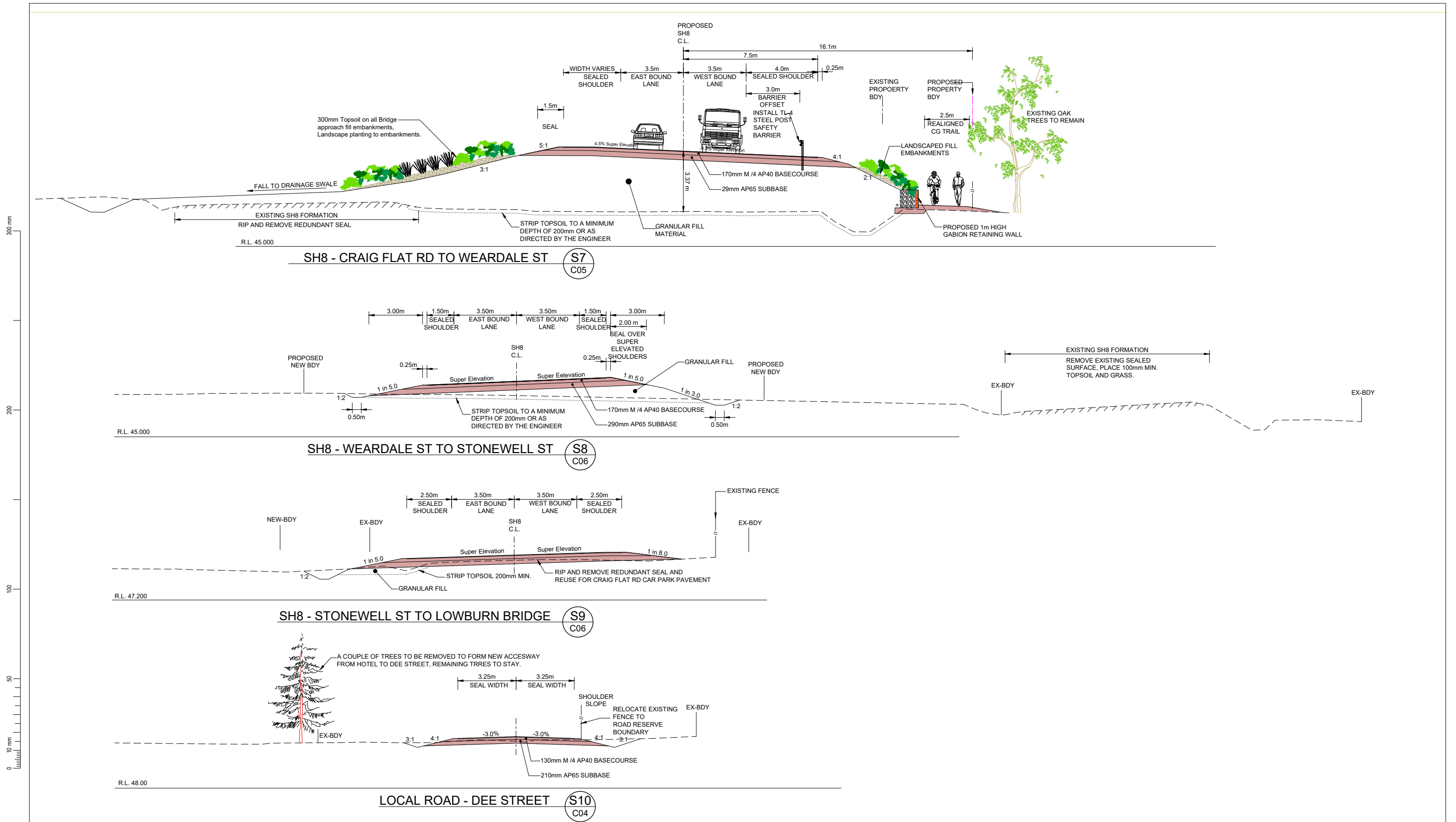
SH8 - BETWEEN EASTERN ABUTMENT AND CRAIG FLAT ROAD (S6 C05)

ISSUED FOR RMA APPROVALS

Revision	Amendment	Approved	Revision Date
A	ISSUED FOR RMA APPROVALS	MD	21/08/2019
B	TITLEBLOCK UPDATED	MD	14/10/2019

				Project NZ TRANSPORT AGENCY SH8 BEAUMONT OTAGO RS 401 / 6300 NEW BEAUMONT BRIDGE	
		Alexandra Office +64 3 440 2400		PO Box 273 Alexandra 9340 New Zealand	
Designed	Approved	Approved Date		Sheet	
B MULHOLLAND	M DAVIES	14/10/2019		TYPICAL CROSS SECTIONS - S5 TO S6	
Drawn	Scales	Project No.		Sheet No.	Revision
B MULHOLLAND	A1 1:100 (A3 1:200)	6-CT012.00		C08	B

1:100 @ A1
1:200 @ A3



ISSUED FOR RMA APPROVALS

Revision	Amendment	Approved	Revision Date
A	ISSUED FOR RMA APPROVALS	MD	21/08/2019
B	TITLEBLOCK UPDATED	MD	14/10/2019



wsp | OPUS

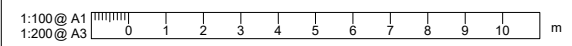
Alexandra Office
+64 3 440 2400

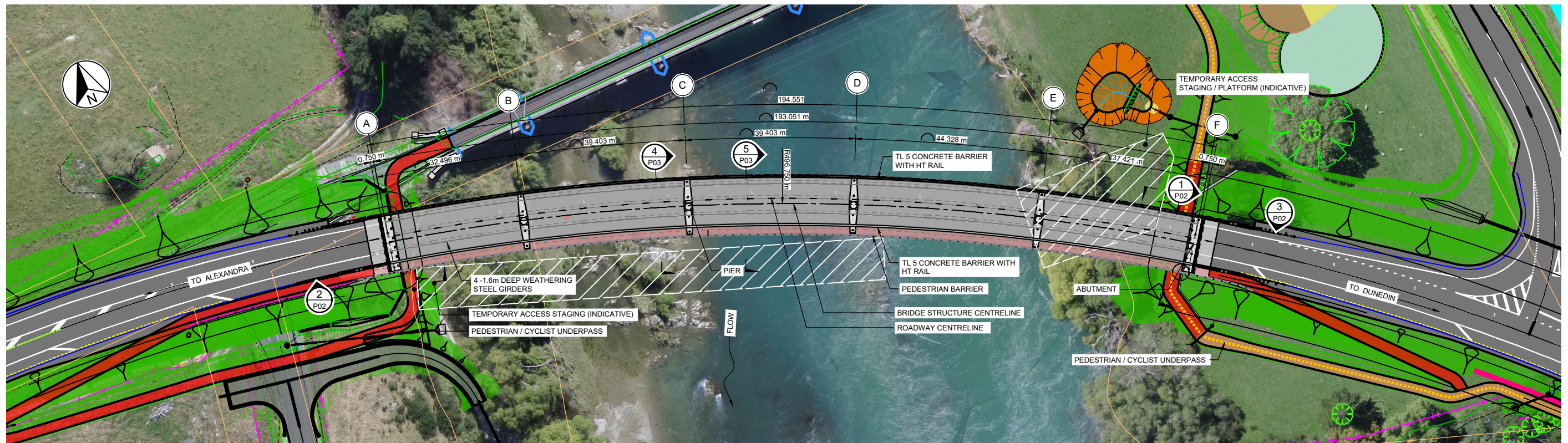
PO Box 273
Alexandra 9340
New Zealand

Designed: B MULHOLLAND
Approved: M DAVIES
Approved Date: 14/10/2019

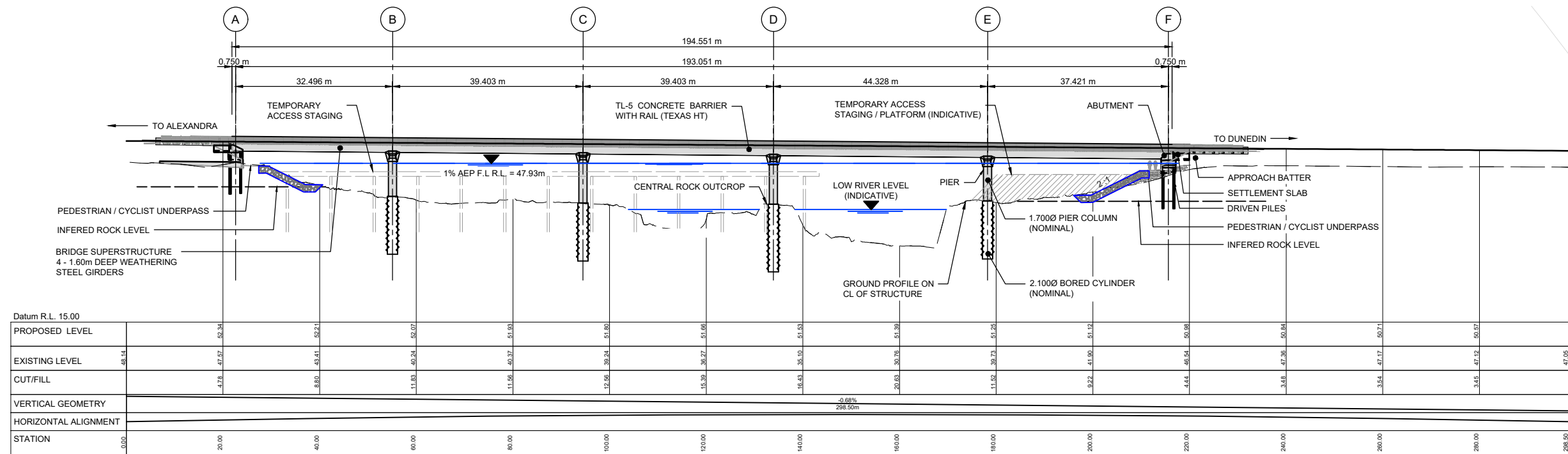
Drawn: B MULHOLLAND
Scales: A1 1:100 (A3 1:200)

Project		NZ TRANSPORT AGENCY SH8 BEAUMONT OTAGO RS 401 / 6300 NEW BEAUMONT BRIDGE	
Sheet		TYPICAL CROSS SECTIONS - S7 TO S10	
Project No.	6-CT012.00	Sheet No.	C09
Revision	B		





LAYOUT PLAN
SCALE: 1:500 (DIMENSIONS ON BRIDGE CL)



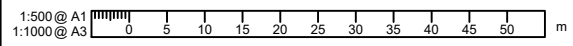
DOWN STREAM ELEVATION (DIMENSIONS ON BRIDGE CL)
SCALE: 1:500

ISSUED FOR RMA APPROVALS

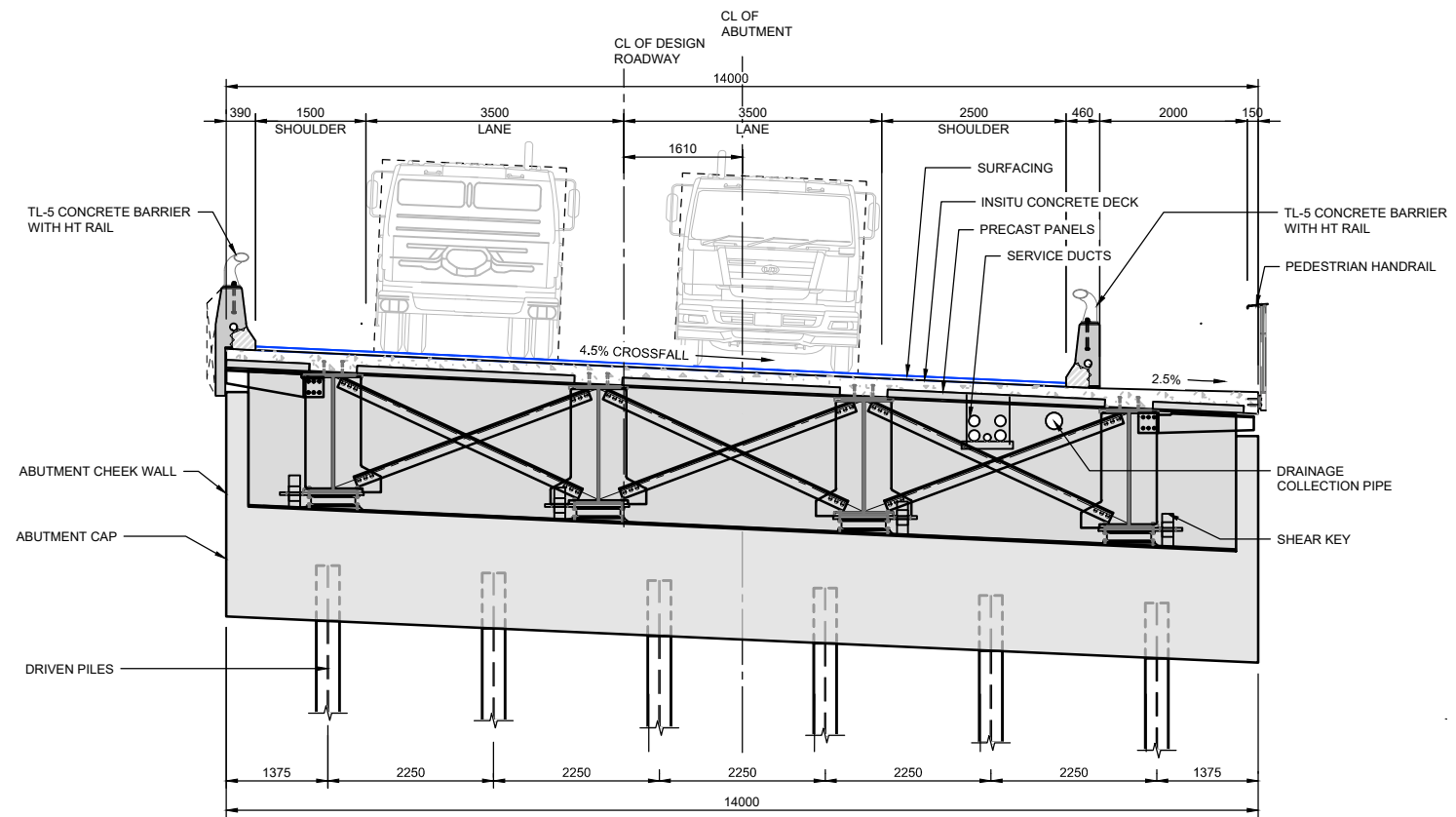
Revision	Amendment	Approved	Revision Date
A	STRUCTURAL OPTIONS REPORT	M.D.	04 19
B	ISSUED FOR RMA APPROVALS	M.D.	08/19



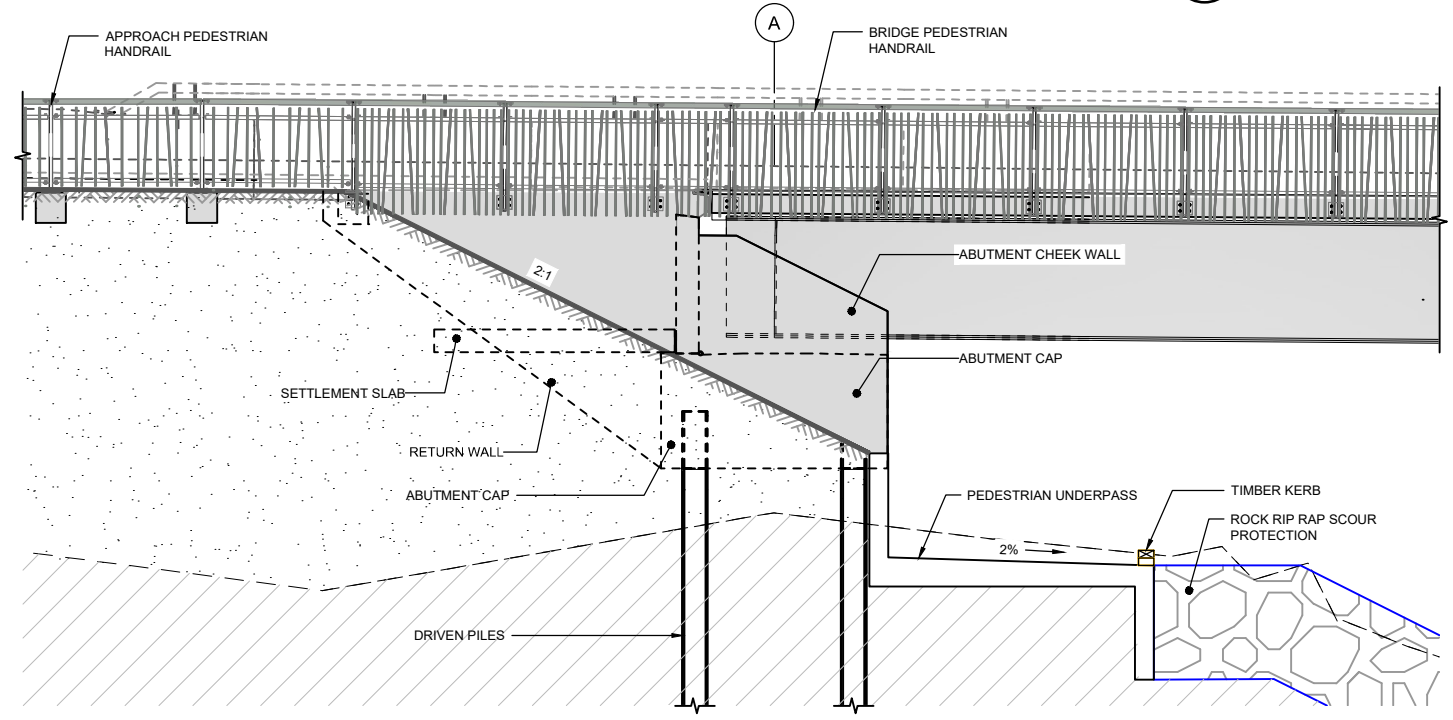
wsp OPUS		Project	
Christchurch Office +64 3 363 5400		NZ TRANSPORT AGENCY BEAUMONT, OTAGO SH8 BEAUMONT BRIDGE REPLACEMENT	
Designed	Approved	Approved Date	
J.JENNINGS	M. DAVIES	08/19	
Drawn	Scales	Project No.	
P. JANSSENS	AS SHOWN	6-CT012.00	
		Sheet No.	Revision
		P01	B



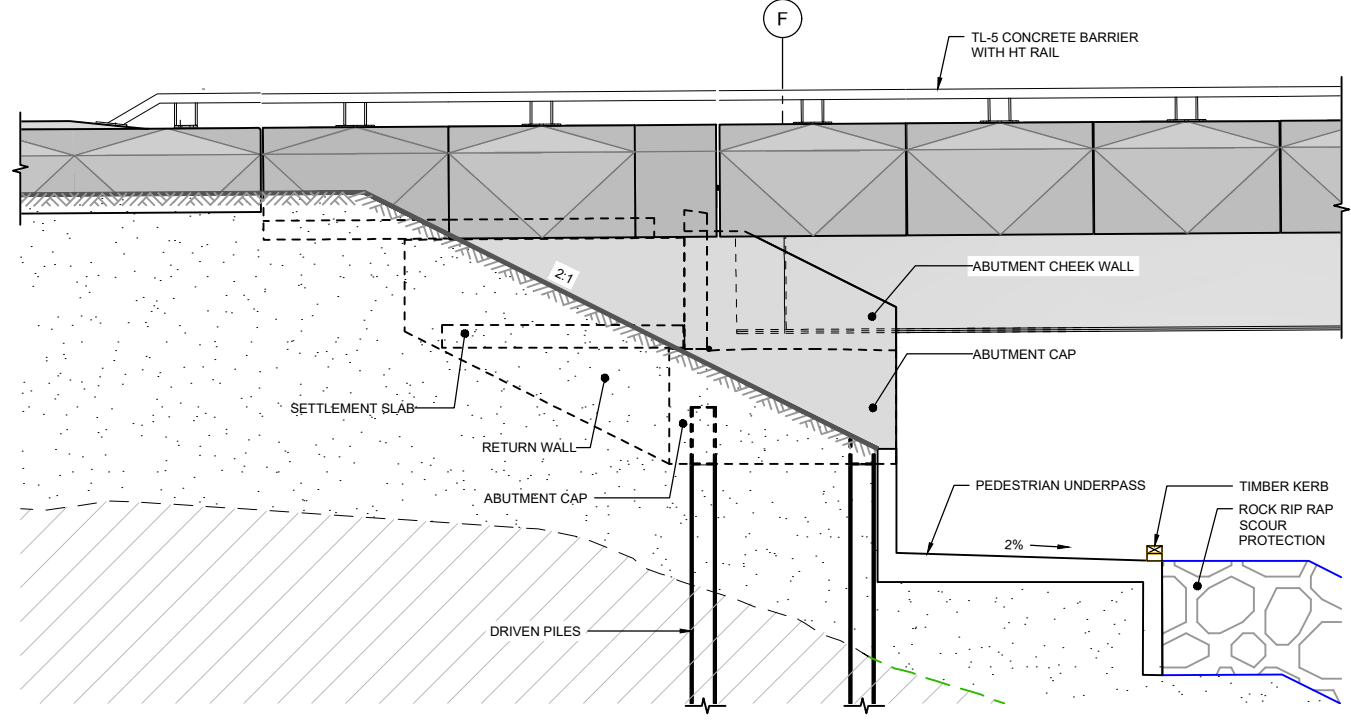
NOTE:
BARRIER AND HANDRAIL ARCHITECTURAL
DESIGN INDICATIVE AND SUBJECT TO CHANGE



1 ABUTMENT F ELEVATION
P01 SCALE: 1:50 (UNDERPASS NOT SHOWN)



2 ABUTMENT A END VIEW
SCALE: 1:50 (DOWNSTREAM)



3 ABUTMENT F END VIEW
P02 SCALE: 1:50

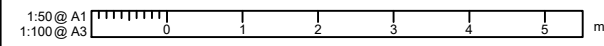
ISSUED FOR RMA APPROVALS

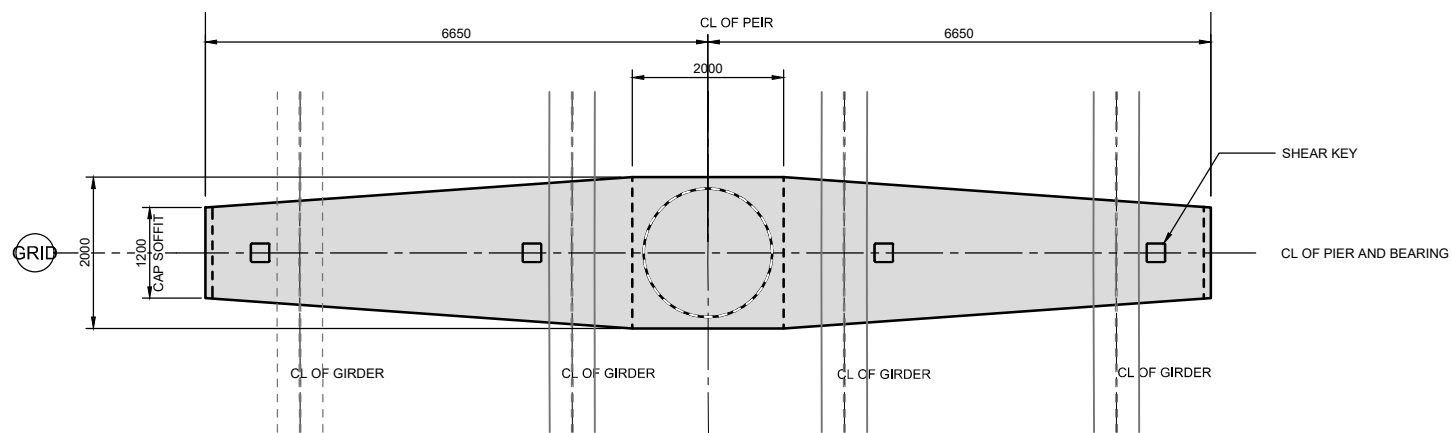
Revision	Amendment	Approved	Revision Date
A	STRUCTURAL OPTIONS REPORT	M.D.	04/19
B	ISSUED FOR RMA APPROVALS	M.D.	08/19
C	NOTE ADDED	M.D.	10/19



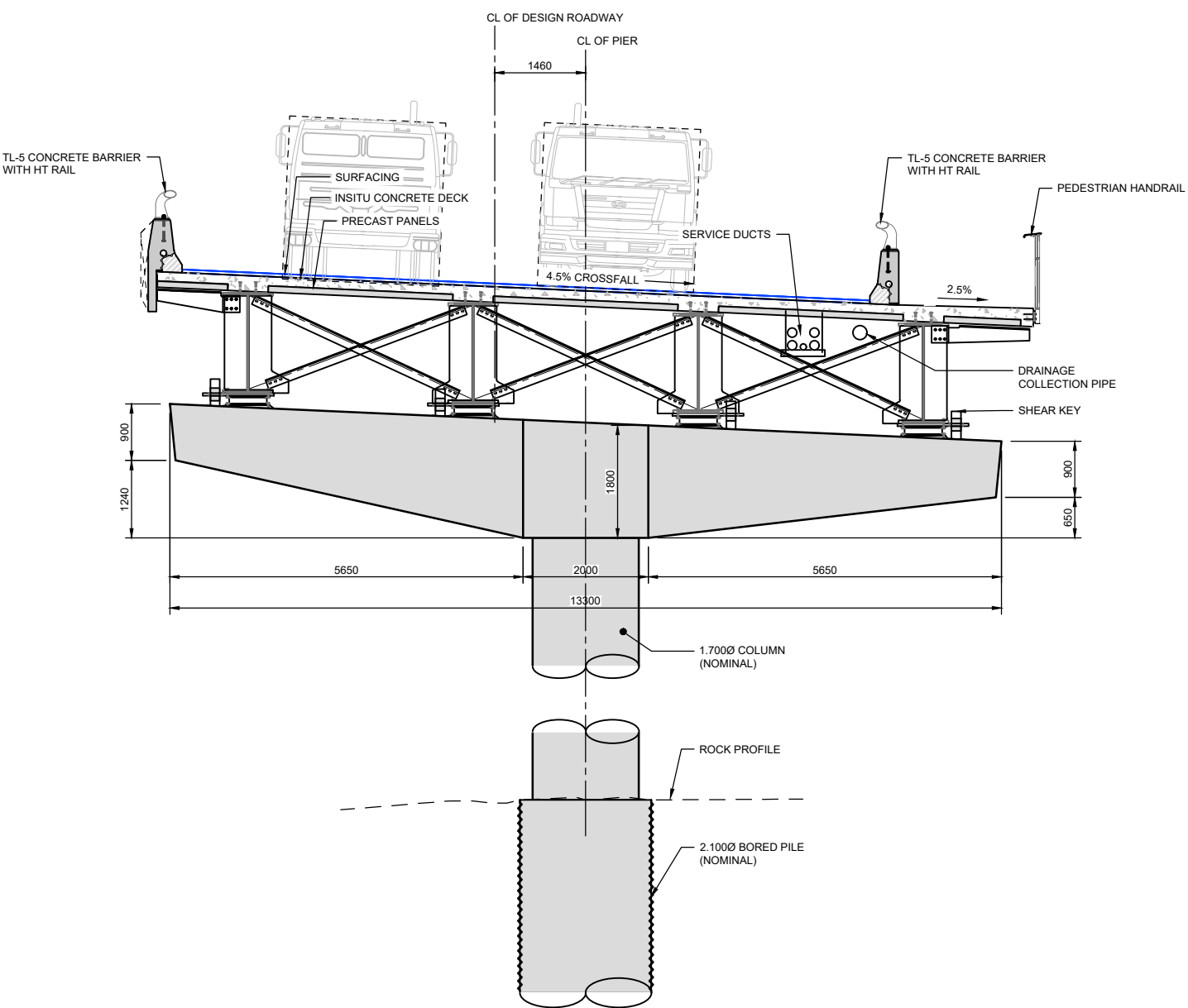
WSP OPUS		Project
Christchurch Office +64 3 363 5400	PO Box 1482 Christchurch 8140 New Zealand	NZ TRANSPORT AGENCY BEAUMONT, OTAGO SH8 BEAUMONT BRIDGE REPLACEMENT
Designed J.JENNINGS	Approved M.DAVIES	Approved Date 08/19
Drawn P.JANSENS	Scales AS SHOWN	Project No. 6-CT012.00

Sheet		Sheet No.	Revision
GENERAL ARRANGEMENT ABUTMENT		P02	C

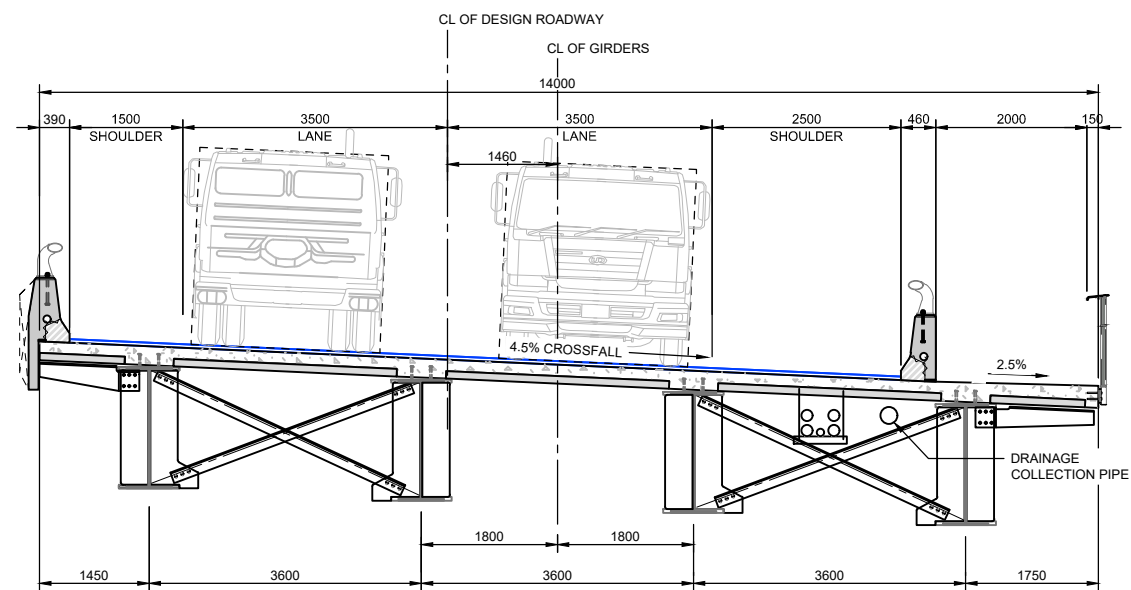




PIER PLAN
SCALE: 1:50 (SUPERSTRUCTURE NOT SHOWN)



4 PIER ELEVATION - TYPICAL
SCALE: 1:50



5 MID SPAN ELEVATION
SCALE: 1:50

ISSUED FOR RMA APPROVALS

Revision	Amendment	Approved	Revision Date
A	STRUCTURAL OPTIONS REPORT	M.D.	04/19
B	ISSUED FOR RMA APPROVALS	M.D.	08/19



WSP | OPUS
Christchurch Office
+64 3 363 5400
PO Box 1482
Christchurch 8140
New Zealand

Designed	Approved	Approved Date
J. JENNINGS	M. DAVIES	08/19
Drawn	Scales	
P. JANSSENS	AS SHOWN	

Project	
NZ TRANSPORT AGENCY BEAUMONT, OTAGO SH8 BEAUMONT BRIDGE REPLACEMENT	
Sheet	
GENERAL ARRANGEMENT PIER AND MID SPAN ELEVATIONS	
Project No.	6-CT012.00
Sheet No.	P03
Revision	B

1:50 @ A1
1:100 @ A3