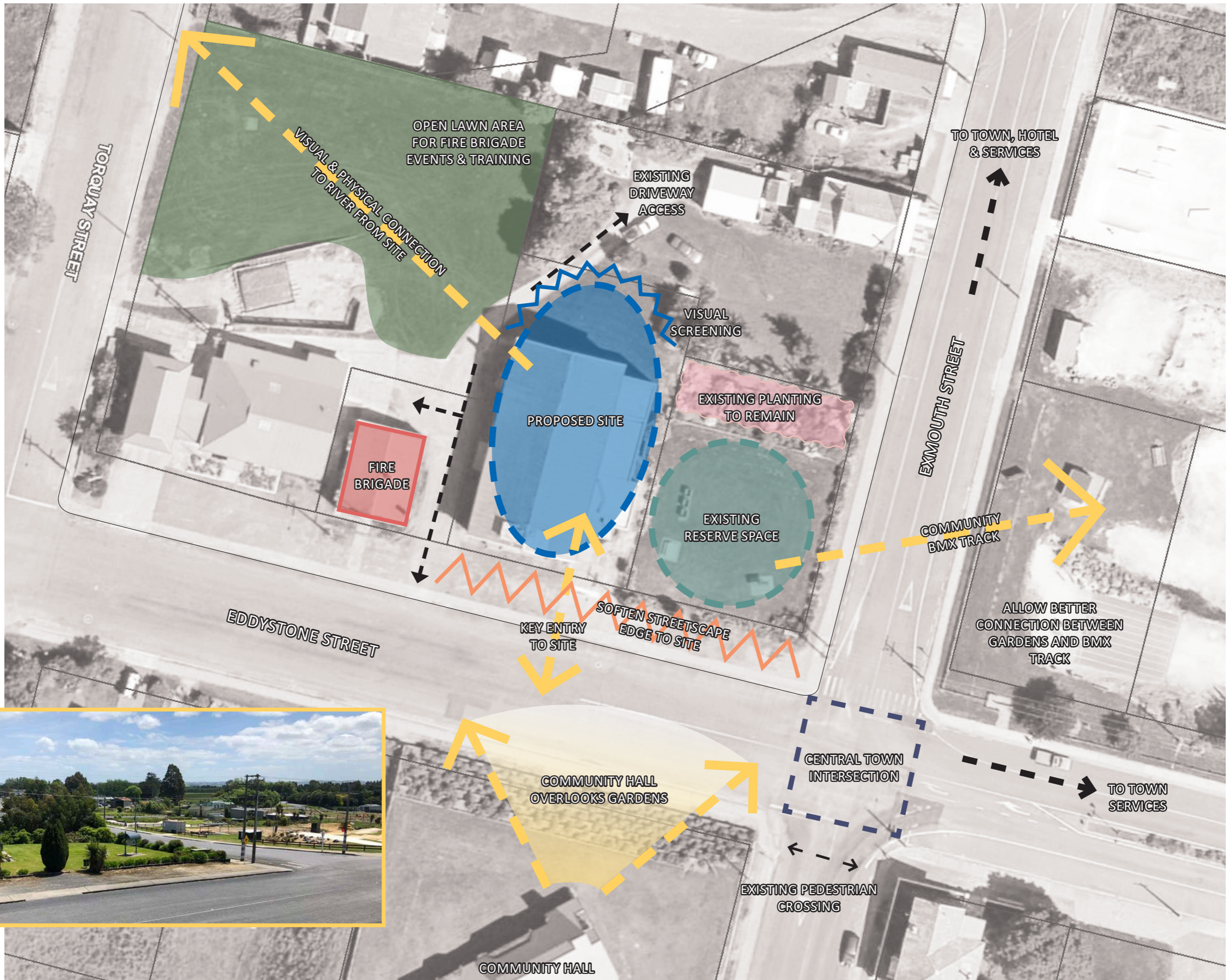


# KAITANGATA COMMUNITY GARDENS

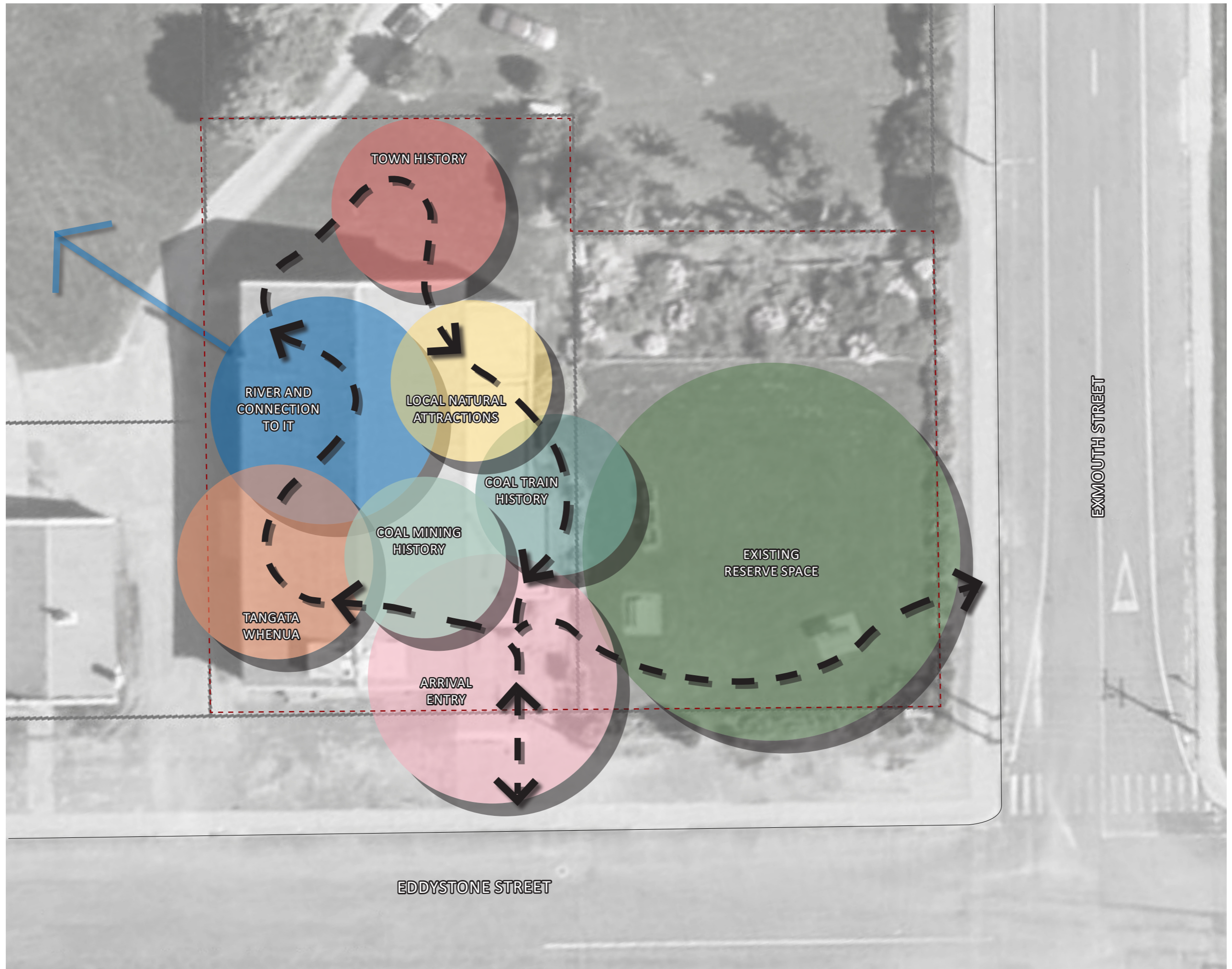
PRELIMINARY LANDSCAPE CONCEPT













ENTRY/ARRIVAL



TANGATA WHENUA



Pou on Rangitahi Bridge in Raglan.  
Image source: raglan.net.nz



Paving on the Otakaro/Avon River waterfront.  
Image source: rough and milne



Pita Te Hori Centre, Christchurch  
Image source: kamomارش.co.nz

COAL MINING TRAIN





## COAL MINING HISTORY



Kaitangata, Coal Co's Mine, 1880s, Dunedin  
By Burton Brothers studio. Te Papa (O.036645)



Castle Hill Coal Mine, Kaitangata, Dunedin  
By Burton Brothers studio. Te Papa (C.014085)

## TOWN HISTORY



4965 P. Kaitangata looking down River N. Z.  
Kaitangata looking down River, New Zealand, 1904-1915, Kaitangata, by Muir & Moodie studio. Purchased 1998 with New Zealand Lottery Grants Board funds. Te Papa (PS.001498)



4961 P. Eddyston St. Kaitangata N. Z.  
Eddyston Street, Kaitangata, New Zealand, 1904-1915, Kaitangata, by Muir & Moodie studio. Purchased 1998 with New Zealand Lottery Grants Board funds. Te Papa (PS.002423)

## EXISTING RESERVE





## RIVER AND CONNECTION



## LOCAL NATURAL ATTRACTIONS



## KAITANGATA TOWN CHARACTER

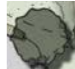








LEGEND

- ① Entry and info for the gardens
- ② History of coal and mining in the region on information board
- ③ Tangata Whenua information
- ④ River information including steamboats, floods and fishing
- ⑤ History of the town
- ⑥ Natural attractions of the region like the coast line
- ⑦ History of the train and the part it has played in Kaitangata life
- ⑧ Public toilets
- ⑨ Repurposed train as play elements

-  Existing trees
-  Proposed trees
-  Proposed garden bed

SCALE 1:250 @ A3

