

Evacuation

If you discover a fire, trigger the nearest call point (located by emergency exit doors)

Exit the facility immediately, All emergency exits are lit

Calmly make your way to the designated assembly point at the front of the building, and stay there

Do not re enter the building until the all clear is given by emergency services as well as pool staff.

Earthquake

Swimmers should move to the centre of the pool

Spectators: Stop, Cover, Hold.

Accident/ Medical

A **First aid kit** and **Defibrillator** are located in the **Reception area**

Take steps to prevent further injury

Immediately alert pool staff.

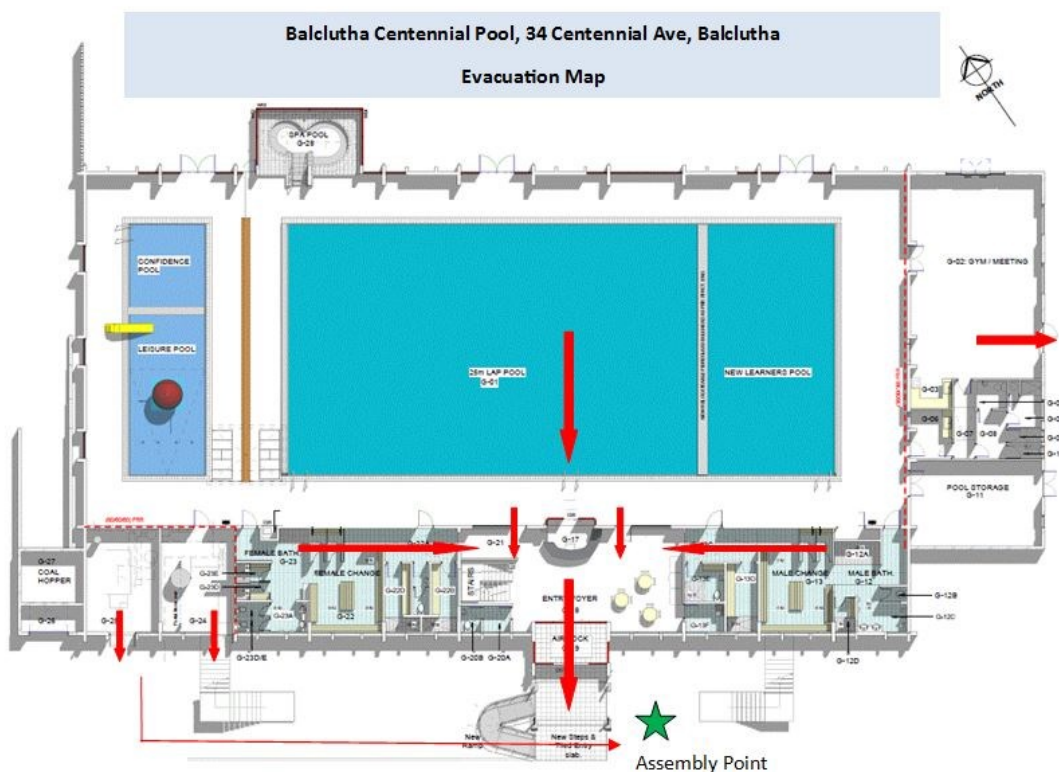
Meeting Room Only Hire Outside of Facility Operating Hours

Please be aware that there is no access to a phone or first aid supplies, please supply your own.

If the fire alarm sounds please evacuate to the front of the building, the fire alarm is connected to the Fire Service and they will arrive automatically.

Do not re enter the building until the fire service gives the all clear.

Contact Holly the Aquatic Services Team Leader on 027 293 5620 as soon as practicable.



Evacuation

If you discover a fire, trigger the nearest call point (located by emergency exit doors)

Exit the facility immediately, All emergency exits are lit

Calmly make your way to the designated assembly point at the front of the building, near the entrance gate and stay there

Do not re enter the building until the all clear is given by emergency services as well as pool staff.

Earthquake

Swimmers should move to the centre of the pool

Spectators: Stop, Cover, Hold.

Accident/ Medical

A **First aid kit** is located in the **reception area**

Take steps to prevent further injury

Immediately alert pool staff.

