



CONSULTATION DOCUMENT

SPEED MANAGEMENT

AROUND OUR SCHOOLS

Have your say on safer speeds for Clutha Districts roads!

Your voice matters! We're excited to share the draft Speed Management Plan for the Clutha District with you and we encourage your valuable feedback. Your input is crucial in shaping the future of our road network, making it safer and more efficient for everyone.

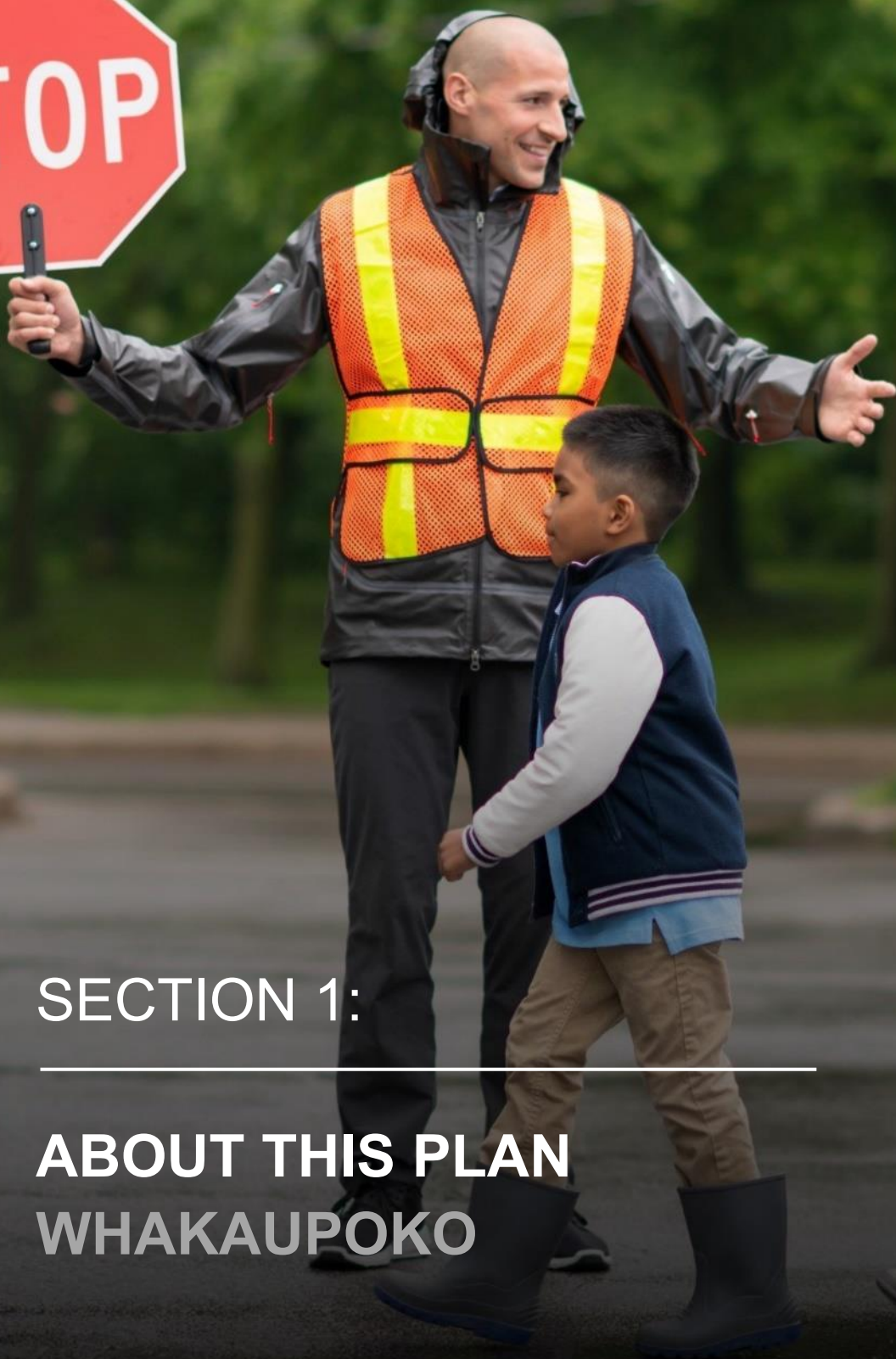
We've taken special care in outlining proposed changes for the streets around schools, in urban towns, in rural towns and on our rural roads. Now, we want to hear your thoughts on these plans. Your feedback on the proposed speed limits will play a key role in finalising the best solutions for our district.

But that's not all – we're open to your innovative ideas! If you believe there are other improvements we should consider to complement our current proposal, we're all ears. Your suggestions will help us enhance this plan and pave the way for even better Speed Management Plans in the future.

So, let's work together to create a safer and more connected Clutha District. Share your thoughts and be a part of shaping a brighter future for our roads.

To have your say:

- Visit cluthadc.govt.nz/speed-management-plan to complete an online survey or download a copy.
- Email us at speedmanagementplan@cluthadc.govt.nz
- Visit any of our libraries or service centres to find a hard copy survey to complete.
- Completed surveys can be left in a drop box at any of our service centres.



SECTION 1:

**ABOUT THIS PLAN
WHAKAUPOKO**

INTRODUCTION

We want everyone who calls Clutha District home and visitors who pass through to be safe when using our streets and roads. That means we need the right speeds on the right roads for all road users, whether you are walking to the shops, biking to school, driving to work or making deliveries.

Recognizing speed management as a crucial factor in nationwide road safety, the government has prioritized it as a key initiative. The Clutha District Council holds the responsibility of establishing safe and appropriate speed limits on the roads under our jurisdiction. In collaboration with Waka Kotahi (the New Zealand Transport Agency), we are in the process of developing a comprehensive Speed Management Plan for the roads in our District.

We have drawn upon insights from experts such as consultants and road safety specialists, as well as feedback from our community, we have shaped the approach outlined in this document. Now, we seek your input—the individuals who possess the firsthand knowledge of our roads—regarding our proposed speed limit changes and their potential impact on you.

SPEED MANAGEMENT IS KEY

We have a mix of road types across our District. Some are windy and hilly, others flat and straight. We also have many different road users including pedestrians, people with disabilities, cyclists, horses, tourists, cars, campervans, boats (being towed), agricultural vehicles, and heavy vehicles.

A review of data from 2003-2023 shows that on Clutha District roads (excluding State Highways) there have been 271 crashes resulting in fatal and serious injuries to people. Speed has been a contributing factor in the crash occurring in 25% of these incidents.

Regardless of what causes an accident, we know higher speeds lead to more crashes and a greater chance of injury or death. A small change in speed makes a big difference, especially when cyclists or pedestrians are involved. In a crash, speed is the number one factor in determining your chance of survival or likelihood of serious injury.

THE WAY WE CURRENTLY MANAGE VEHICLE SPEED

We consistently evaluate and assess the physical characteristics of our streets and roads to ensure the safety of all road users. When establishing and revising speed limits, a variety of factors come into play:

- Traffic volumes and the diverse range of road users, encompassing pedestrians, cyclists, tourists, and trucks.
- Analysis of historical crash data.
 - Examination of road and roadside features, including:
 - Surrounding infrastructure (e.g., residential areas, schools, playgrounds, retirement homes, tourist attractions).
 - On-road elements (e.g., footpaths, cycle lanes, power poles, trees, barriers, berms, ditches, gullies, cliffs).
 - Road characteristics (e.g., road width, surface conditions, types of corners, visibility, intersections, pedestrian crossings, and the presence of barriers).
- Consideration of community concerns, taking into account the insights of regular road users who observe the road's usage, potential risks, and near misses.
- Determination of an appropriate speed for ensuring the efficient movement of people and goods on the road.

WHEN ARE THE SPEED LIMIT CHANGES HAPPENING?

Changes will not be made until consultation has concluded, a final Speed Management Plan is completed, adopted by council and signed off on by Waka Kotahi (we are expecting this to happen in 2024)

Once the Speed Management Plan has been adopted, we will be prioritising the changes we need to make. The changes we are looking to make will focus on roads outside schools and key roads where there are a lot of people and high numbers of vehicles. We will begin to implement these changes later in 2024.

We are not looking to change speeds on state highways. This is because state highways are outside the responsibility of the council. They are set and managed by Waka Kotahi. If you have concerns with speed limits on state highways in our District, please raise these with us - we work closely with Waka Kotahi and will pass your feedback on.

OUR APPROACH

We will use your feedback, resources, advice from Waka Kotahi and road safety experts to guide our approach in setting new speed limits.

The 2027 – 2027 Draft Speed management Plan is made up of four documents:

- 1. Around Our Schools Speed Management Plan** concentrates on ensuring the safety of our school zones and our tamariki. We have carefully identified the required changes in these areas to safeguard tamariki. This phase will pave the way for future improvements throughout the district.
- 2. In Our Urban Towns Speed Management Plan** concentrates on ensuring safe and efficient travel in our urban centres.
- 3. In Our Rural Towns Speed Management Plan** concentrates on ensuring safe and efficient travel in our rural towns.
- 4. On Our Rural Roads Speed Management Plan** concentrates on ensuring safe and efficient travel on our district's rural roads.

When the consultation period concludes, these four documents will constitute the Clutha District's speed management plan. This plan will undergo a review every three years to ensure that road speeds remain safe and appropriate

Once the Speed Management Plan has been adopted, we will be prioritising the changes we need to make. The changes we are looking to make will focus on roads outside schools and key roads where there are a lot of people and high numbers of vehicles. We will begin to implement these changes later in 2024.

The Draft Speed Management Plan 2024 – 2027 – Around Our Schools, proposes 2 key changes to speed management:

1. 30km/h permanent speed limit for roads within Category 1 school zones
2. 60km/h permanent speed limit for roads within Category 2 school zones

While we are proposing a permanent 30km/h speed limit for Category 1 schools, there is also an option to use variable speed limits. Let us know what you would prefer to see in the feedback!.

Please read on, let us know your thoughts and make a submission by **15th December 2023**



SECTION 2:

SAFER SPEEDS – AROUND OUR SCHOOLS
ROHE TERE HAUMARU - KURA

Balclutha Ward

Balclutha Primary School

Balclutha Primary School is a Year 1-8 primary school with a proud history of providing quality education for the students of Balclutha and South Otago for over 150 years.

Balclutha Primary school has a current role of 190 students. There are 50 students who walk to school each day and 15 that cycle. The remaining students are either dopped off at school by car or bus.

The school has playground area comprised of several playing areas, a large turf area, grass fields and a number of mature trees that our students love to climb. Across the street, are the Balclutha sports fields and the Cross Recreation Centre which is access by children for a variety of purposes throughout the year.

Balclutha Primary School is classified as a Category 1 school and mandates a 30km/h speed limit (variable or permanent) within the school zone.

Existing speed reduction measures

- School signs
- 1x Pedestrian Crossing

Existing Safety Infrastructure



Street / Road	Type	Description
Lanark Street		1 x School sign located on one side of the road
		2x non-motorised users Pedestrian Crossing — Pedestrian crossing signs
		1 x Pedestrian crossing with 2 x amber pedestrian amber globes
Glasgow Street		2 x School signs Located on both sides of the road

Figure 1: Proposed speed limits – Balclutha Primary School



Rosebank School

Rosebank School in Balclutha provides education for learners in Years 1 to 8, located opposite South Otago High School in Balclutha.

Rosebank school has a current role of 246 students. There are 70 students who walk to school each day and 20 that cycle. The remaining students are either dopped off at school by car or bus.

The school operates a Road Patrol on the pedestrian crossing outside the school. Road Patrol operates from 8.35am - 8.50am and 2.55pm - 3.15pm.

Rosebank School is classified as a Category 1 school and mandates a 30km/h speed limit (variable or permanent) within the school zone.

Existing speed reduction measures

- 2 x Raised pedestrian crossings.
- Speed bump signs
- School signs

Existing Safety Infrastructure






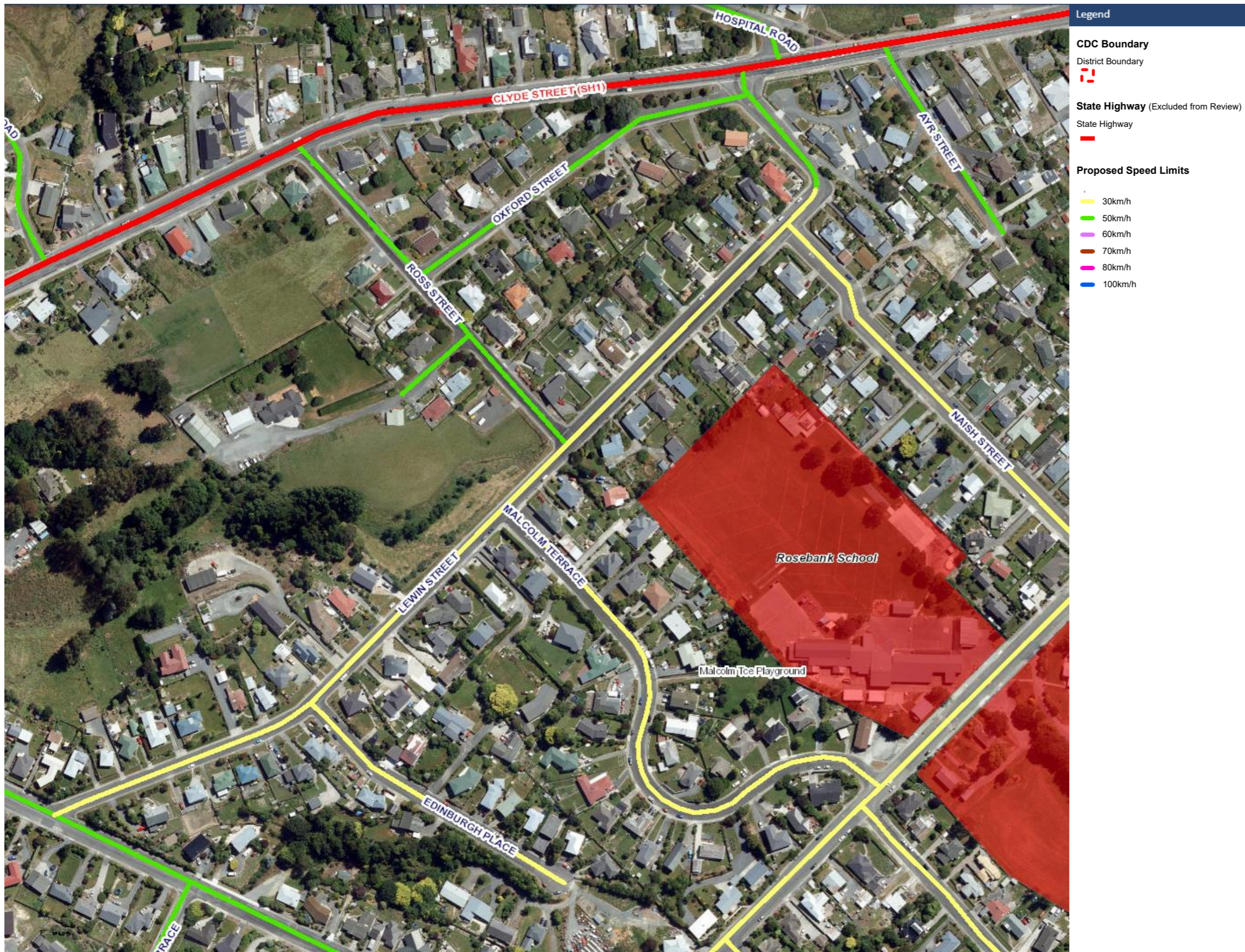
Street / Road	Type	Description
Frances Street	  	2 x School signs 5 x Pedestrian crossing approach signs in total at the raised pedestrian crossings 2 x Raised Pedestrian crossings with amber globes
Malcolm Terrace		1 x School sign located just before the intersection with Frances Street.
Naish Street		1 x School sign located just before the intersection with Frances Street.

Figure 2: Proposed speed limits – Rosebank Primary School



South Otago High School

South Otago High School was founded in 1926 and has a strong tradition of academic, sporting and cultural success. The school caters for all students from Year 9 to Year 13.

South Otago High School has a current role of 480 students. There are 200 students who walk to school each day and 5 that cycle. The remaining students drive themselves or dropped off to school by car or bus.

South Otago High School is classified as a Category 1 school and mandates a 30km/h speed limit (variable or permanent) within the school zone.

Existing speed reduction measures

- 2 x Raised pedestrian crossings.
- Speed bump signs
- School signs

Existing Safety Infrastructure






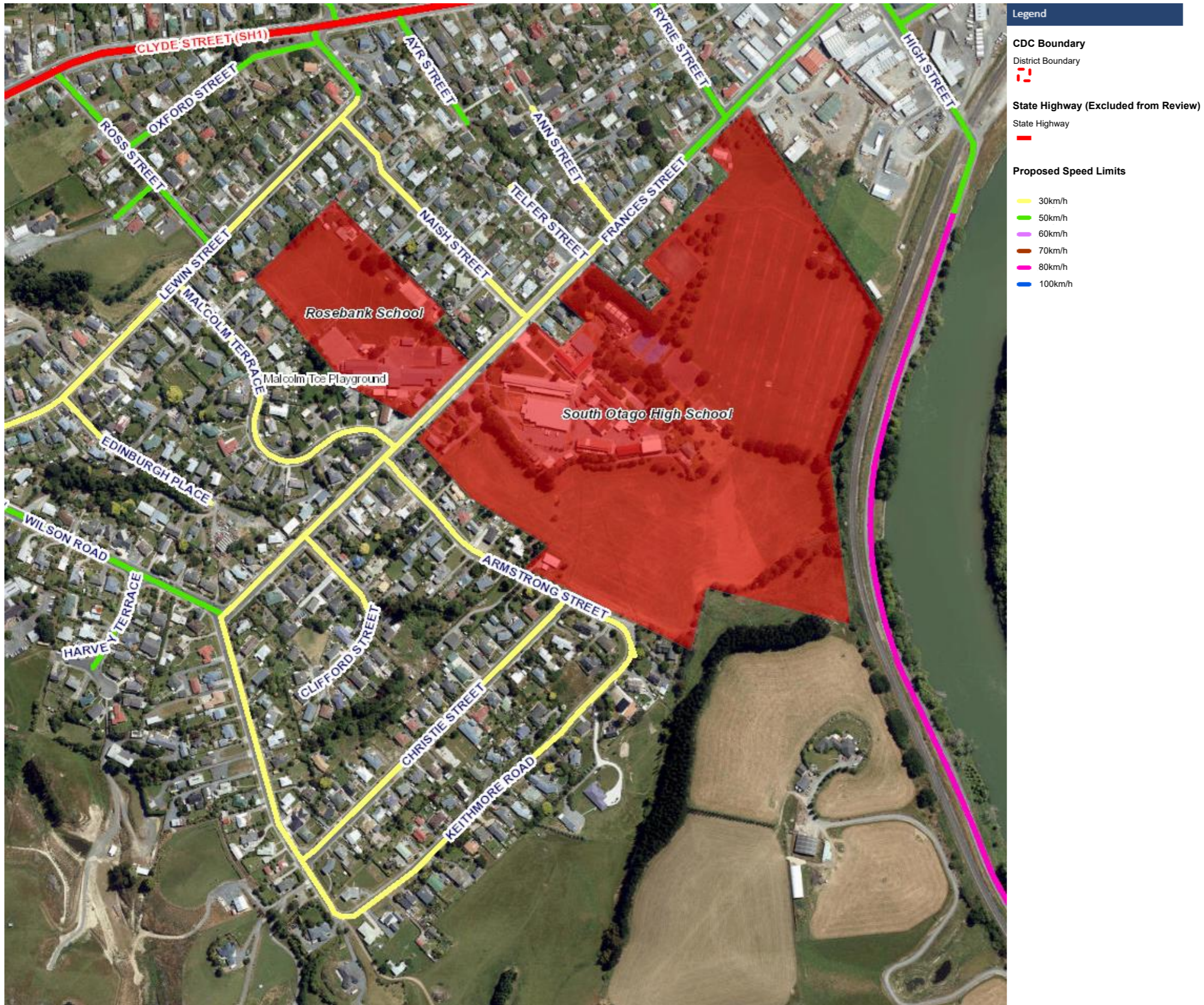
Street / Road	Type	Description
Frances Street	  	2 x School signs
		5 x Pedestrian crossing approach signs in total at the raised pedestrian crossings
		2 x Raised Pedestrian crossings with amber globes
Malcolm Terrace		1 x School sign located just before the intersection with Frances Street.
Naish Street		1 x School sign located just before the intersection with Frances Street.

Figure 3: Proposed speed limits – South Otago High School



Stirling School

Stirling School opened in 1879 and is located rurally 5 kilometres from Balclutha. Stirling School is a co-educational full primary, with students from new entrant to year 8.

Stirling School has a current role of 52 students. There are 8 students who walk to school each day and 2 that cycle. The remaining students are either dopped off at school by car or bus.

The school is classified as a Category 1 school and mandates a 30km/h speed limit (variable or permanent) within the school zone.

Existing speed reduction measures

- Nil

Existing Safety Infrastructure



Street / Road	Type	Description
Baker Street		3 x School signs – 2 x North Baker Street and 1 x South Baker Street
Boyd Street		1 x School sign located N on Boyd Street

Figure 4: Proposed speed limits – Stirling School



St Joseph's School

St Joseph's is an integrated full primary school with students from new entrant – Year 8.

St Joseph's School has a current role of 58 students. There are 7 students who walk to school each day – the remaining students are either dopped off at school by car or bus.

The school also accommodates Joe's Kids Club which provides before school, after school, and school holiday care.

The School is classified as a Category 1 school and mandates a 30km/h speed limit (variable or permanent) within the school zone.

Existing speed reduction measures

- Nil

Existing Safety Infrastructure



Street / Road	Type	Description
Stewart Street		1 x School sign on west Stewart Street 1 x School sign on east Stewart Street
Gordon Street		1 x School sign on North Stewart Street 1 x School sign on South Gordon Street

Figure 5: Proposed speed limits – St Joseph’s School



Catlins Ward

The Catlins Area School

Set on the scenic Catlins coast of New Zealand, The Catlins Area School is located 25km from Balclutha. The school has students from new entrant to year 13.

The Catlins Area School has a current role of 119 students. There are 32 students who walk to school each day and 3 that cycle. The remaining students are either dropped off at school by car or bus.

Catlins Area School is classified as a Category 1 school and mandates a 30km/h speed limit (variable or permanent) within the school zone.

Existing speed reduction measures

- Nil

Existing Safety Infrastructure



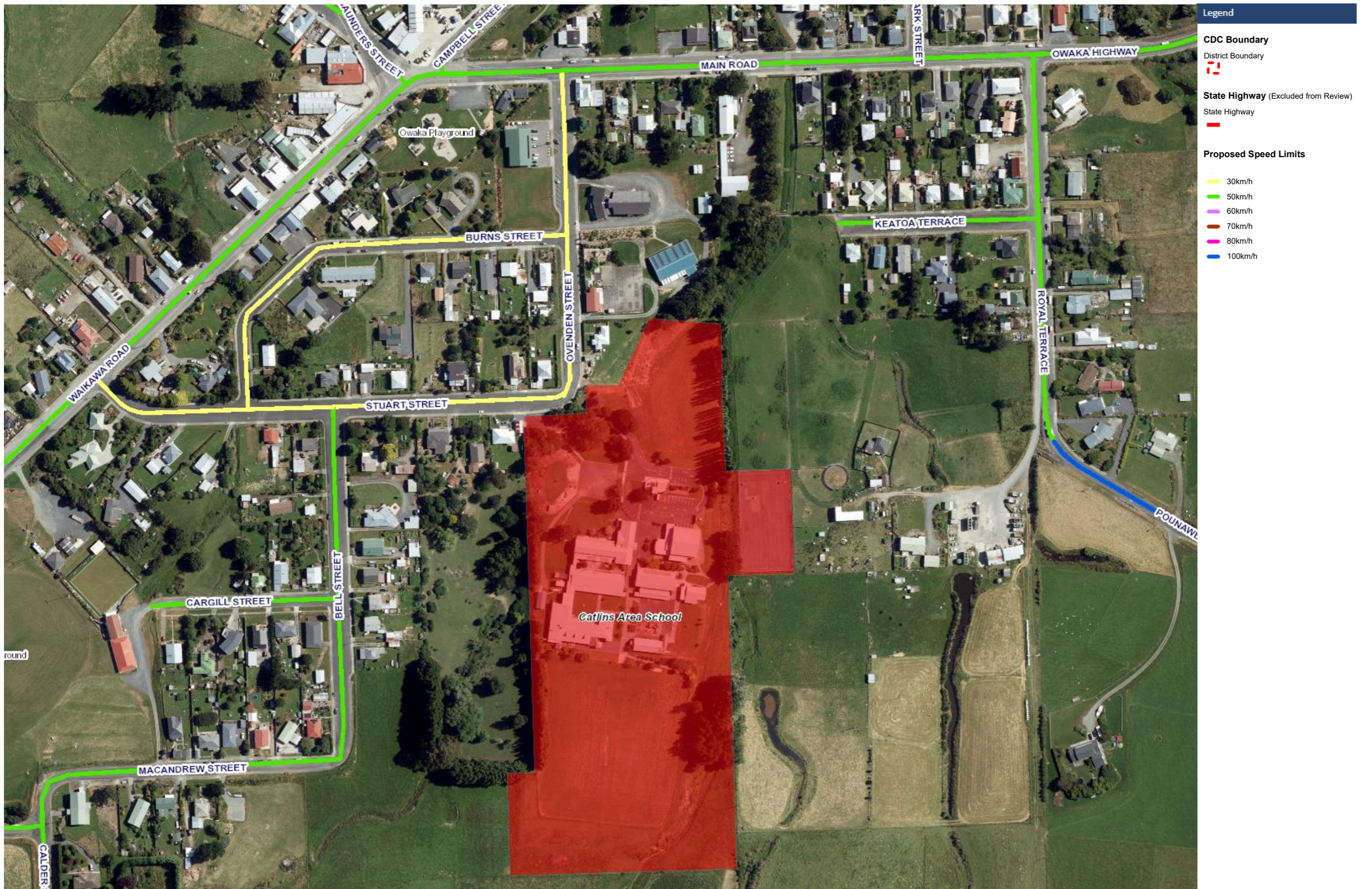
Street / Road	Type	Description
Stuart Street		1 x School signs – East end of Stuart Street
Ovenden Street		1 x School signs – Middle of Stuart Street

Figure 6: Proposed speed limits – The Catlins Area School



Romahapa School

Romahapa School is a full primary co-educational School and was established in 1856 – the oldest in South Otago. The school is set on 10 acres of land and is 17kms south of Balclutha.

Romahapa School has a current role of 68 students. Students are either dopped off at school by car or by the two courtesy coaches that the school owns and operates to transport children to school.

The School is classified as a Category 2 school and mandates a 60km/h speed limit (permanent) within the school zone.

Existing speed reduction measures

- Nil

Existing Safety Infrastructure


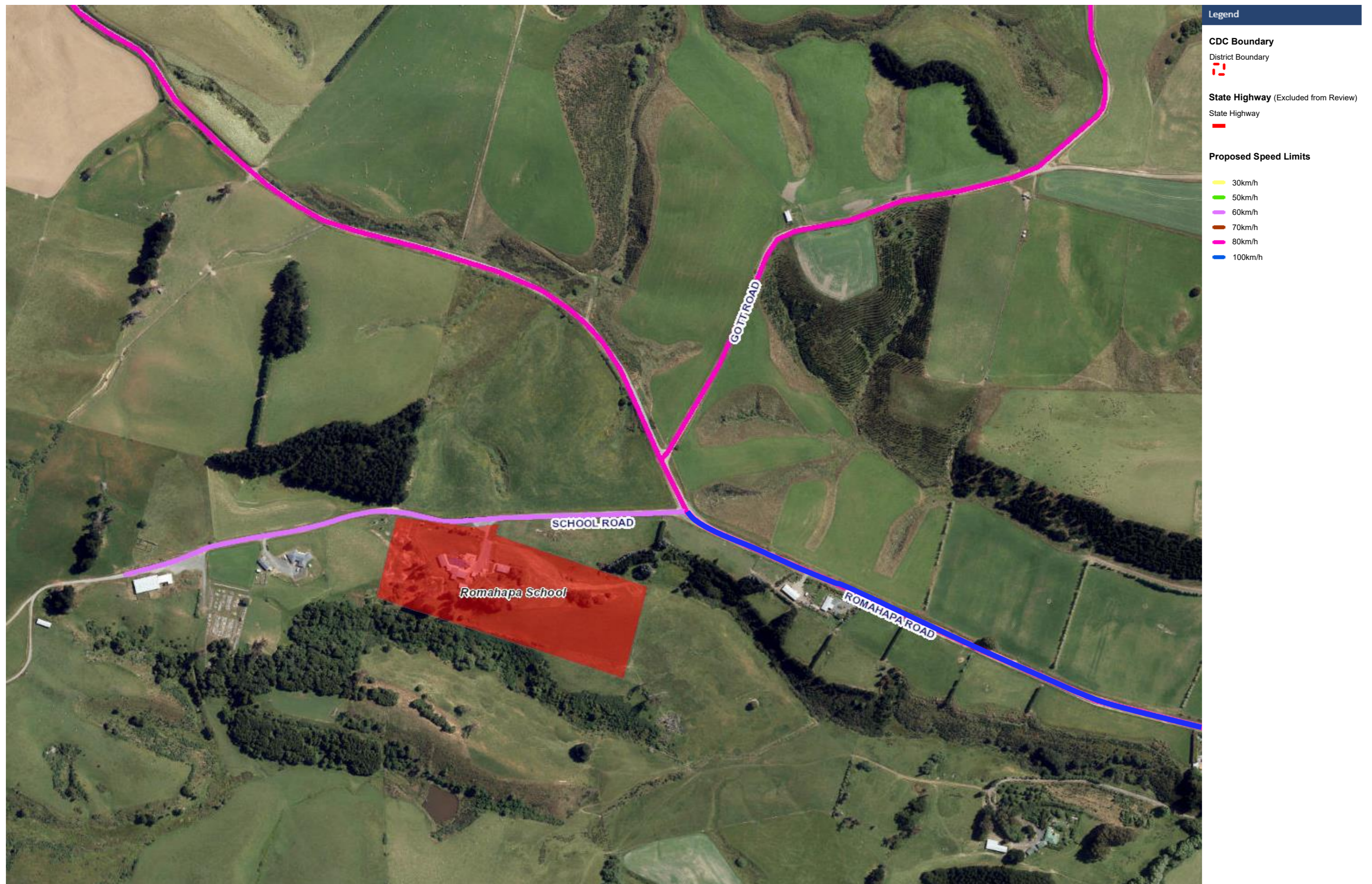
Street / Road	Type	Description
School Road		2 x School signs – East and West of Romahapa School

Figure 7: Proposed speed limits – Romahapa School



Tahakopa School

Tahakopa School are a year 1-8 primary school with a 126-year history of educating students in the Tahakopa district.

Tahakopa School has a current role of 3 students. There is 1 student who walks to school each day and 1 that cycles. The remaining students are dopped off at school by car.

The School is classified as a Category 2 school and mandates a 60km/h speed limit (permanent) within the school zone.

Existing speed reduction measures

- Nil

Existing Safety Infrastructure


Street / Road	Type	Description
Tahakopa Valley Road		3 x School signs – North and South of Tahakopa School

Figure 8: Proposed speed limits – Tahakopa School



Clinton Ward

Clinton Primary School

Clinton Primary School are a year 1-8 primary school. The school district extends east from Windy Ridge on the south road through to 3km north of Clinton, taking in areas of Wairuna and Taumata, through the Kuriwao Gorge and east along Hillfoot Road.

Clinton Primary School has a current role of 73 students. There are 12 students who walk to school each day and 8 that cycle. The remaining students are dopped off at school by car. Approximately 30% of the students enrolled at Clinton live in the township, the remainder travel via four school buses.

The School is classified as a Category 1 school and mandates a 30km/h speed limit (variable or permanent) within the school zone.

Existing speed reduction measures

- Nil

Existing Safety Infrastructure



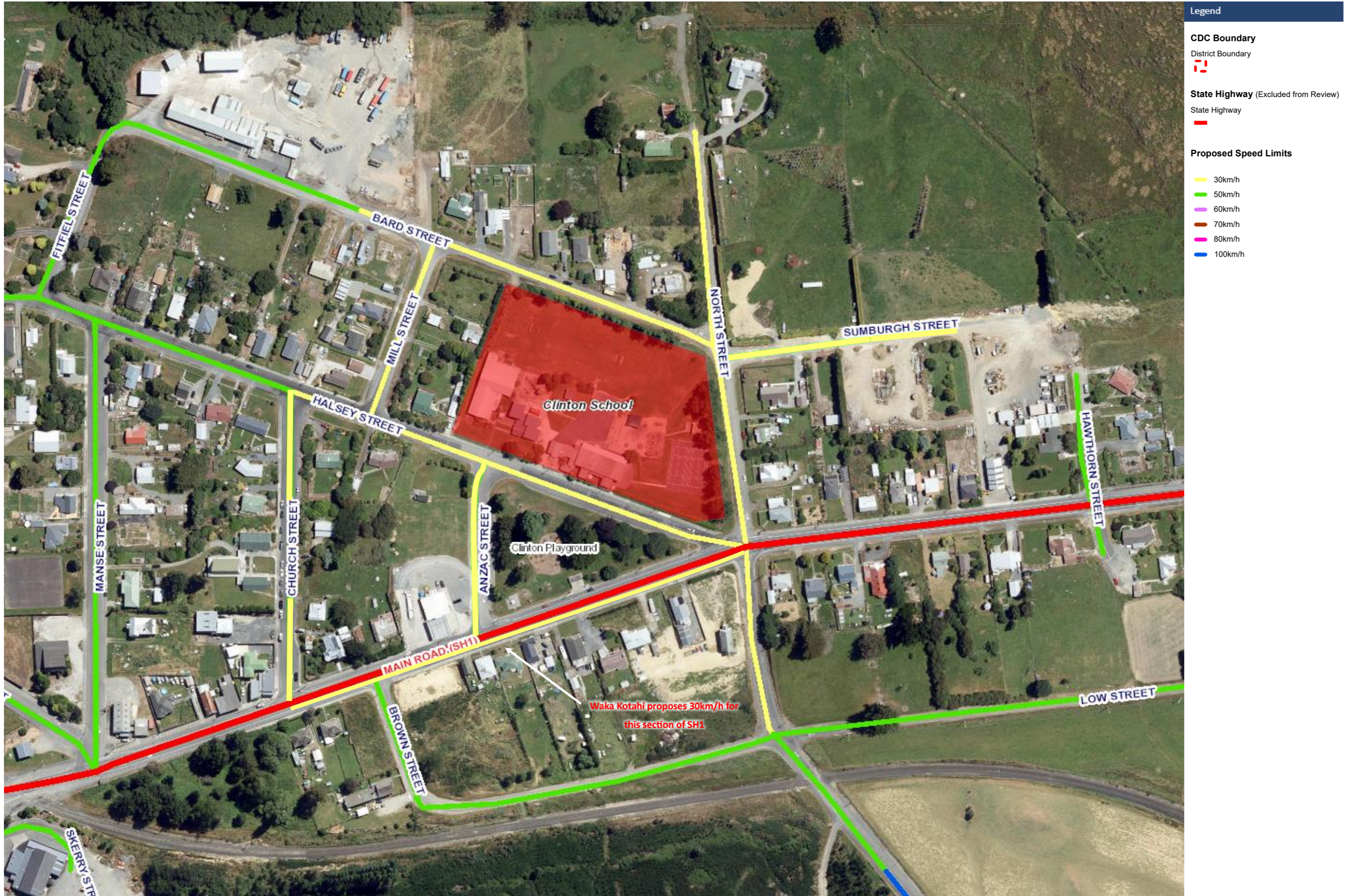
Street / Road	Type	Description
Halsey Steet		2 x School signs – East and West of Clinton Primary School
Mill Street		1 x School sign at intersection of Mill Street and Bard Street

Figure 9: Proposed speed limits – Clinton Primary School



Waiwera South School

Waiwera South School is a full primary school, year 0-8 and is situated 20 kilometres west of Balclutha. The Waiwera South community is made up of a variety of farming families and their support industries.

Waiwera South School has a current role of 32 students. There are 5 students who walk to school each day and 3 that cycle. The remaining students are dropped off at school by car or bus.

Pupils living further than 3.2 kms from school are eligible for transport to and from school each day. The bus run services the areas surrounding Waiwera South including Clifton, Waiwera Gorge and the Taumata area.

The School is classified as a Category 1 school and mandates a 30km/h speed limit (variable or permanent) within the school zone.

Existing speed reduction measures

- Nil

Existing Safety Infrastructure



Street / Road	Type	Description
May Street		1 x School sign at northern end of May Street
Anderson Road		1 x School sign at intersection of Waiwera Station Road and Anderson Road. 1 x School sign west of May Street and Anderson Road Intersection

Figure 10: Proposed speed limits – Waiwera South School



Clutha Valley Ward

Clutha Valley School

Clutha Valley Primary is a rural school set in the Clydevale/Greenfield area of South Otago situated 25km from Balclutha. The pupils at the school range from the age of five to thirteen years (Year 0 - 8).

Clutha Valley School has a current role of 124 students. There are 4 students who walk to school each day and 4 that cycle. The remaining students are dopped off at school by car or bus.

The school is classified as a Category 2 school and mandates a 60km/h speed limit (permanent) within the school zone.

Existing speed reduction measures

- 1 x Permanent School Zone sign

Existing Safety Infrastructure



Street / Road	Type	Description
Clutha Valley Road		1 x Permanent School Zone sign 200m south of Clutha Valley School
Clutha Valley Road		1 x School sign 300m North of Clutha Valley School

Figure 11: Proposed speed limits – Clutha Valley School



Warepa School

Warepa School is a small rural school set in the Warepa area of South Otago – situated 13km from Balclutha. The pupils at the school range from the age of five to thirteen years (Year 0 - 8).

Warepa School has a current role of 61 students. There are 2 students who walk to school each day and 2 that cycle. The remaining students are dropped off at school by car or bus. Warepa School has two buses that it owns and operates - the "First bus" covers Kakapuaka, Toiro, Waitepeka areas and the "Second bus" picking up children from the Kaihiku, Hillfoot Road area.

The school is classified as a Category 2 school and mandates a 60km/h speed limit (permanent) within the school zone.

Existing speed reduction measures

- Nil

Existing Safety Infrastructure



Street / Road	Type	Description
Old Port Road		1 x School sign 150m east of Warepa School 1 x School sign 180m NW of Warepa School
Croydon Road		1 x School sign at school boundary

Figure 12: Proposed speed limits – Warepa School



Kaitangata Ward

Kaitangata Primary School

Kaitangata Primary School is set in the semi-rural town of Kaitangata on the edge of the Clutha River and 10 minutes from Balclutha. The pupils at the school range from the age of five to thirteen years (Year 0 - 8).

Kaitangata Primary School has a current role of 96 students. There are 15 students who walk to school each day and 3 that cycle. The remaining students are dopped off at school by car or bus.

The school also owns and operates its own minibus which assist with transport to school activities and provides daily transport for students from Balclutha.

The school is classified as a Category 1 school and mandates a 30km/h speed limit (variable or permanent) within the school zone.

Existing speed reduction measures

- Pedestrian Crossing at Salcombe Street
- Pedestrian Crossing at Wangaloa Road

Existing Safety Infrastructure





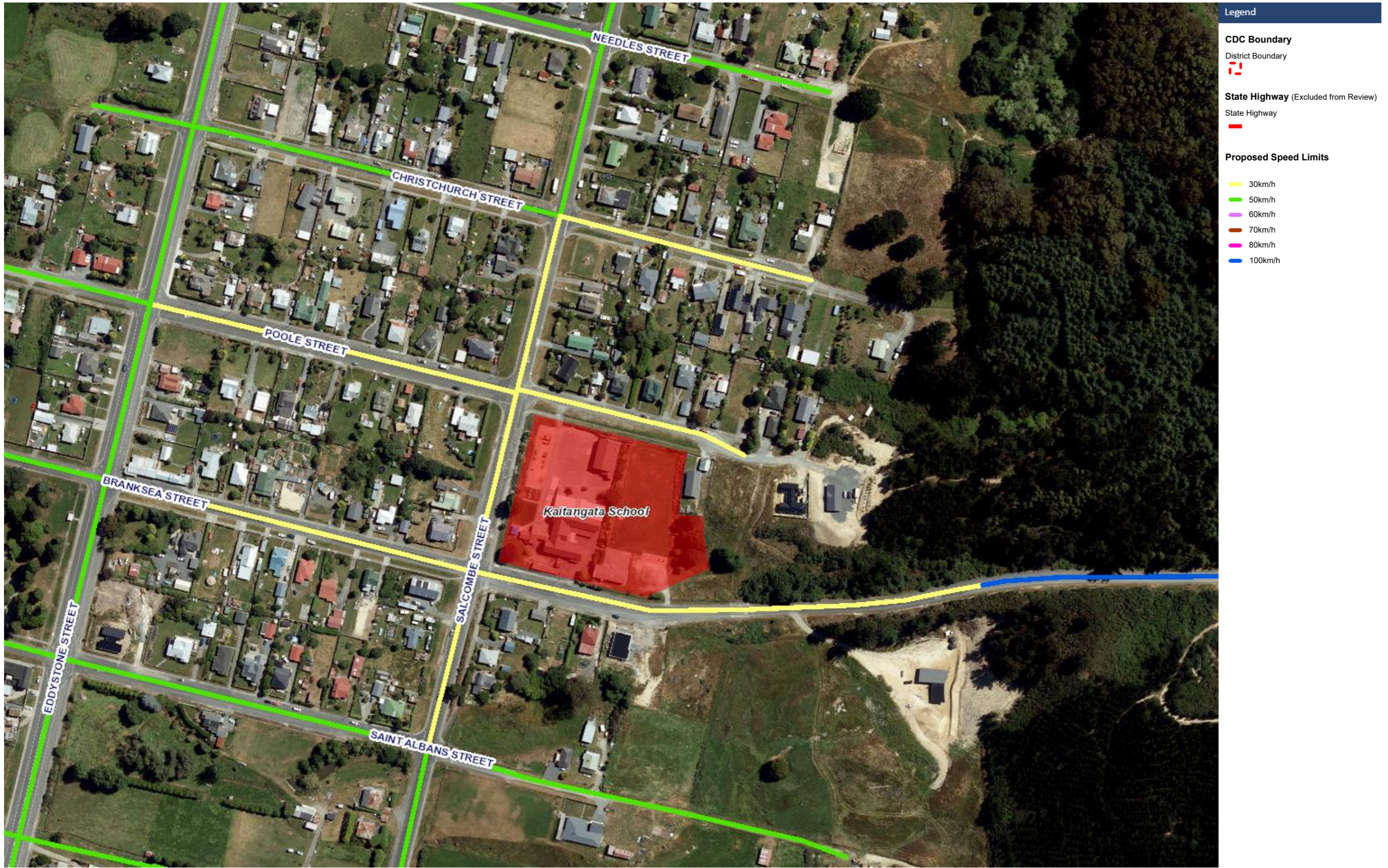
Street / Road	Type	Description
Salcombe Street		1 x School sign 50m south of Wangaloa Road intersection
		1 x Pedestrian crossing with amber globes
Wangaloa Road		1 x Pedestrian crossing with amber globes
		1 x Pedestrian crossing approach sign
Branksea Street		1 x School sign mid-way
Poole Street		1 x School sign mid-way

Figure 13: Proposed speed limits – Kaitangata Primary School



Lawrence / Tuapeka Ward

Waitahuna School

Waitahuna School is a rural school which provides education for children from Years 1 to 6 and is situated 10 minutes south of Lawrence.

Waitahuna School has a current role of 5 student – all of which walk to school each day.

The school is classified as a Category 1 school and mandates a 30km/h speed limit (permanent) within the school zone.

Existing speed reduction measures

- Nil

Existing Safety Infrastructure

Street / Road	Type	Description
N/A	Nil	N/A

Figure 14: Proposed speed limits – Waitahuna School



Lawrence Area School

Lawrence Area School is set in the town of Lawrence. The pupils at the school range from the age of five to eighteen years (Year 0 - 13).

Lawrence Area School has a current role of 132 students. There are 30 students who walk to school each day and 5 that cycle. The remaining students are dopped off at school by car or bus.

The school also houses the Educare, Tuapeka Aquatic Centre., Lawrence Skatepark and Simpson Park complex.

The school is classified as a Category 1 school and mandates a 30km/h speed limit (variable or permanent) within the school zone.

Existing speed reduction measures

- Nil

Existing Safety Infrastructure



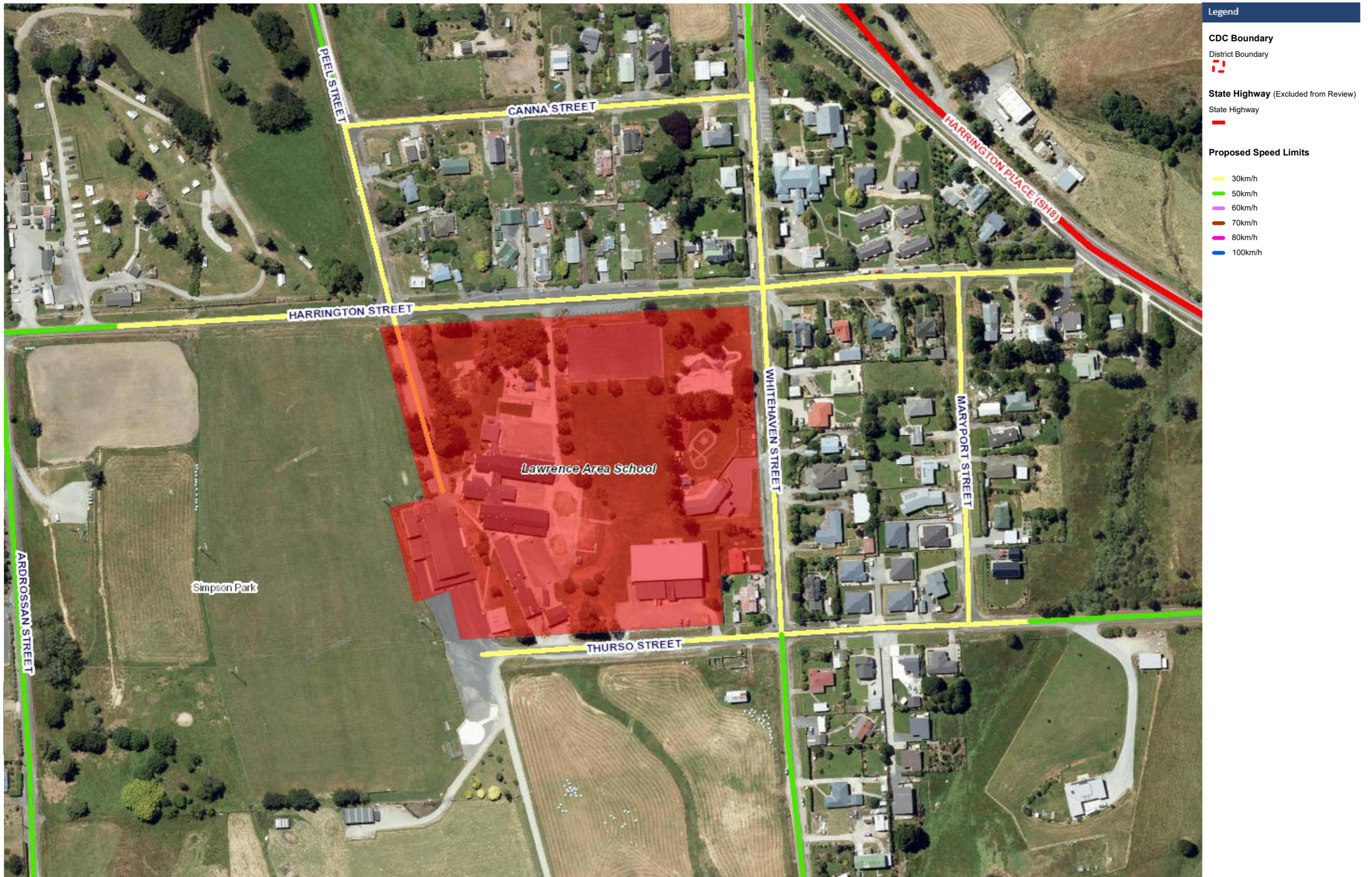
Street / Road	Type	Description
Harrington Street		2 x School signs each end of the street
Whitehaven Street		2 x School signs each end of the street
		1 x Pedestrian crossing approach sign

Figure 15: Proposed speed limits – Lawrence Area School



North Bruce Ward

Milton Primary School

Milton Primary School is a contributing Year 1-6 primary school located in South Otago, 25km north of Balclutha.

Milton Primary School has a current role of 117 students. There are 80 students who walk to school each day and 20 that cycle. The remaining students are dropped off at school by car or bus.

The school is classified as a Category 1 school and mandates a 30km/h speed limit (variable or permanent) within the school zone.

Existing speed reduction measures

- Nil

Existing Safety Infrastructure



Street / Road	Type	Description
Cross Street		1 x Sign on Cross Street
Coronation Court		2 x School signs each side of the street

Figure 16: Proposed speed limits – Milton Primary School



St Marys Primary School

St Marys Primary School is a contributing Year 1-6 primary school located in South Otago, 25km north of Balclutha.

St Marys Primary School has a current role of 57 students. There are 8 students who walk to school each day and 16 that cycle. The remaining students are dropped off at school by car or bus.

The school is classified as a Category 1 school and mandates a 30km/h speed limit (variable or permanent) within the school zone.

Existing speed reduction measures

- Nil

Existing Safety Infrastructure



Street / Road	Type	Description
Pope Street		1 x School sign
Dryden Street		2 x School signs each end of the street

Figure 17: Proposed speed limits – St Marys Primary School



Taieri Beach School

Taieri Beach School is a small rural full primary (Year 0-8) school set in a rurally near the seaside village of Taieri Mouth, a 30-minute commute south of Dunedin city.

Taieri Beach School has a current role of 4 students. There are 2 students who walk to school each day and 2 that cycle.

The school is classified as a Category 1 school and mandates a 30km/h speed limit (variable or permanent) within the school zone.

Existing speed reduction measures

- Nil

Existing Safety Infrastructure


Street / Road	Type	Description
Moturata Road		2 x School signs

Figure 18: Proposed speed limits – Taieri Beach School



Tokoiti School

Tokoiti School is a small rural school located near the town of Milton, South Otago. It caters for learners from Years 1 to 6.

Tokoiti School has a current role of 31 students. There are no students who walk to school each day and 2 that cycle. The remaining students are dopped off at school by car or bus.

The school is classified as a Category 1 school and mandates a 30km/h speed limit (variable or permanent) within the school zone.

Existing speed reduction measures

- Nil

Existing Safety Infrastructure





Street / Road	Type	Description
Tokoiti Road		2 x School signs
Leeman Street		1 x School sign
Back Road		1 x School sign
Toko Mouth Road		1 x School sign

Figure 19: Proposed speed limits – Tokoiti School



Tokomairiro High School

Tokomairiro High School is a Year 7 to Year 13 school in Milton, about 25 kilometres north of Balclutha. The High School serves the Tokomairiro District – this covers Lake Waihola in the north to the coast south of the Taieri River in the east, Lovells Flat in the south, and the Manuka Gorge on State Highway 8 in the west.

Tokomairiro High School has a current role of 226 students. There are 90 students who walk to school each day and 15 that cycle. The remaining students are dropped off at school by car or bus.

The school is classified as a Category 1 school and mandates a 30km/h speed limit (variable or permanent) within the school zone.

Existing speed reduction measures

- Nil

Existing Safety Infrastructure


Street / Road	Type	Description
Union Street SH1		1 x pedestrian crossing
		2 x amber pedestrian amber globes
		2 x school crossing signs
		2x non-motorised users Pedestrian Crossing — Pedestrian crossing signs

Figure 20: Proposed speed limits – Tokomairiro High School



Waihola District School

Waihola District School is a full primary school (Year 1 to Year 8) in Waihola, about 15 kilometres north of Milton. The school was established in 1859, one of the first schools in Otago.

Waihola District School has a current role of 37 students. There are 20 students who walk to school each day and 9 that cycle. The remaining students are dopped off at school by car or bus.

The school is classified as a Category 1 school and mandates a 30km/h speed limit (variable or permanent) within the school zone.

Existing speed reduction measures

- Nil

Existing Safety Infrastructure



Street / Road	Type	Description
Kilgour Stret		1 x School sign
Chatham Street		1 x School sign

Figure 21: Proposed speed limits – Waihola District School



West Otago Ward

Blue Mountain College

Blue Mountain College is a co-educational, year 7 - 13 secondary school catering for the needs of the West Otago community.

The school is situated on an 8.5 ha site on the edge of Tapanui township – 54 kilometres west of Lawrence.

Blue Mountain College has a current role of 209 students. There are 53 students who walk to school each day and 12 that cycle. The remaining students are dropped off at school by car or bus.

The school is classified as a Category 1 school and mandates a 30km/h speed limit (variable or permanent) within the school zone.

Existing speed reduction measures

- Nil

Existing Safety Infrastructure


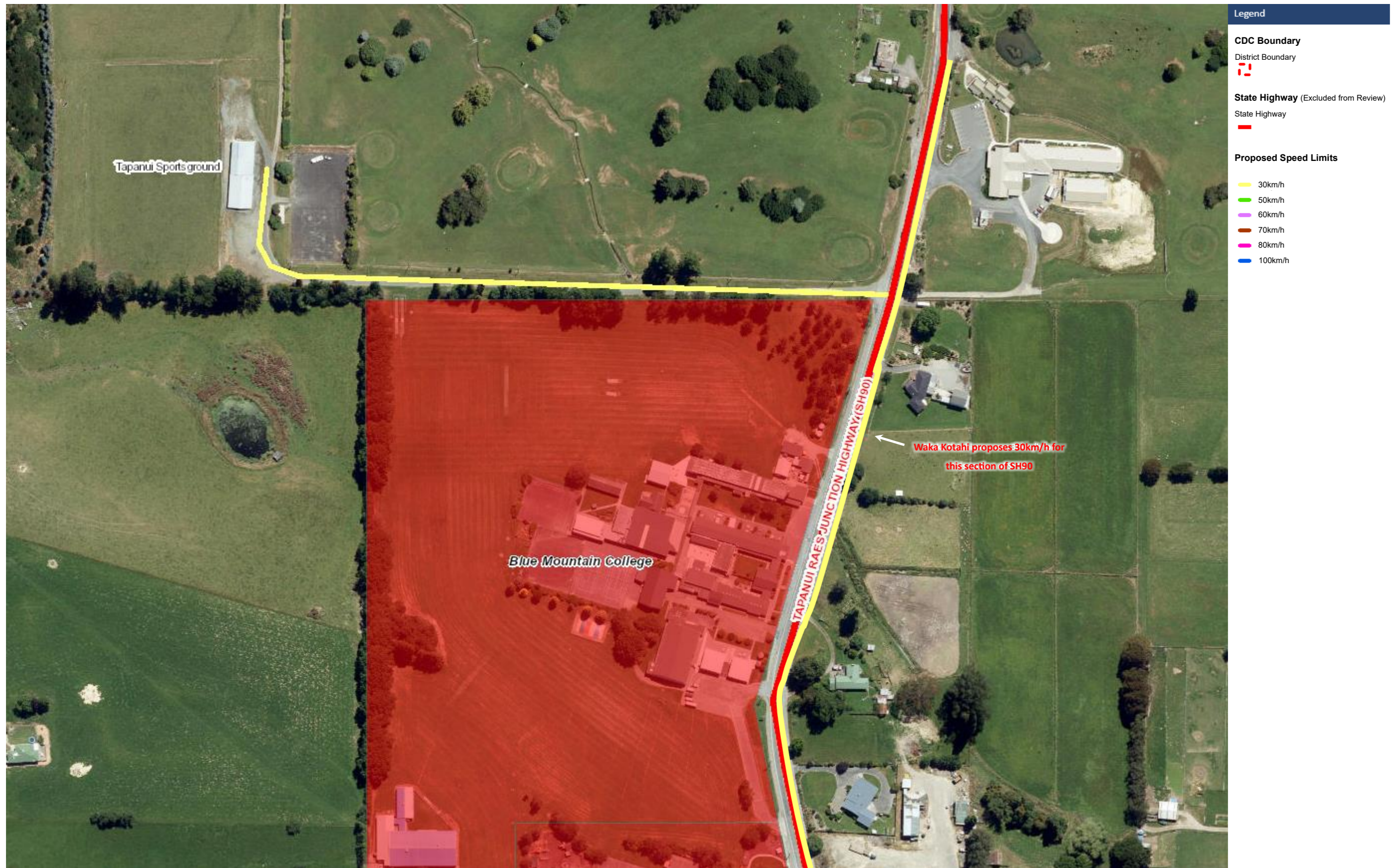
Street / Road	Type	Description
Tapanui Raes Junction Highway (SH90)		2 x School signs at North and Southern end of school

Figure 22: Proposed speed limits – Blue Mountain College



Heriot Primary School

Heriot School is a contributing primary school catering for students in years 1- 6. It is located in the heart of rural West Otago.

Heriot Primary school has a current role of 84 students. There are 8 students who walk to school each day and 4 that cycle. The remaining students are dropped off at school by car or bus.

The school is classified as a Category 1 school and mandates a 30km/h speed limit (variable or permanent) within the school zone.

Existing speed reduction measures

- Nil

Existing Safety Infrastructure


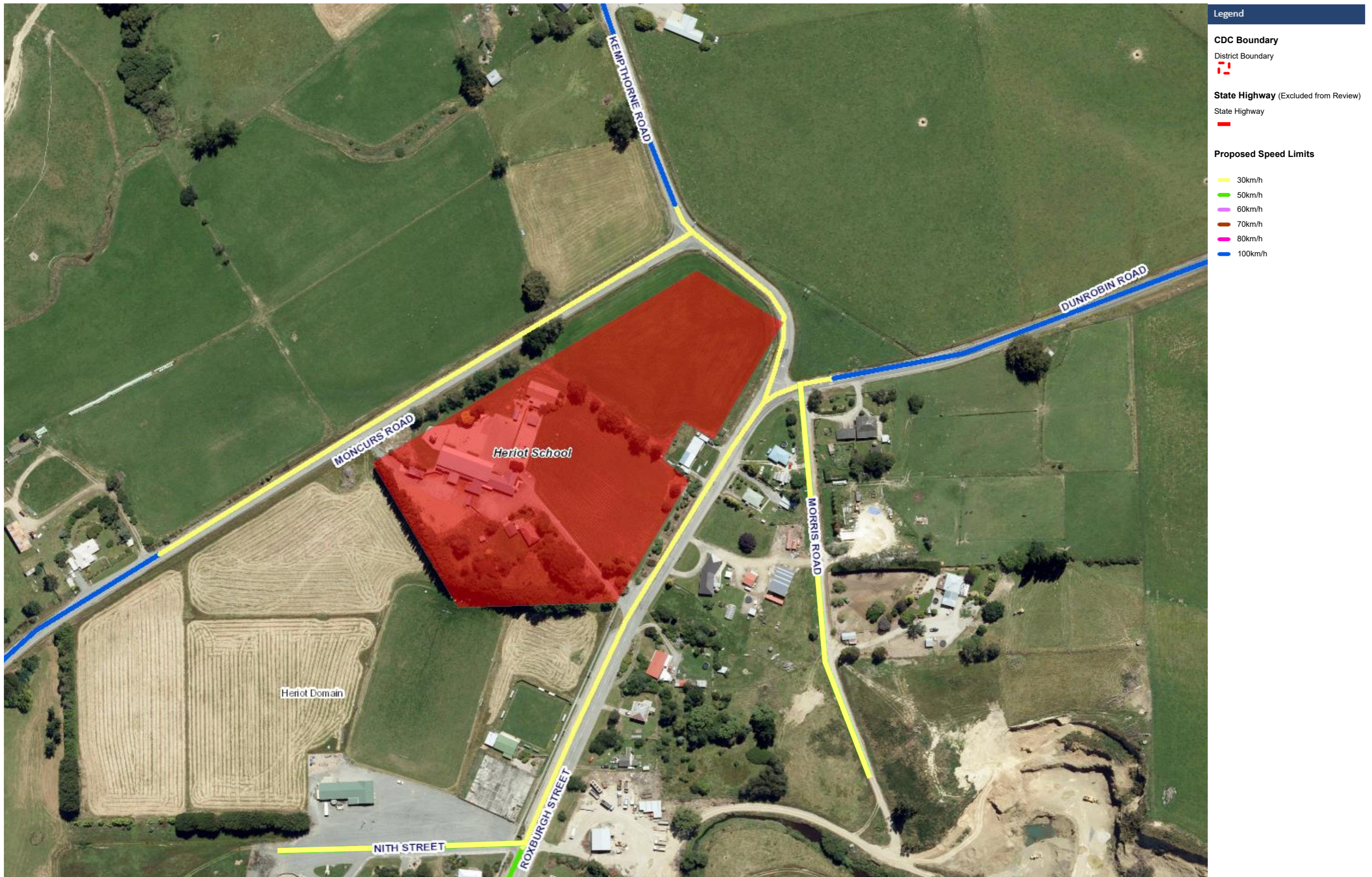
Street / Road	Type	Description
Roxburgh Street		1 x school sign south of school entrance

Figure 23: Proposed speed limits – Heriot Primary School



Tapanui School

Tapanui School is a contributing primary school catering for students in years 1- 6. It is located in the township of Tapanui, West Otago with the Play Centre, Kidzway Early Learning Centre and Blue Mountain College situated alongside. Tapanui Primary School is the biggest primary school in West Otago.

Tapanui school has a current role of 77 students. There are 30 students who walk to school each day and 10 that cycle. The remaining students are dopped off at school by car or bus.

The school is classified as a Category 1 school and mandates a 30km/h speed limit (variable or permanent) within the school zone.

Existing speed reduction measures

- Nil

Existing Safety Infrastructure




Street / Road	Type	Description
Essex Street		1 x school sign south of school entrance
Kent Street		1 x school sign west of school entrance
Sussex Street		2 x school sign west and east of school entrance

Figure 24: Proposed speed limits – Tapanui School



Waikoikoi School

Waikoikoi School is a contributing primary school catering for students aged 5 - 11 years of age. It is located 13 kilometres SW of Tapanui, West Otago.

Waikoikoi school has a current role of 13 students. There are 2 students who walk to school each day and none that cycle. The remaining students are dopped off at school by car or bus.

The school is classified as a Category 2 school and mandates a 60km/h speed limit (permanent) within the school zone.

Existing speed reduction measures

- Nil

Existing Safety Infrastructure


Street / Road	Type	Description
Koi Flat Road		2 x school signs north and south of school entrance

Figure 25: Proposed speed limits – Waikoikoi School

