

CLUTHA DISTRICT COUNCIL SPEED LIMITS

(EXCLUDING ALL STATE HIGHWAYS)

DIAGRAM SHEET

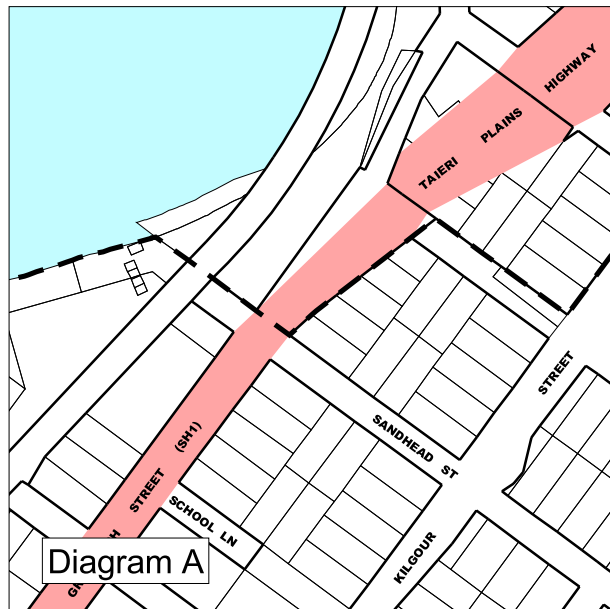


Diagram A

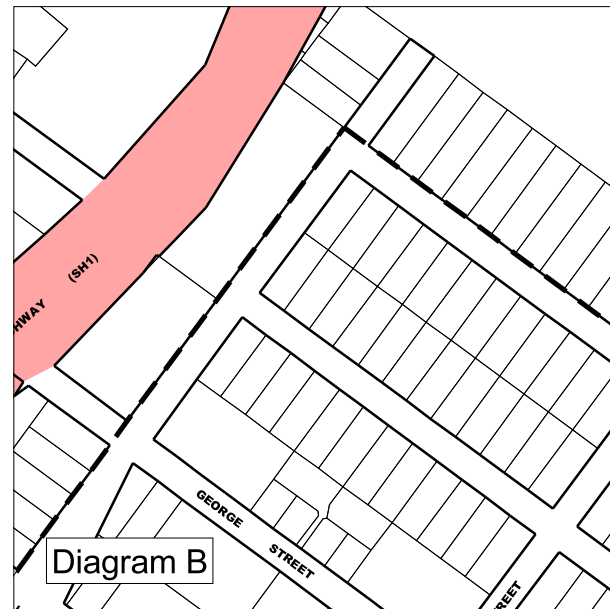


Diagram B

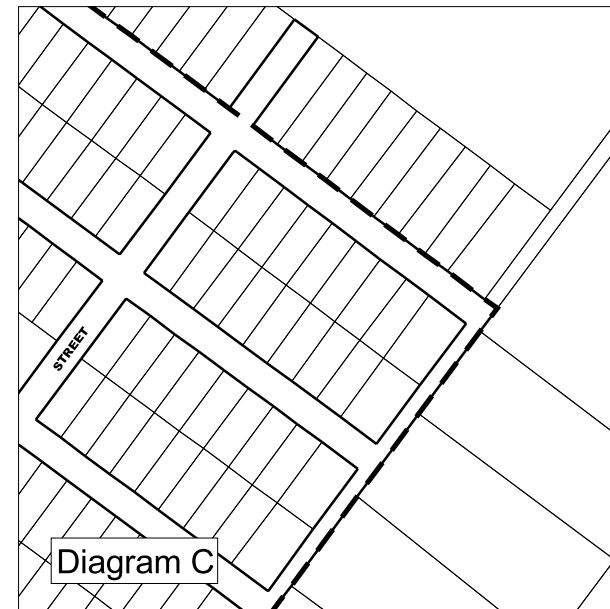


Diagram C

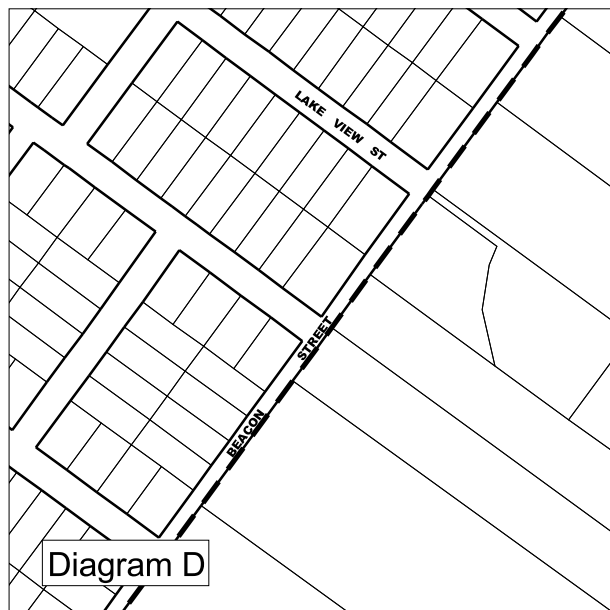


Diagram D

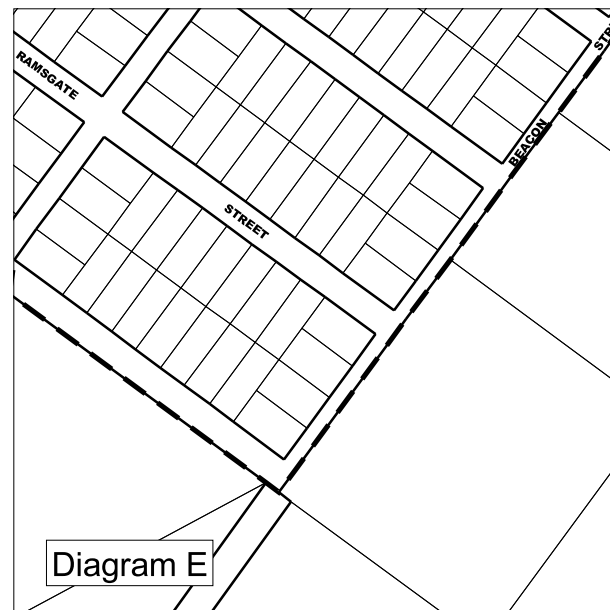


Diagram E

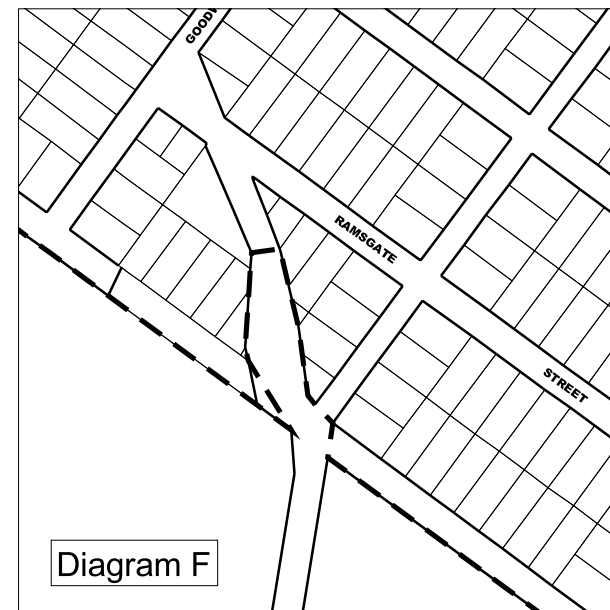


Diagram F

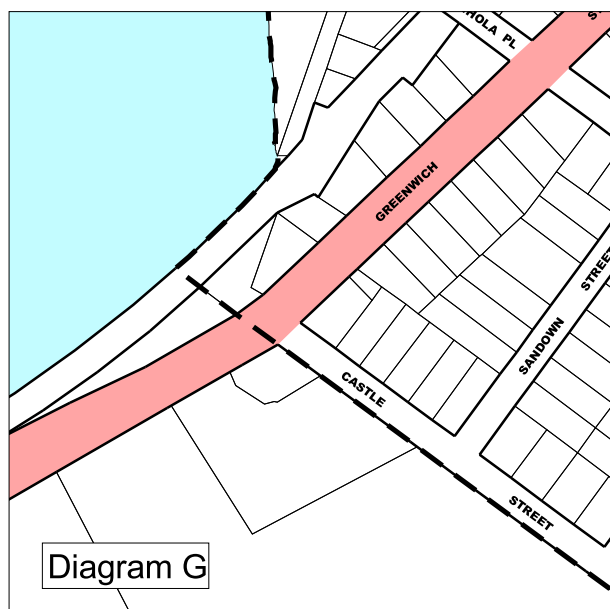




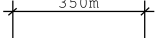


Diagram G

SPEED LIMITS FOR CLUTHA DISTRICT (EXCLUDING ALL STATE HIGHWAYS)

LEGEND

-  BOUNDARY OF URBAN TRAFFIC AREA THAT HAS A SPEED LIMIT OF 50km/h
-  ROAD RESERVE
 CADASTRAL BOUNDARIES
-  STATE HIGHWAYS WHICH ARE EXCLUDED FROM THIS BYLAW
-  350m LENGTH IN METRES OF A SPEED LIMIT OR DISTANCE FROM AN INTERSECTING ROAD TO A SPEED LIMIT BOUNDARY

NOTES

1. SCALE SHOWN ON THIS MAP ARE APPROXIMATE
2. DIMENSIONS SHOW THE BOUNDARIES OF A SPEED LIMIT FOR THE PURPOSES OF THE BYLAW
3. SPEED LIMIT BOUNDARIES THAT CROSS A ROAD DO SO AT RIGHT ANGLES FROM ONE SIDE OF THE ROAD TO THE OTHER UNLESS SHOWN OTHERWISE, BY THE SHORTEST DISTANCE
4. ALL SPEED LIMIT BOUNDARIES MARKED ALONG A ROAD ARE DEEMED TO RUN ALONG THE EDGE OF THE CARRIAGEWAY
5. ALL ROADS SHOWN ON THESE MAPS OUTSIDE AN URBAN TRAFFIC AREA HAVE A SPEED LIMIT OF 100km/h, UNLESS MARKED WITH A DIFFERENT SPEED LIMIT
6. THIS MAP IS PART OF THE CLUTHA DISTRICT COUNCIL ROADING BYLAW 2008
7. REFER ALSO TO SCHEDULES 1-8 IN THE BYLAW

APPROVED:

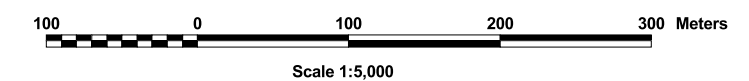
Manager, District Assets

DATE:

PLAN NO.

CDCSP-9a

Sheet 2 of 2



Contains Data Derived from LINZ's DCDB
Supplied under CDC Digital Licence No. 141228/37
CROWN COPYRIGHT RESERVED

