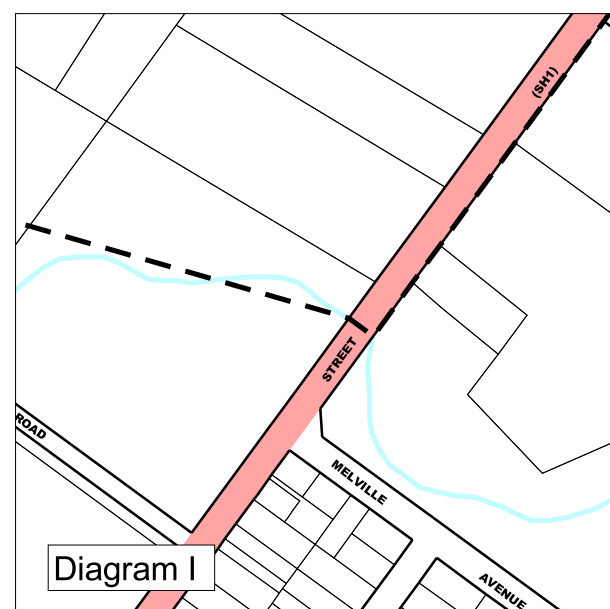
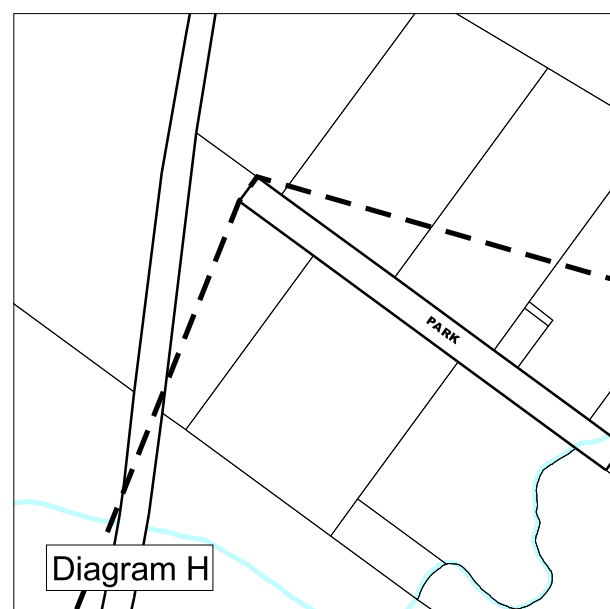
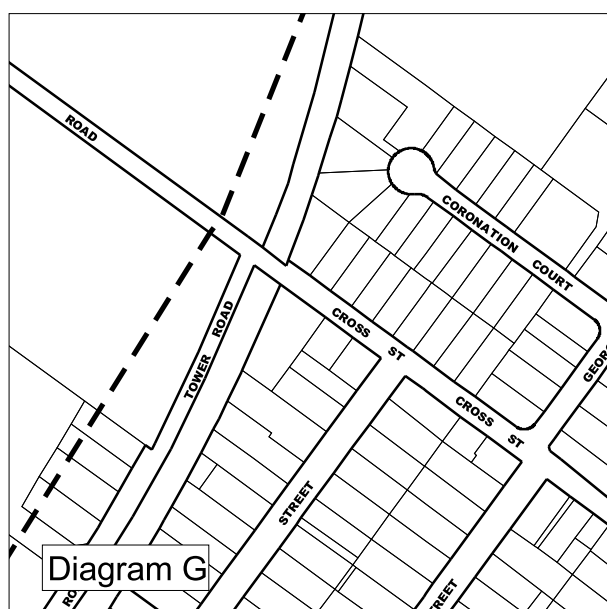
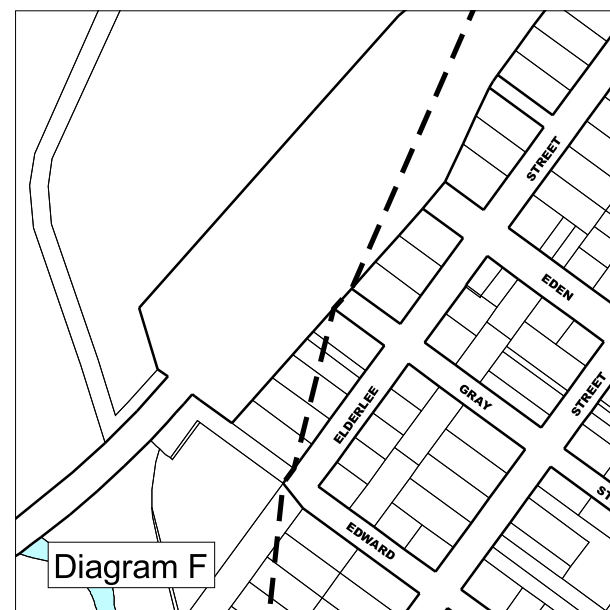
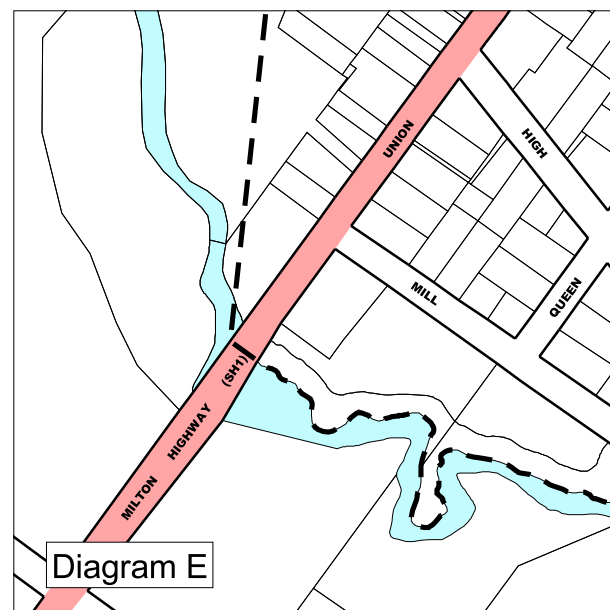
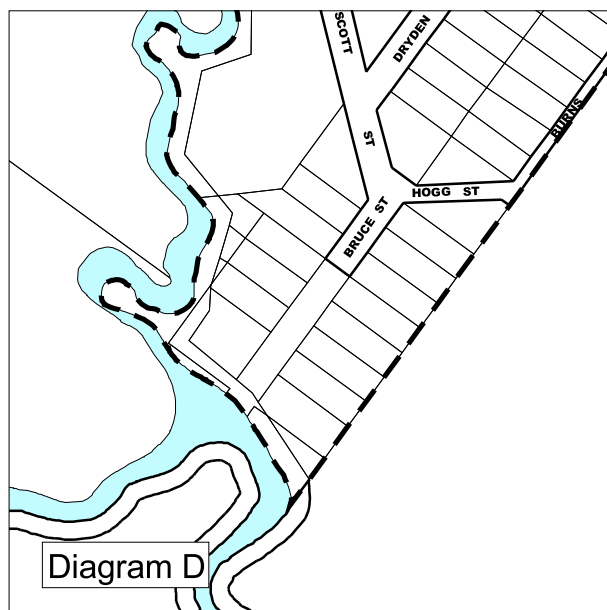
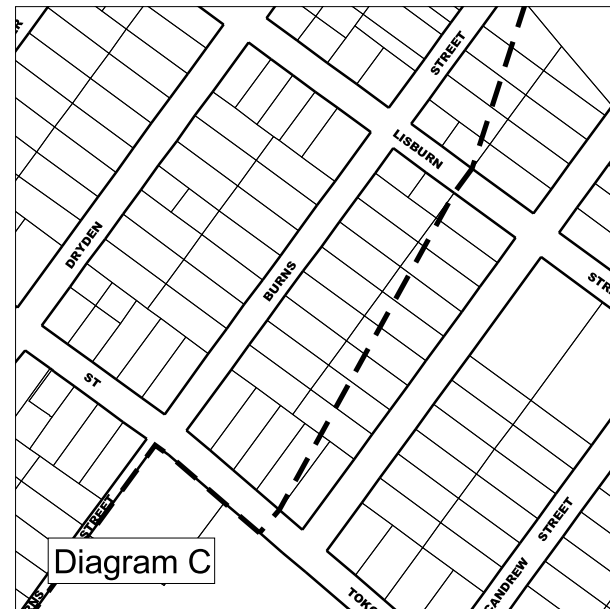
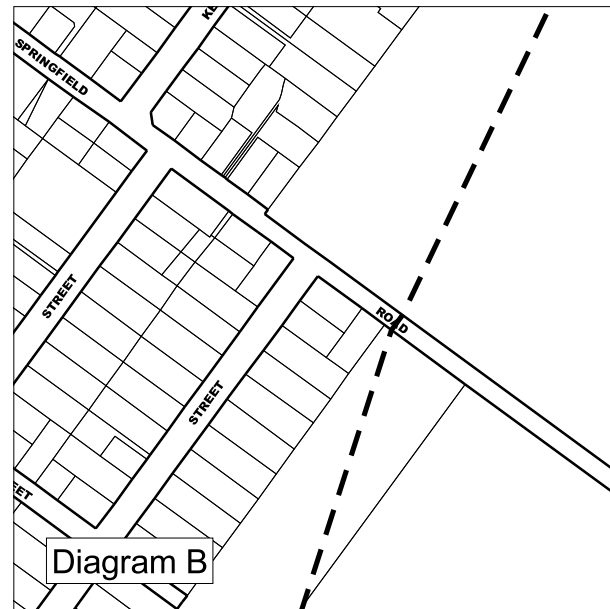
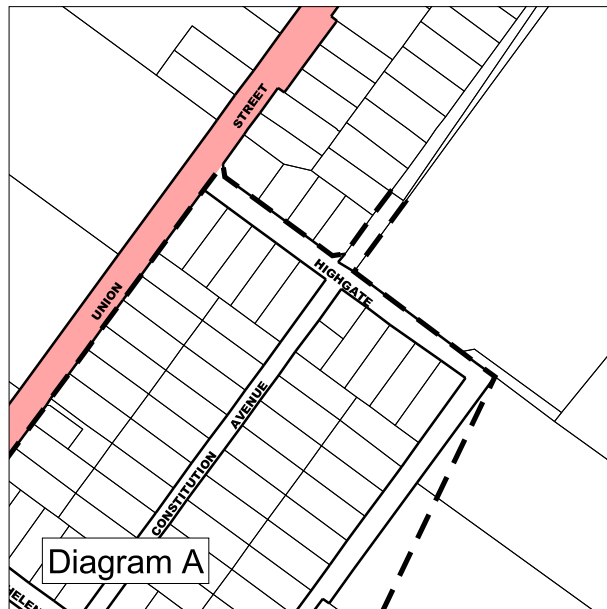


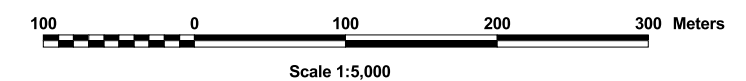
CLUTHA DISTRICT COUNCIL SPEED LIMITS

(EXCLUDING ALL STATE HIGHWAYS)

DIAGRAM SHEET



SPEED LIMITS FOR CLUTHA DISTRICT (EXCLUDING ALL STATE HIGHWAYS)	
LEGEND	
	BOUNDARY OF URBAN TRAFFIC AREA THAT HAS A SPEED LIMIT OF 50km/h
	ROAD RESERVE CADASTRAL BOUNDARIES
	STATE HIGHWAYS WHICH ARE EXCLUDED FROM THIS BYLAW
	350m LENGTH IN METRES OF A SPEED LIMIT OR DISTANCE FROM AN INTERSECTING ROAD TO A SPEED LIMIT BOUNDARY
NOTES	
<ol style="list-style-type: none"> SCALE SHOWN ON THIS MAP ARE APPROXIMATE DIMENSIONS SHOW THE BOUNDARIES OF A SPEED LIMIT FOR THE PURPOSES OF THE BYLAW SPEED LIMIT BOUNDARIES THAT CROSS A ROAD DO SO AT RIGHT ANGLES FROM ONE SIDE OF THE ROAD TO THE OTHER UNLESS SHOWN OTHERWISE, BY THE SHORTEST DISTANCE ALL SPEED LIMIT BOUNDARIES MARKED ALONG A ROAD ARE DEEMED TO RUN ALONG THE EDGE OF THE CARRIAGEWAY ALL ROADS SHOWN ON THESE MAPS OUTSIDE AN URBAN TRAFFIC AREA HAVE A SPEED LIMIT OF 100km/h, UNLESS MARKED WITH A DIFFERENT SPEED LIMIT THIS MAP IS PART OF THE CLUTHA DISTRICT COUNCIL ROADING BYLAW 2008 REFER ALSO TO SCHEDULES 1-8 IN THE BYLAW 	
APPROVED:	PLAN NO.
 _____ Manager, District Assets	CDCSP-2
DATE: _____	Sheet 2 of 2



Contains Data Derived from LINZ's DCDB
Supplied under CDC Digital Licence No. 141228/37
CROWN COPYRIGHT RESERVED

