



Clutha District Directions Community Outcomes

Clutha District Council

Clutha District Directions Community Outcomes Summary Report 2008



Clutha District Council
www.cluthadc.govt.nz

Contents

MESSAGE FROM THE MAYOR.....	2
INTRODUCTION.....	4
KEY TRENDS IN THE CLUTHA DISTRICT	5
OVERVIEW - HIGHLIGHTS AND CHALLENGES	24
OUTCOME 1: WORKING TOWARDS A SAFER AND HEALTHIER COMMUNITY	7
OUTCOME 2: ENSURING OUR ECONOMY GROWS AND DIVERSIFIES	10
OUTCOME 3: MAKING SURE THERE'S PLENTY TO SEE AND DO.....	13
OUTCOME 4: CREATING A SUSTAINABLE ENVIRONMENT THAT'S LIVING UP TO OUR CLEAN, GREEN IMAGE.	15
OUTCOME 5: DEVELOPING AND MAKING THE MOST OF EDUCATION, TRAINING AND LIFELONG LEARNING OPPORTUNITIES.....	17
OUTCOME 6: ENCOURAGING STRONG, POSITIVE AND ENTERPRISING COMMUNITIES	19
OUTCOME 7: PROVIDING THE INFRASTRUCTURE WE NEED TO MOVE FORWARD	22

Contact Details

Clutha District Directions Community Outcomes Report 2008
Clutha District Council
P O Box 25
Balclutha

Telephone: (03) 419 0200
Email: helpdesk@cluthadc.govt.nz
Website: www.cluthadc.govt.nz

Disclaimer

No liability is accepted by Clutha District Council for the accuracy of any information in this report or the consequences of any action taken in the reliance on the information.

Message from the Mayor



Welcome to this Community Outcomes Report, which provides a general overview of how we are performing as a district and shows general trends and states at the current point in time.

Community outcomes are those overarching goals for the district which our communities told us were important during consultation back in 2005. These Community Outcomes are outlined below and this report measures our progress towards achieving those goals.

Council is just one of many organisations that have been working towards these goals, and this report also provides an overview of many of these organisations contributions, and the collaborative approach in making Clutha the kind of place you want to live.

Overall, the report reveals we are performing well on many fronts. There is clearly agreement that the Clutha District is a great place to live, thanks in part to a strong sense of community, low rates of crime and unemployment, resident satisfaction with many core services and access to quality educational and health facilities.

There are, of course, areas where we can continue to improve. We live in a wonderful, natural environment and there is great potential to increase opportunities in tourism here.

From a Council perspective, we are a rural district with a small population and must look at ways to meet requests for improved levels of service without placing an unfair burden on ratepayers.

Juno Hayes
Mayor

District Directions Community Outcomes

Working towards a safer and healthier community

outcome 1

Key areas highlighted during consultation include:

- a) Developing an integrated health care service that delivers the right treatment, by the right person at the right time.
- b) Ensuring safer roads, workplaces, homes, farms, schools and places of recreation.
- c) Reducing crime and the fear of crime.
- d) Promoting and living healthier lifestyles.
- e) Being as prepared as possible for disaster.
- f) Maintaining effective, well funded and supported emergency services.
- g) Recruiting and retaining health professionals.
- h) Reducing alcohol, substance and drug misuse.

PHOTO COURTESY OF CLUTHA HEALTH FIRST

Ensuring our economy grows and diversifies

outcome 2

Key areas highlighted during consultation include:

- a) Maintaining and building on our strong agricultural base.
- b) Improving the availability of skilled and unskilled labour throughout the district.
- c) Sustaining and growing existing local businesses.
- d) Encouraging and promoting new businesses and industry development.
- e) Improving the availability of quality, affordable housing.
- f) Developing tourism opportunities, particularly eco-tourism and heritage tourism.
- g) Reducing compliance costs for businesses.
- h) Developing better transition between seasonal careers.

Making sure there's plenty to see and do

outcome

3

Key areas highlighted during consultation include:

- Maintaining and improving community facilities, such as swimming pools, halls and community centres.
- Developing recreational opportunities for younger people.
- Adapting to the needs of our aging population.
- Making the most of and developing 'great outdoors' opportunities in the district.
- Promoting and supporting local sports, arts, cultural and heritage activities and events.



Creating a sustainable environment that's living up to our clean, green image

outcome

4

Key areas highlighted during consultation include:

- Promoting awareness, appreciation of and involvement in the care of the environment.
- Protecting and conserving natural resources, particularly waterways, streams and rivers.
- Managing and reducing waste, along with zero tolerance for littering and dumping of rubbish.
- Ensuring attractive, well-presented communities and landscapes.
- Protecting and promoting heritage throughout the district.



Developing and making the most of education, training and lifelong learning opportunities

outcome

5

Key areas highlighted during consultation include:

- Ensuring quality educational opportunities for all ages.
- Ensuring access to high quality early childhood education and care.
- Recognising schools as key community focal points that help 'make' our communities, and ensuring they are retained in the future.
- Preparing young people for meaningful employment and helping them find it.
- Ensuring opportunities for community education and lifelong learning.
- Matching people with suitable apprenticeship opportunities.
- Encouraging businesses to invest in their employees by providing opportunities for regular training and upskilling.



Encouraging strong, positive and enterprising communities

outcome

6

Key areas highlighted during consultation include:

- Valuing and supporting the work of volunteers in our community.
- Promoting the district and its communities, both locally and externally.
- Ensuring communities are well-informed and have their say in decisions that affect them.
- Encouraging and developing leadership, particularly for youth.
- Developing and promoting opportunities for our young people to stay in or return to the district.
- Encouraging communities, groups and organisations to collaborate and work together.
- Enhancing pride in ourselves and the community we live in.



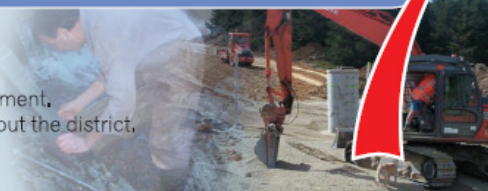
Providing the infrastructure we need to move forward

outcome

7

Key areas highlighted during consultation include:

- Maintaining and improving the roading network.
- Providing infrastructure to support industry and economic development.
- Ensuring effective communication technology is available throughout the district.
- Providing infrastructure to support tourism growth.
- Providing infrastructure to support residential development.



Introduction

What are Community Outcomes?

Community outcomes are overarching goals that describe the type of community we would like over the next ten years. They are a legislative requirement under the Local Government Act 2002.

Effectively they provide a district-wide vision to help guide Council and other organisations plan for and deliver services in the Clutha District.

It is important to point out that making headway towards them depends on you, your community, Council and various government and non-government organisations, both nationally and locally.

District Directions Community Outcomes

In 2005, Council initiated workshops, local community meetings, mail and telephone surveys to ask what would help make our district and community a better place to live, work, play and visit. Upwards of 1,000 responses were received. They were then collated into seven community outcomes for the district, relating to our economic, social, environmental and cultural well-being.

These seven community outcomes are:

- Working towards a safer and healthier community.
- Ensuring our economy grows and diversifies.
- Making sure there's plenty to see and do.
- Creating a sustainable environment that's living up to our clean, green image.
- Developing and making the most of education, training and lifelong learning opportunities.
- Encouraging strong, positive and enterprising communities.
- Providing the infrastructure we need to move forward.

A further 42 underlying sub outcomes were also identified to help highlight some of the key aspects of each of the main outcomes.

Monitoring Community Outcomes

Under the Local Government Act 2002, Council is also required to monitor progress towards the community outcomes.

This Clutha District Directions Community Outcomes Report 2008 provides a general overview of how well we are going towards the community outcomes, showing general trends. It gives an opportunity to measure how far we have come and highlight areas we need to focus on. With this information Council and the community can make more informed decisions by giving an understanding of the needs and priorities for the district's community.

The report uses indicators relating to each of the seven outcome areas. They have been collated from a variety of sources that provide data on the Clutha District and Otago region, including:

- Clutha District Council Resident Surveys
- Police administrative data.
- Land Transport New Zealand administrative data.
- Clutha District Council administrative data.
- Otago Regional Council data.
- Statistics New Zealand Census and other data.
- Work and Income administrative data.
- Ministry of Education administrative data.

Note: This report is a summary of information. More detailed background information for each indicator is available on request.

Key Trends in the Clutha District

The trends and states of the Clutha District are summarised in the following table.

Key

State	Trend
☺ Good/Satisfactory	↑ Improving/favourable
☹ Mixed/Uncertain	↓ Declining/unfavourable
⊖ Unsatisfactory	⇒ No significant trend
	? Uncertain, i.e., no trend data available

	Indicator	State	Trend
1.	Working towards a safer and Healthier Community		
	Life Expectancy	☺	↑
	Perception of Safety	☺	?
	Reported Offences	☺	↑
	Perception of available recreation opportunities	☺	?
	Perception of the level of sporting goods and opportunities	☺	?
	Death Rates	☹	↓
	Access to GP's/Doctors	☹	⇒
	Volunteer Fire Brigade	☹	?
	St John emergency services	☹	?
	Crash Statistics	⊖	?
	ACC Claims for workplace injuries	⊖	↓
	ACC Entitlement Claims	⊖	↓
	Residents prepared for a disaster	⊖	↓
2.	Ensuring our economy grows and diversifies		
	Employee numbers by industry	☺	↑
	Number of business locations in the Clutha District	☺	↑
	Home Ownership	☺	↑
	Proportion of population living in crowded housing	☺	↑
	Unemployment	☺	↑
	Deprivation Index	☹	?
	Household Expenditure	☹	?
	Accommodation Guest Nights	☹	⇒
	Total and median personal income	☹	↑
	Population on low income	☹	↓
	Change to number of agricultural units	☹	⇒
3.	Making sure there's plenty to see and do		
	Resident satisfaction with community centres or halls	☺	↑
	Resident satisfaction with recreational opportunities	☺	↑
	Resident satisfaction with sporting facilities and opportunities	☺	↑
	Resident satisfaction with swimming pools	⊖	↓
	Swimming Pools - Visitor Numbers	⊖	↓
4.	Creating a sustainable environment that's living up to our clean, green image		
	Resident sense of pride for the way their area or local town looks	☺	↑
	Amount of Waste to Mt Cooee	☹	⇒
	Registered and protected Historic Places	☹	?
	Water Quality in the Clutha Catchment	⊖	?

5.	Developing and making the most of education, training and lifelong learning opportunities		
	Participation in early childhood education	☺	↑
	Education levels of 25 - 64 year olds in the Clutha District	☺	↑
	Modern Apprenticeships and Industry Trainees in the Clutha District	☺	↑
	Availability of early childhood education and care services	☹	?
	Educational attainment of the adult population	☹	?
	School leavers with higher qualifications	☹	↓
6.	Encouraging strong, positive and enterprising communities		
	Unpaid Work	☺	↑
	Assistance to community groups	☺	↑
	'Clutha Country - where everyone says hello'	☺	↑
	Sense of community	☺	↑
	Sense of pride for the way my area or local town looks	☺	↑
	The Clutha District is a great place to live	☺	↑
	Those who see or read the council newsletter	☺	↑
	Satisfaction with the performance of the Council	☺	↑
	Satisfaction with decision making, planning and leadership of Mayor and Councillors	☺	↑
	School leavers residing in the Clutha District	☹	?
	Voter turnout at local body elections	☹	↓
7.	Providing the infrastructure we need to move forward		
	Length or roads strengthened and widened, length of reseals, length of seal extensions	☺	?
	Telephone and internet access	☺	↑
	Value of residential building consents	☺	↑
	Resident satisfaction with local roads	☹	?

Outcome 1: Working towards a safer and healthier community

Why is this important?

Being safe and healthy is important to the social wellbeing of a community. It encompasses those aspects of life that are important for a person's happiness, quality of life and welfare.

How are we doing?

Health

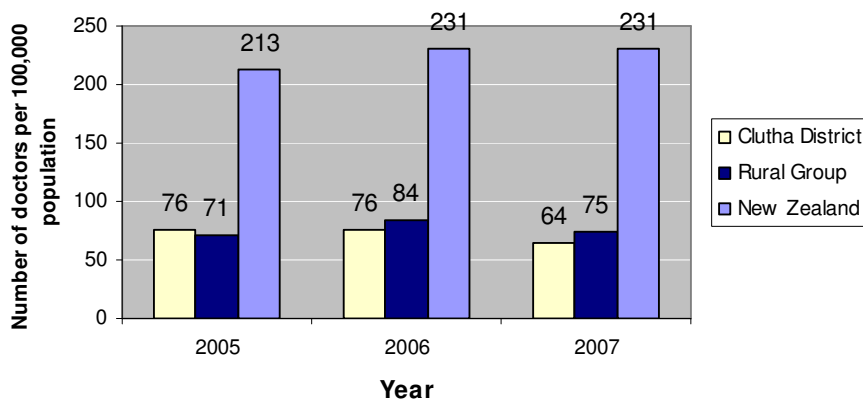
Developing an integrated health care service that delivers the right treatment by the right person at the right time was highlighted during consultation. Recruiting and retaining health professionals in the Clutha District was also highlighted as an important issue.

Initiatives in the Clutha District that are being implemented include:

- The Primary Health Care Organisation (PHO) working from facilities in the hospital;
- Clutha Health First purchasing Balclutha General Practises Ltd;
- Referral of chronic patients to District Nurses; and
- Investigations towards an expansion of facilities in West Otago.

The Medical Council of New Zealand's annual workforce survey indicates the ratio of doctors available per person in the Clutha District is low in comparison to the New Zealand average. But when compared to the 'rural group' (peer group of the Clutha District) figures are shown to be typical of a less populated territorial authority area.

Access to Doctors



Several initiatives are underway to assist recruiting and retaining health professionals to our district.

1. Developing attractive salary packages (which can comprise of housing, vehicles and bonuses) is one example.
2. Another is a new PHO role created to assist in the recruitment process for hospitals and General Practitioners in South Otago.
3. Balclutha has also recently joined up to the Pilot Rural Medical Immersion Programme in General Practice. This is a pilot programme in which fifth year medical students spend their entire year of

study working in rural communities. We currently have three medical students in the Clutha District working in Milton and Lawrence. It is hoped that these students will stay on in the Clutha District once they have completed their studies.

Disaster Preparedness

Civil Defence emergency preparation is essential, so that people can take action to look after themselves, their families and better deal with the impact of a disaster.

The Clutha District Council Resident Survey 2007 asked whether respondents had taken steps to prepare for a Civil Defence emergency. Forty one percent confirmed that they had where as 59% were not prepared. This indicates that many residents in the Clutha District may still be unprepared in the event of a Civil Defence Emergency.

Emergency Services

Emergency services in the Clutha District, such as St Johns and the Fire Brigade, rely heavily on volunteers. In 2007, 194 volunteers manned the 12 fire brigade stations throughout the Clutha District. Currently fire stations are located in Balclutha, Clinton, Clutha Valley, Heriot, Kaitangata, Kaka Point, Lawrence, Milton, Owaka, Tapanui, Waitahuna and Waiwera South.

St Johns have implemented a number of programmes working towards a safer and healthier community. There is a youth division that has been built up over six years in the Clutha District. The youth division learn

First Aid and go on to take part in regional and national competitions in New Zealand. Safekids is another programme which involves a trained first aid person going to pre-schools and primary schools to teach first aid to the children at their level. St Johns also promotes the 'Every Day First Aid' course which aims to have a First Aider in every household.

Accidents

Safety contributes to people's overall quality of life and sense of wellbeing. On Clutha District roads between 2003 and 2007 Land Transport New Zealand reported 97 crashes per 100 million

vehicle kilometres travelled (VKT) per 10,000 population on local roads, and 67 crashes on state highways per 100 million VKT per 10,000 population. Compared with its peer group, Clutha has a higher crash rate. But we do need to keep in mind the local roading data for this period is insufficient, so there is a question of accuracy with the local roading figures.

The number of ACC entitlement claims is another measure of safety. In the 2006/07 year there were a total of 623 ACC entitlement claims in the district. The majority of those claims were work-related (342 claims) and 169 claims happened at home. In the

2007/08 year the total number of ACC entitlement claims increased to 650. The categories that saw the increases were the number of claims at home, on the farm and sports related claims.

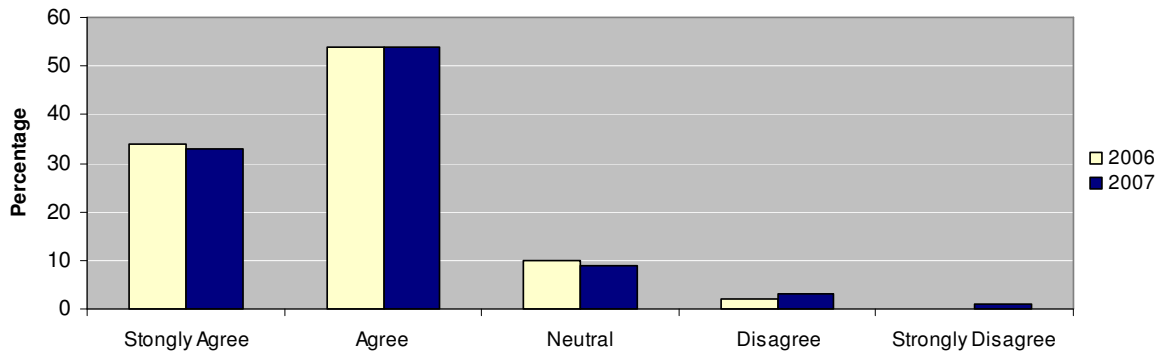
figure has decreased significantly since 2004-05 where 1,139 offences were reported.

According to results from the Clutha District Council Resident Survey 2007, 87% of respondents agreed that the Clutha District is a safe place to live, with 33% strongly agreeing. These results confirm the popular held belief that people here feel the district is a safe place to live.

Crime and Safety

In the 2006-07 year, 908 offences were reported in the district. The majority were dishonesty offences, followed by disorder then damage offences. This

Residents Perception of the Clutha District as a Safe Place to Live



What else is being done?

Key initiatives that contribute to working towards a safer and healthier community in the district include:

- Clutha District Council Emergency Response Plans
- Balclutha Community Patrol
- Clutha District Physical Activity Strategy
- Sports Clutha Coordinator
- Community Wellness Programme

Lead Partners

- New Zealand Police
- New Zealand Transport Agency
- Ministry of Health
- Sport Clutha/Otago
- Clutha District Council
- New Zealand Fire Service
- St John
- Sport and Recreation New Zealand (SPARC)
- Otago District Health Board
- Otago Southland Regional Primary Health Organisation
- Clutha Health Inc.
- Positively Clutha Women
- Public Health South
- West Otago Health Ltd

Community Profile – Wellness Programme

Issues ranging from stress relief and blood pressure checks to tai chi and chainsaw safety have been covered as part of the Clutha District Community Wellness programme.

The Wellness Programme is a partnership between Clutha Health Inc and Positively Clutha Women. Its monthly programmes are designed to offer residents a range of activities with a health-related focus.

An average of 5.5 health seminars per month were held from February to November 2007 on a range of different topics. Seminars generally lasted about 45 minutes with a speaker and time for questions and one-on-one time with the speaker following the main event. During 2007, almost 1500 people took part in the various events, seminars and activities on offer, including some more informal activities encouraging people to either get involved with new physical activities or become more aware of their own health and wellbeing. Free blood pressure and blood sugar tests at a health stand at the Farmarama in Lawrence in February 2007 is an especially successful example of this.

To the end of May 2008, a further 23 workshops had been held, covering topics including autism, breast cancer awareness, coping with grief, mole mapping, and mental health support just to name a few.

Other positive outcomes from the programme include the formation of a Brain Injury support group, regular visits to the area by Disability Services and the Women's Health Expo becoming an annual event. Working in with other groups and associations has proved very beneficial and utilises their resources and time, rather than relying on local health professionals who are often extremely busy.

The close links the Community Wellness programme has made with Sport Clutha have been particularly valuable. This has enabled information on Sport Clutha's 'Get Going' and 'Push Play' programmes to be distributed and promoted throughout the district in a very cost-effective manner.



COACHES CLUB
Thursday 11th September 7.30pm
Rosebank Lodge, Balclutha
Supper \$5.00
Speaker - Kereyn Smith
 Current: CEO NZ Academy of Sport - South Island,
 Vice president International Netball Federation Ltd,
 Trustee Carisbrook Stadium Trust,
 Former: General Manager Hillary Commission for Sport,
 Secretary to the Minister of Sport John Banks,
 and SOHS head girl
*Born and bred in South Otago, Kereyn has a
 wealth of knowledge about national and
 international sport.*
 This evening is open to anyone with
 an interest in sport
 Please register numbers for catering purposes
 with Tiny phone 03 418 3046

★ ★ ★

— COMING —

**SCHOOL HOLIDAY FUN
 POOL PARTY**
 Wednesday 1st October
 1-3pm Balclutha Centennial Pool
 In conjunction with Sport Clutha, MoreFM Big River Radio
 and Clutha District Council



★ ★ ★

PUSH PLAY
 30 MINUTES A DAY
 For further details contact Tiny
 03 418 3046 or go to www.sportotago.co.nz

**LEARN A NEW SKILL,
 IT CAN IMPROVE YOUR CONFIDENCE**
**SEPTEMBER ADULT &
 COMMUNITY CLASSES**
South Otago High School
**To register phone ACE office
 03 418 3682**

Limestone Carving
 Stone provided, you don't even need to be arty
Sunday 21st September
10.00am-3.00pm Cost \$35

Good Food Simply Made
 Tips for busy families on quick tasty meals, party food,
 and the secrets of presentation - 2 day course Cost \$40
Saturday 6th & Saturday 20th
September 9.00am-4.00pm

Digital Photography
 Settings, functions, lighting editing, storing photos and
 more - 2 day course Cost \$50
Saturday 13th & Saturday 20th
September 10.00am-4.00pm

**South Island Secondary School Girls
 SOCCER TOURNAMENT**
Balclutha Showgrounds
Monday 1st - Thursday 4th September



Support the teams and
 watch some of the action
 Games each day
 from 10.00am-2.00pm

For more details on any of the information in this flyer please call:
 Positively Clutha Women phone 03 418 4048
 or Balclutha Info Centre phone 03 418 0388



**CLUTHA DISTRICT
 COMMUNITY
 WELLNESS
 PROGRAMME**
SEPTEMBER 2008

THIS MONTH

- Adult & Community Classes
- Age Concern Otago — Abuse & Neglect
- Cervical Screening
- Coaches Club - Kereyn Smith speaks
- Cystic Fibrosis Awareness
- Diabetes Footcare Clinic
- Hearing Specialist
- Nurses - Update your Registration — DISTRICT WIDE
- School Holidays - Pool Party
- Singing — Have a go
- South Island Girls Soccer Tournament




Outcome 2: Ensuring our economy grows and diversifies

Why is this important?

Economic development is essential to our prosperity and quality of life. A strong agricultural base, strong businesses, availability of skilled and unskilled labour, quality and affordable housing and tourism are very important to the economic well-being of the Clutha District.

How are we doing?

Business and Industry

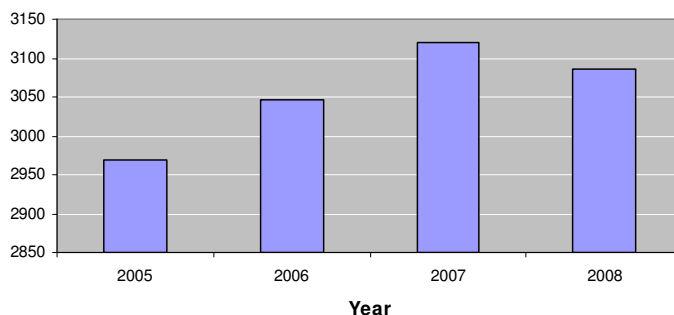
Statistics New Zealand Business statistics recorded that a total of 8,600 employees worked in the Clutha District as at February 2008. The largest industry is the agriculture, forestry and fishing industry employing 34.4% of employees in the Clutha District. The manufacturing industry was the second largest employer in the Clutha District with a total of 1,790 employees followed by the retail sector employing 660 people. The largest employment increase between 2005 and 2008 was in the construction industry followed by education and training.

The increase of employment in the construction industry between 2005 and 2008 can be partly attributed to the construction of the Otago Regional Corrections Facility which opened in 2007. There were a number of economic benefits to the Clutha area and the wider Otago region during both the construction phase and the current running of the Otago Regional Corrections Facility. These benefits included increased employment and an increased need for goods and services.

In 2008, agriculture, forestry and fishing accounted for 52.5% of the total industry in the Clutha District. Statistics indicate that our agricultural industry remains relatively steady in terms of both the number of business locations and number of employees. However, figures show that a gradual shift from sheep, beef cattle and grain farming to dairy farming is starting to emerge.

The industry that has increased the most since 2005 has been the rental, hiring and real estate services industry.

Number of Business Locations in the Clutha District



Figures indicate that between 2005 and 2008 the total number of business locations by industry in the Clutha District has increased by over 100.

Socio-Economic Status

The New Zealand Deprivation Index is a measure of socio-economic status calculated for each town or area. It is calculated using a range of variables such as income, qualifications, telephone access, access to a car, level of home ownership and household occupancy rates.

Once all variables are calculated, the index is then measured on a scale of one to ten. One indicates a least deprived area and 10 indicates a most deprived area.

The following are the decile scores for each community in the Clutha District:

Census Area Unit	Decile	Value
BRUCE	3	934
CLUTHA	3	996
Tuapeka	3	930
Stirling	3	938
Kaka Point	5	964
Balclutha	6	976
Tapanui	6	984
Owaka	6	996
Lawrence	7	1012
Kaitangata	7	1020
Benhar	8	1027
Clinton	8	1041
Milton	8	1042

Overall the Clutha District achieved a 3 on the NZ Deprivation 2006 index. This is a relatively low deprivation score.

Unemployment

Unemployment figures are an important indicator to determine the health of the economy. In 2006 just 2.2% of the district's population were officially unemployed. This is well below the national figure of 3.6%.

Income

Median personal income and income bands mark our economic prosperity and determines a person's standard of living. In the Clutha District median personal income increased to \$23,300 in 2006 from \$14,400 in 1996, a rise of 61.8% over a 10 year period. In comparison, the overall New Zealand median personal income increased 56.4% to \$24,400. Thus, even though the Clutha District's personal median income has increased significantly

over the last 10 years, it is still slightly behind the national average.

Proportionally the income band with the biggest increase between 1996 and 2006 was the \$30,001 - \$50,000 band. In 2006, 26% of people aged 15 years and over were in this band where as in 1996, only 13.9% were in this income band. The biggest decrease was for the \$5001 - \$10,000 income band. In 1996, 17.5% of people were in this band compared to 7.9% in 2006.

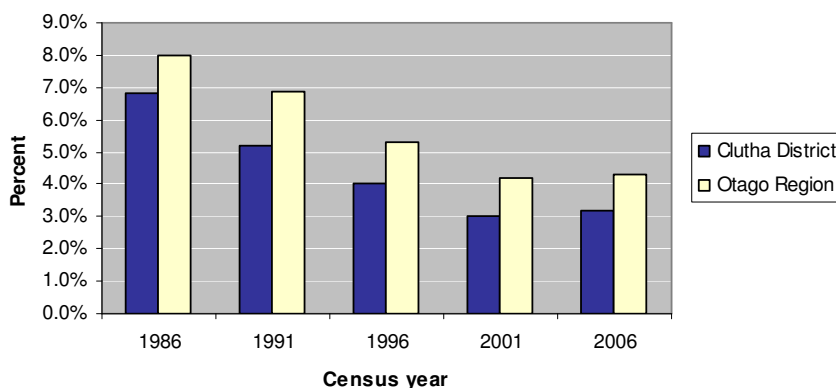
According to the 2008 Social Report, 20.5% of the population in the Clutha District are classed as low income earners. This figure has decreased since 1996 where 27.7% of the population were earning low incomes.

Housing

Improving the availability of quality, affordable housing was highlighted as a key issue in helping to ensure our economy grows and diversifies. The level of home ownership and household expenditure determines people's ability to buy their own homes. The level of home ownership in the Clutha district is 68%. This figure has declined from 73% in 2001 yet it is above the national figure of 63%.

Household crowding is an indicator of quality housing and looking at the 2008 Social Report, the proportion of the Clutha District's population living in crowded households is 3.2%. The Otago region along with Southland and the West Coast has the least amount of household crowding compared with other regions in New Zealand.

Proportion of population living in crowded households

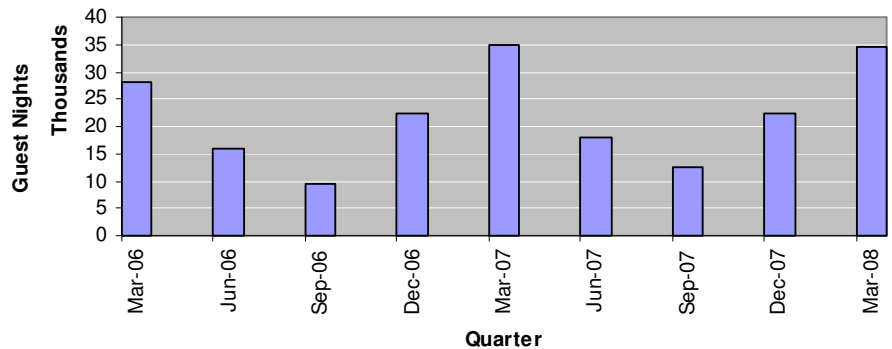


Tourism

Developing tourism opportunities, particularly in the eco-tourism and heritage tourism areas in the Clutha District, is seen as an important aspect in assisting our economy to grow and diversify.

Accommodation guest nights are an indication of how many visitors/tourists are staying in the Clutha District. The Statistics New Zealand Quarterly Review records that the total number of guest nights in the Clutha District in the March 2008 quarter was 34,419 compared with 34,936 for the March 2007 quarter. The occupancy rate is 19.4 percent lower than that of the national occupancy rate.

Guest nights - Clutha District



These figures indicate that there is potential for the Clutha District to develop and market its tourism opportunities to gain greater economic benefit for the district.

District Development Board

The District Development Board is a key initiative that aims to promote economic growth and diversity in the Clutha District. The Board is a committee of the Clutha District Council and among other initiatives aims to promote development in rural activities (agriculture, horticulture, floriculture, forestry), business, tourism and other areas such as education and community services. The goals of the Board are to retain the existing industry and employment base, encourage additional output from existing industry, promote new business development and employment creation, encourage co-operation and co-ordination within sectors, identify resources and opportunities, increase levels of business confidence and promote the entrepreneurial element in the District.

What else is being done?

Key initiatives that contribute to working towards ensuring our economy grows and diversifies:

- Wind energy exploration and development, including the TrustPower wind farm north of Mahinerangi
- DairyNZ On Farm Innovation Project
- Proposed Clutha District Labour Strategy
- Clutha Country branding

Lead Partners

- Clutha Agricultural Development Board
- Clydevale Clinton Quality Employers Group
- DairyNZ
- Enterprise Clutha
- Otago Chamber of Commerce
- Otago Forward
- Ministry for Agriculture and Fisheries
- Department of Labour
- Positively Clutha Women
- Heartland Services
- District Development Board
- Southern Wood Council
- Clutha Sheep Council
- Clutha District Council
- New Zealand Trade and Enterprise
- Ministry of Social Development

DairyNZ On-Farm Innovation Project



The Clydevale Clinton Quality Employers Group has teamed up with the Clutha Agricultural Development Board to create a 'Beginner's Guide' to setting up an employment group of dairy farmers – a project funded by the DairyNZ On-Farm Innovation Fund.

The guide is intended to give practical step-by-step instructions to keen individuals as to how to set up a community group which will work together at building quality into their employment relationships and practices. It has been written specifically for dairy farmers in New Zealand and works from the current labour market climate of low unemployment and high workplace expectations.

The Beginners Guide has been formed by the last five years' experience of the Clydevale Clinton Quality Employers Group – a group of like-minded dairy farm owners and operators trying to meet the challenges of the current and likely future labour market in New Zealand.

With this group, Clutha is leading the way towards well-organised, co-operative workplaces. The authors believe there is a competitive advantage to be had by the dairy industry and an economic and social benefit to individual businesses if more of these community-based groups can be encouraged to promote quality employer-employee relationships on dairy farms throughout the country.

Outcome 3: Making sure there's plenty to see and do

Why is this important?

Making sure there is plenty to do and see in the Clutha District is important for our overall well-being. It is essential to our quality of life, our identity and our sense of place.

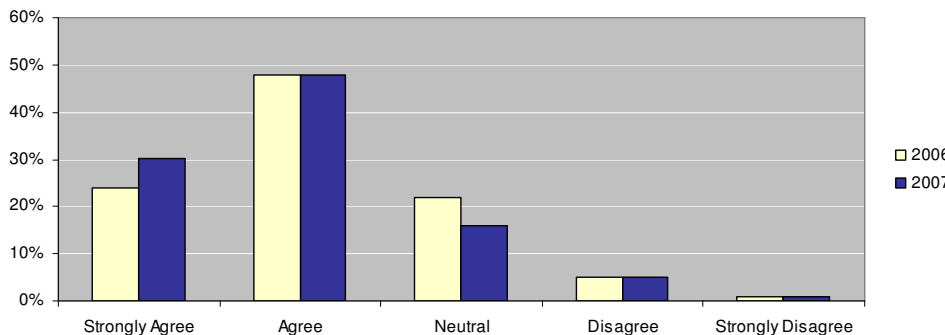
This outcome also lies at the heart of a healthy society, contributing to the development of a community along with economic outcomes through the likes of local tourism businesses, environmental outcomes through such things as heritage sites - for example the revitalisation of Gabriel's Gully in Lawrence and social outcomes through fostering community engagement and participation.

How are we doing?

Recreation

Recreation is an important component of our personal health, quality of life and our ability to build strong families and communities. The Clutha District Council Resident Survey asks recipients whether they think there are good recreation opportunities in the Clutha District. In 2007, 81% of respondents agreed that there were. Seventy eight percent also agreed that there are good sporting facilities and opportunities in the Clutha District.

The Clutha District has Good Sporting Facilities



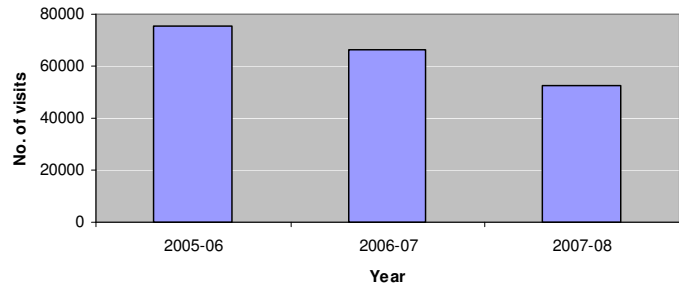
In October 2006, Sport Clutha was formed and a sports coordinator was appointed to tackle the sport and physical activity needs of the Clutha District. Refer to the article over the page.

Facilities

Maintaining and improving facilities is essential to the availability of recreational opportunities. According to results from the Clutha District Council Resident Survey, 84% of respondents were satisfied or very satisfied with community centres and halls in the Clutha District and 70% of respondents had used community halls and centres in the last 12 months.

Council is responsible for the maintenance and running of four pools in the district including the Balclutha, Milton, Kaitangata and Lawrence pools. There are several other school and community-based pools in the district that receive small grants from Council. According to results from the Resident Survey 2007, 40% of respondents indicated that they had used or visited local swimming pools in the last 12 months. Of these respondents 60% were either satisfied or very satisfied. However a large percentage of respondents (20%) were dissatisfied with the swimming pool facilities citing heating concerns, upgrade requirements and opening times as the main issues. This is reflected in declining numbers of people going to the swimming pools over the last three years.

Number of visits to Balclutha, Milton, Lawrence and Kaitangata Swimming Pools



There were 52,824 visits in the 2007-08 year to the main pools in the district. This number has decreased significantly from 2005-06 where 75,264 visits to the pools were recorded.

Sport

Sport has a big part to play in the Clutha District all year round from rugby and netball in the winter to tennis, cricket and Touch 7's in the summer to name but a few. Sport is part of our identity in the Clutha District so having good sporting facilities and opportunities is important.

The 2007 Clutha District Council Resident Survey asked whether the Clutha District has good sporting facilities and opportunities and 78% of respondents either agreed or strongly agreed with the statement. The number of respondents who strongly agreed with the statement had increased by 6% from the 2006 survey period. This in part could be attributed to the establishment of Sport Clutha and our Sport Clutha Coordinator who was appointed in October 2006.

What else is being done?

Key initiatives that contribute to making sure there is plenty to see and do in the Clutha District are:

- SPARC Rural Travel Fund
- Christmas Decorations
- Clutha Country website
- Community Directory
- Community Calendar
- Lawrence 2011 celebrations and revitalisation of Gabriel's Gully

Lead Partners

- Sport Clutha/Otago
- Clutha Licensing Trust
- Community Trust of Otago
- Community Trust of Southland
- Otago Southern Region Primary Health Organisation
- Sport Clutha
- Clutha District Council
- Swimming Pools
- Community Hall committees
- Sport and Recreation New Zealand (SPARC)

Sport Clutha Coordinator

Sport Clutha is a partnership between Sport Otago, Clutha District Council, the Clutha Licensing Trust, the Community Trust of Otago, and the Otago Southern Region Primary Health Organisation.

It was established in October 2006 and local sporting identity Kelvin 'Tiny' Carruthers was appointed to the role of Sport Clutha Coordinator to tackle the sport and physical activity needs of the Clutha District and coordinate access to the range of services available through Sport Otago.

One of Tiny's core roles is to support local sport. He does this by offering leadership and expertise, and training courses to coaches, officials and administrators. These valued members of our community also gain support and motivation by joining the 'Coaches Club', where prominent sport coaches and administrators speak to locals.

Sport Clutha also works closely with schools. Ultimately its aim is to improve children's fundamental skills and achieves this by bringing expert coaches into schools to upskill teachers.

Children also love to challenge themselves against their peers and Sport Clutha gives them this opportunity through tournament play. This winter, 22 teams participated in its Year 7 & 8 hockey tournament, while the South Island Secondary School Girls Soccer Tournament was also recently held in Balclutha. This was a huge challenge for the organising committee but the whole community pulled together to produce a very professional and successful tournament. Travelling teams were complimentary about the tournament and the friendliness of the locals.

Tiny believes our district's greatest resource is the 'great outdoors', and consequently Sport Clutha organises various other events in towns throughout the district, encouraging people to get out and about as well as being active. Sport Clutha is responsible for running the 'Clutha Country Summer Series', holiday programmes, 'The Mayoral Bike Challenge', Sport Clutha Walks and 'Push Play' events. Sport Clutha also plays its part in events such as the 'Rosebank Half Marathon' and the 'Big River Festival Duathlon', and even organises surfing coaches to encourage people onto the waves. Some of the most enjoyable projects undertaken by Sport Clutha involve assisting other groups to run events.

Projects for the future include a liaison with the police to develop a biking programme and a bike tour with Tourism Catlins. Tiny's work is proving highly successful in addressing the sport and recreation needs of the district, and Sport Clutha's results to date have received very favourable feedback from key stakeholders and community groups.



Sport Clutha Coordinator Tiny Carruthers puts Waitahuna School pupils through their paces

Outcome 4: Creating a sustainable environment that's living up to our clean, green image

Why is this important?

Creating a sustainable environment that's living up to our clean green image is important to retaining the natural beauty and environmental well-being of the Clutha District for current and future generations. Farmlands, forestry, beaches and rivers are a huge part of what the Clutha District is made up of. It is important to our quality of life in terms of health and recreation, our economic well-being in terms of income and tourism and to our cultural identity in terms of what defines the Clutha District.

How are we doing?

Water Quality

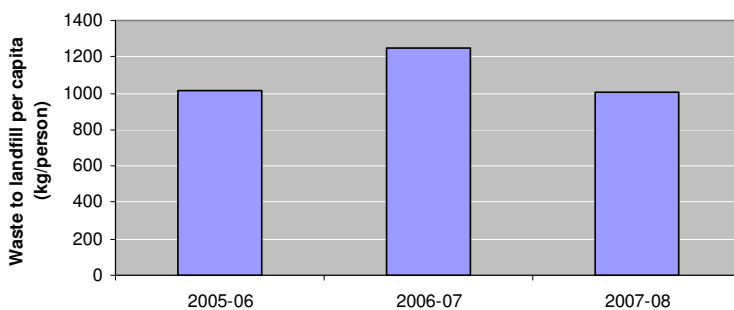
Protecting and conserving natural resources such as waterways, streams and rivers is important to our environmental wellbeing as well as our health and quality of life.

The E.coli level is one of the most significant indications of water quality. According to the Clutha River Annual Monitoring Summary 2006-2007 produced by the Otago Regional Council, the levels of E.Coli are quite high in the Pomahaka and the Lower Clutha tributaries of the Clutha Catchment. This is a sign that the level of water quality is poor in these areas.

Waste

Managing and reducing waste in the Clutha District is also an important outcome that will contribute to creating a sustainable environment. An indicator to see how we are going at managing and reducing waste is measuring the amount of waste going into Mt Cooe landfill. Figures over the last three years indicate that the amount of waste being disposed of is not improving. 17,602 tonnes of waste was disposed of in 2005-06 and this figure slightly reduced to 16,942 tonnes in 2007-08. On average, the amount of waste per capita in 2007-08 was 1,006 kg's. Recycling was identified as an improvement for the district and Council is currently looking at options and initiatives that will help to reduce the amount of waste.

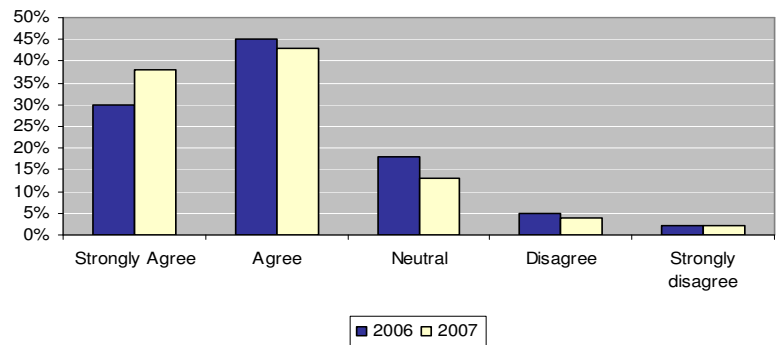
Per Capita Volume of Waste to Mt Cooe Landfill



District Appearance

The Clutha District Council Resident Survey 2007 asked respondents whether they agreed with the statement 'I have a sense of pride for the way my area or local town looks'. This is an indication of how people feel about their area and town which contributes to how they may impact on the environment. Eighty one percent of respondents strongly agreed or agreed with this statement, 13% were neutral and 6% disagreed. The number of respondents who strongly agreed with the statement increased from 30% in 2006 to 38% in 2007.

Sense of Pride (For the way my area looks)



Heritage

Protecting and promoting heritage is another way in which we can create a sustainable environment in the Clutha District. A measure of how we are going is the Historic Places Trust register. The register keeps a record of all heritage places to assist the protection of these places under the Resource Management Act 1991. The Clutha District has a total of 62 buildings and sites that are listed on the Historic Places Trust. Lawrence has the most number of buildings registered due to the discovery of gold in the 1860's. There are three items that are currently proposed for registration which are St Patricks Church in Lawrence, Gabriels Gully in Lawrence and Tokomairiro Church in Milton.

In 2006 the Clutha District Council proposed to make changes to the Clutha District Plan to give effect to a Lawrence Heritage Precinct proposal. This proposal was requested by some of the community in Lawrence but failed to come into fruition due to opposition from those who it would directly effect, namely property owners and businesses within the precinct boundaries. They felt that the proposal would be too restrictive on them and also that there would be unnecessary involvement from the Historic Places Trust. Those who opposed do, however, recognise the importance of Lawrence retaining its character and even though the precinct did not become part of the District Plan, the proposal highlighted the value of heritage in Lawrence.

What else is being done?

Key initiatives that contribute to creating a sustainable environment that's living up to our clean green image are:

- Sewerage Effluent disposal upgrades
- Recycling proposals

Lead Partners

- Clutha District Council
- Clutha Agricultural Development Board
- Otago Regional Council
- Ministry of Agriculture and Forestry
- Foundation for Arable Research
- Foundation for Research, Science and Technology
- Environment Southland
- Horizons Regional Council
- Californian Thistle Action Group
- Historic Places Trust

Californian Thistle Biocontrol Initiative



In November 2007, 50 green thistle beetles were released onto a Waitahuna West farm (pictured left), launching a New Zealand-wide programme with the ambition of combating the invasive Californian thistle which is estimated to cost New Zealand farmers millions of dollars each year.

The project is a partnership between the Californian Thistle Action Group (CalTAG) and the Clutha Agricultural Development Board – a local farmer-owned and controlled body contracted by Council to promote good practice and opportunities in farming.

Since the Waitahuna West farm release, the Californian Thistle initiative has seen six further 'nursery' release sites in the Clutha, Southland and Horizons Regional Council (Wanganui) areas. Up to eight further nursery sites will be established in Clutha during 2008/09. CalTAG has been working for over 10 years on controlling the Cali

thistle, which is considered the country's most invasive and damaging weed for pastoral farmers. Survey estimates of the costs to farmers range up to \$200 million a year through sprays, tractor time and loss of pasture area.

The green thistle beetle attacks young tender leaves, causing defoliation and a reduction of thistle vigour. Prior to release, the thistle beetle was thoroughly tested by Landcare Research and received Environmental Risk Management Authority approval for importation and release.

If successful, this project has the potential to save farmers a significant amount of money.

The project has received substantial support from the Ministry of Agriculture and Forestry's Sustainable Farming Fund, and also from the Foundation for Arable Research, the Foundation for Research, Science and Technology, the Clutha District Council, Environment Southland and Horizons Regional Council.

Outcome 5: Developing and making the most of education, training and lifelong learning opportunities

Why is this important?

Education, training and lifelong learning opportunities are fundamental to our social wellbeing and are important for closing the gap of our social and economic inequalities.

How are we doing?

Early Education

The Clutha District has 21 early childhood education centres including eight Education and Care centres, nine playcentres, three kindergartens and one homebased childcare. In 2007, 90% of 3 and 4 year olds in the Clutha District were enrolled in early childhood education programmes. Overall attendance at Clutha District's early childhood education centres is estimated at approximately 722 children. Rates of participation in the Clutha District are consistently lower than all other areas in the Otago region, however they are still very high.

Primary and Secondary Education

For school age young people, the district provides access to 17 primary schools, two area schools and three high schools.

According to the Social Report 2008, the Clutha District has the lowest percentage of students leaving school with NCEA Level 2 or higher in the Otago region. In 2007, 64% of school leavers had achieved NCEA Level 2 or higher. This figure has decreased by 6% since 2006 indicating there is need for improvement.

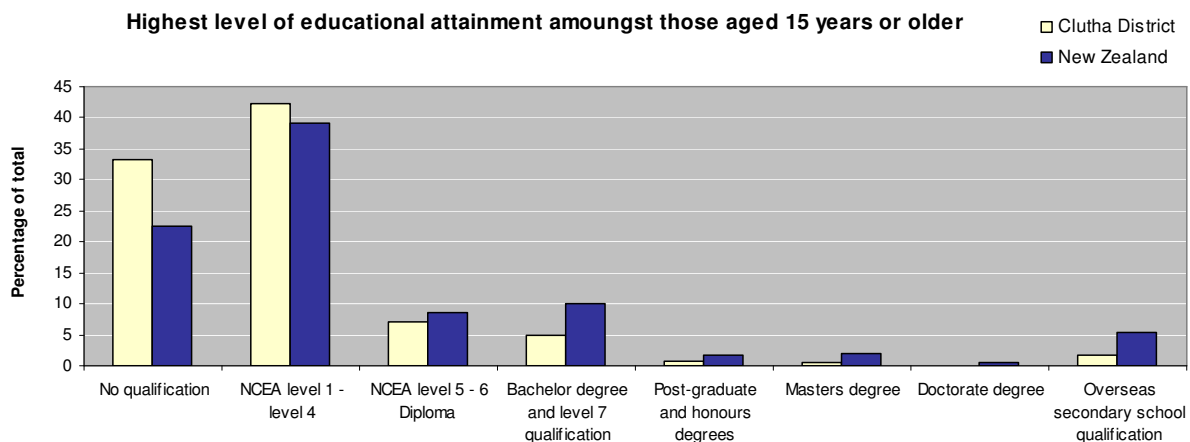
Tertiary Education

The 2006 Census showed that the percentage of the Clutha District adult population who have no educational qualifications is above that of the national average. Thirty three percent have no qualifications compared with the national average of 22%. For 44% of the adult population, the highest qualification held was NCEA level 1 compared to the national average of 39%. 4.9% responded that a Bachelor degree and level 7 qualification as their highest level of achievement and 1.3% of the adult population had achieved a qualification higher than a Bachelor degree and level 7 qualification.

However, figures from the Social Report 2008 show that the levels of education of 25 - 64 year olds in the Clutha District has increased steadily from 47.6% in 1986 to 66.9% in 2006.

Apprenticeships

The number of modern apprenticeships and industry trainees in the district is another indicator of developing and making the most of education, training and lifelong opportunities. Figures from the Tertiary Education Commission show that there has been an increase in both of these areas since 2006. There were 34 modern apprenticeships as at December 2006 and this had increased in June 2008 to 51. Industry trainees had increased from 766 in 2006 to 916 in 2008.



What else is being done?

Key initiatives that contribute to developing and making the most of education, training and lifelong learning opportunities in the Clutha District are:

- Four Trades Programme
- Youth Development Coordinator
- Tuapeka Bursary
- Telford Bursary
- Clutha Health Scholarships

Lead Partners

- Agriculture ITO
- Enterprise Clutha
- Early Childhood Education Centres
- Mayor's Taskforce for Jobs
- 'Workin' it Out'
- Ministry of Education
- Schools
- Clutha District Council
- Tertiary Education Commission
- Work and Income
- Enterprise Clutha
- Clutha District Youth Council
- Telford Rural Polytechnic
- Clutha Health Inc

Youth Development

The Clutha District's first ever Youth Councillors were sworn into office at the Inaugural Meeting of the Clutha District Youth Council held on 3 March 2008 (pictured right). The Youth Council includes two youth from each of the district's five secondary schools as well as two youth from the wider workplace. It has been established as a Standing Committee of the full Council, which enables it to regularly report to and make recommendations to the full Council.

As well as acting as a consultative link between young people and Council, the Youth Council encourages youth involvement in the planning and development of Council services and provides a forum where young people's views can be heard.

Participation in the Youth Council also provides members with exposure to the local government political environment, and enables them to develop their own leadership skills.

Council's support of youth development also includes funding towards the 'Making a Difference with Mazey' programme, facilitated by Youth Development Coordinator Daniel Maze out of Enterprise Clutha. The programme, for 12-24 year-olds, is designed to develop and enhance values and self-esteem, build positive attitudes, recognise young peoples' abilities, develop attributes needed to be successful, enhance work-based skills and career opportunities, and generate pride and community ownership. Part of this programme, includes a leadership programme where Daniel is working with a group of South Otago High School students to establish a Youth Centre in Balclutha.

Enterprise Clutha's numerous other youth initiatives also include, but are not limited to, an Introduction to Careers programme for Year 7 and 8; employment coaching for young people; the promotion of apprenticeships through the 4Trades Apprenticeship Training Trust; and the facilitation of local youth forums.



Outcome 6: Encouraging strong, positive and enterprising communities

Why is this important?

Strong, positive and enterprising communities are important to our wellbeing and identity as an individual and a community.

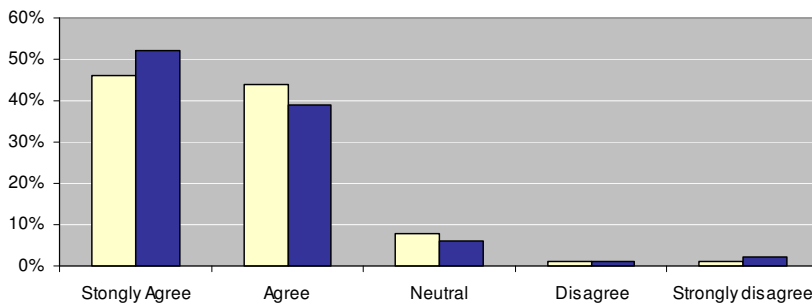
How are we doing?

Sense of community

Sense of community, sense of pride for how our area or towns look and perceptions on whether the district is a great place to live are all important to our overall quality of life. These are also important in determining how people from outside the district view us.

The Clutha District Council's 2007 Resident Survey asked respondents about the extent to which they agreed that there was a great sense of community where they lived. Eighty one percent of respondents either agreed or strongly agreed that there was a great sense of community where they lived. Only 5% of respondents disagreed (or strongly disagreed) with this statement.

The Clutha District is a great place to live



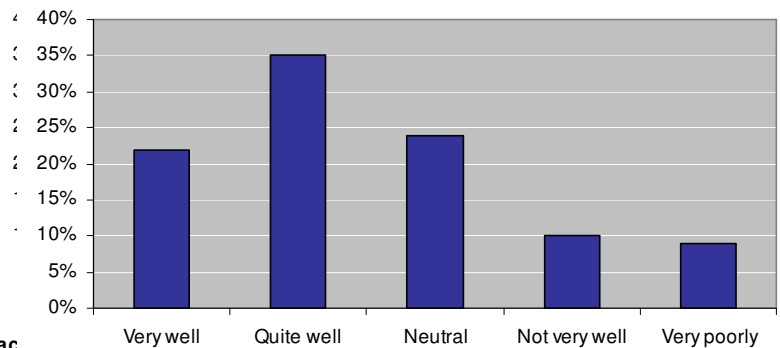
The 2007 Resident Survey also asked the extent to which respondents agreed with the statements "I have a sense of pride for the way my area or local town looks" and "The Clutha District is a great place to live". Eighty one percent of respondents agreed or strongly agreed that they had a sense of pride for the way their area or local town looks and 91% agreed or strongly agreed that the Clutha District is a great place to live. These figures indicate that the majority of respondents like and are happy living within the Clutha District.

District Branding

New branding for Clutha has been developed in recent times to help promote the district and its communities, both locally and externally. The catch cry for the brand is 'Clutha Country - where everyone says hello'. Clutha could well be the last remaining district in New Zealand where people not only say hello to each other on a daily basis, but wave at strangers and passing visitors, who can't help but 'wave back'.

The Clutha District Council Resident Survey 2007 asked respondents whether they were aware of the slogan and how well they thought the slogan represented the Clutha District. Eighty one percent of respondents indicated that they were aware of the slogan. Fifty seven percent believed that the slogan represented the Clutha District quite well and very well. Twenty four percent were neutral and 19% did not think it was a good representation of the district.

Slogan represents Clutha District



Community Leadership

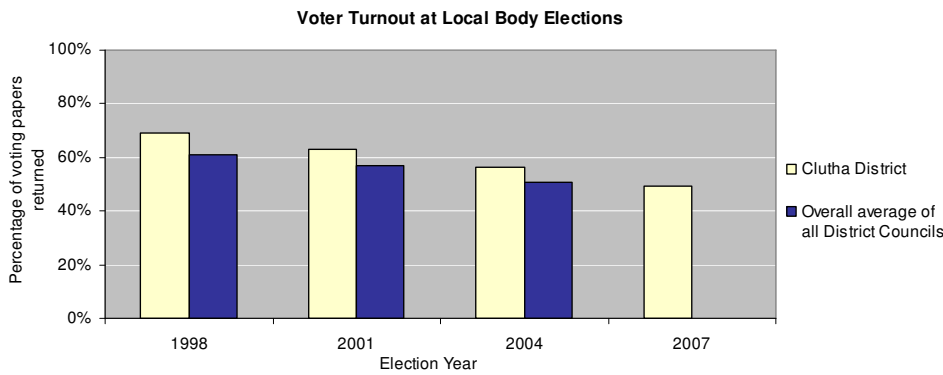
Satisfaction with leadership is seen to be one of the indicators of a strong and positive community. The 2007 Resident Survey asked respondents whether they were satisfied with the decision making, planning and leadership of the mayor and councillors. They were also asked

if they were satisfied with the performance of the Clutha District Council. Fifty two percent of respondents indicated that they were satisfied or very satisfied with the mayor and councillors which was up 6% from the 2006 survey. Ten percent of respondents were dissatisfied.

Voter Turnout

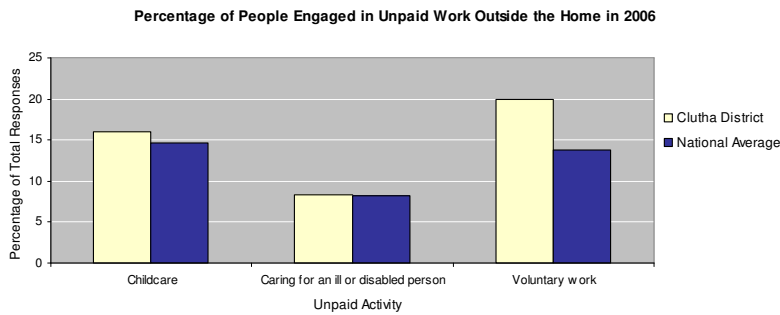
Part of encouraging strong positive communities is ensuring that communities are well informed and have their say in decisions that affect them. One indicator for this is voter turnout. In 2007, 49% of voting papers were returned for the local body elections. This was down on the previous election where 56% of voting papers were returned. The return of voting papers has consistently decreased since the 1998 elections, indicating that less people are taking the opportunity to have their say on who represents them. This is in line with the national trend of declining voting turnout for local body elections. A number of factors could be the cause of this including whether there are any

contested wards, whether there was a mayoral contest and the number of candidates standing.



Volunteering

Unpaid work is an indicator of people's willingness and ability to act for others and to enhance the common good. It also assists people to build and maintain social networks that help society to function effectively. This also contributes to encouraging strong communities.



The 2006 census shows that 20% of Clutha district residents aged 15 years and over are engaged in some sort of voluntary work. This is significantly higher than the national average of 14%.

Youth

Developing and promoting opportunities for our young people to stay in or return to the district is part of encouraging strong, positive and enterprising communities. Work'n it Out is a Youth Transition strategy for school leavers aged 15 - 20 years in Work and Income Southern Region. According to the summary for the Clutha District, there are 282 school leavers residing in the Clutha District of which 178 are in sustainable work, training or education or will be entering into one of these in the very short term. This leaves 104 school leavers who are either not in work or not in sustainable work.

Community Support

Council assists community groups in the Clutha District through its Community Grants scheme, its Rental Reimbursement scheme and reimbursement for fees and charges. Community grants are made to district museums, district swimming pools, district halls, sporting groups, historical societies and heritage groups, information centres and much more. All grants contribute towards a District Directions community outcome and the amount of grants and reimbursements have increased since 2007.

What else is being done?

Key initiatives to encourage strong, positive and enterprising communities in the Clutha district are:

- TrustPower awards to recognise volunteers
- Creative Communities NZ Funding Scheme
- Clutha District Council Community Grants Scheme and reimbursement schemes

Lead Partners

- Clutha District Council
- District Development Board
- Positively Clutha Women
- Ministry for Social Development
- Community Trust of Otago
- Clutha Licensing Trust
- Community organisations
- TrustPower

Clutha Country – Where everyone says hello!

In response to public input through the last Community Outcomes and Long Term Plan processes, Council and its district development arm, the District Development Board, gave new emphasis towards promotion of the district.

Feedback was clear that the community was keen to see more emphasis on building pride in our district. Promotion was also a strong theme, but in the sense of promoting to ourselves as well as outsiders, creating a ‘take pride in where we live’ type of feeling.



On the back of this feedback, Council set aside \$93,000 over three years for a promotional campaign aiming to promote the district to residents, visitors and immigrants. This included funding for the development and construction of new ‘welcome to’ signs on the main entrance routes to the district. After further consultation with the community and other key stakeholders, the new district brand, ‘Clutha Country – Where everyone says hello’, was launched in November 2006, and has received a positive response and support from the community since that time. Council, in partnership with contractor Enterprise Clutha, has made available promotional material, such as t-shirts, pens, postcards and brochures, to approved groups for community events which help promote the district – both to tourists and to locals. The promotional material has proved so successful that the District Development Board is continuing to look at introducing new products such as A4 presentation folders and thank-you cards.

The first of the new Clutha Country district boundary signs was unveiled just north of Waihola in February 2008, while two further district boundary signs (at Raes Junction, and at the district’s southern boundary), as well as smaller district boundary signs at various other locations have also been erected.

The Clutha Country website (www.cluthacountry.co.nz), also continues to be an important tool in terms of attracting potential new residents, investors, business, owners as well as visitors, and ‘welcome to’ packs are currently being developed.

A Clutha Country song, coordinated by Positively Clutha Women and supported by the Creative Communities NZ Funding Scheme, has also proved very popular and generated community pride amongst local primary schools pupils.

Outcome 7: Providing the infrastructure we need to move forward

Why is this important?

Providing affordable infrastructure that helps our numerous widespread communities function is important.

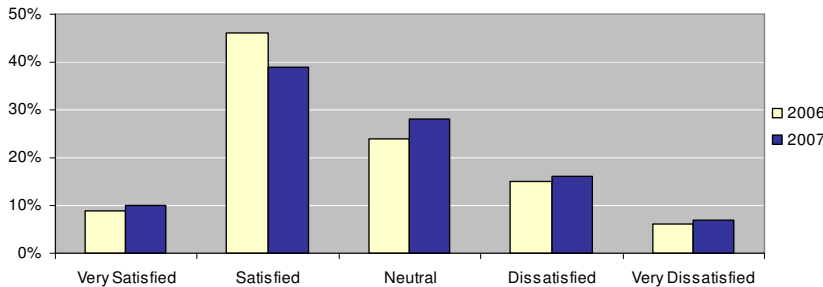
How are we doing?

Roading

Clutha has the second largest local roading district in New Zealand. Maintaining and improving this network is essential.

According to the Clutha District Council Resident Survey 2007, 49% percent of respondents said they were either satisfied or very satisfied with the appropriateness of local roads for their travel. Twenty three percent of respondents were dissatisfied or very dissatisfied while 28% were neutral. Wanting more maintenance of gravel roads and tarsealing were the main reasons for the dissatisfaction ratings.

Resident Satisfaction with Local Roads, Clutha District

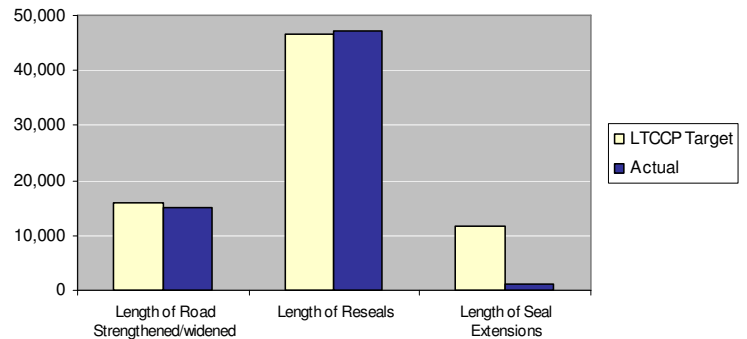


The recent sealing of Finlayson Road, on the Southern Scenic Route has been a key achievement (refer to the article over the page).

Water

Major rural water supply upgrades have increased the quantity and reliability of water supplied in farming areas. Urban water supply upgrades have focused on improving treated water quality towards the new Drinking Water Standards, and a new water plant has been completed to meet the present and future needs of the Otago Corrections Facility as well as the Milton township. Sewerage and stormwater drainage have

Work programme for the Clutha District



been improved via a number of extensions and upgrades, including the piping of Hospital Creek through urban Balclutha.

Telecommunications

Access to telecommunications is a measure of ensuring that effective communication technology is available throughout the district. This is also essential to providing the infrastructure we need to move forward.

The Social Report 2008 shows that access here has improved since 2001, especially household internet, but still remains slightly below the national average. At the time of the 2006 census, 97% of residents in the Clutha District have telephone access in the

home compared with the national average of 98%. Sixty one percent of residents had internet access in the home in 2006 compared with 32% in 2001. This was below the national average of 66%.

Residential Development

Providing the infrastructure to support residential development in the district can be measured by the value and number of residential building consents. A total of 77 new dwellings worth \$17.5 million were authorised for construction in the year ended March 2008. This was 1.3% fall in numbers and 5.8% rise in value from the previous year.

What else is being done?

Key initiatives that contribute to providing the infrastructure we need to move forward are:

- Footpath programme
- Water Scheme Upgrade
- Water Treatment Plant Upgrade
- Proposed TrustPower 200MW wind farm north of Lake Mahinerangi
- Department of Conservation upgrade at the lighthouse in Kaka Point
- Nugget Point Rooding

Lead Partners

- Clutha District Council
- New Zealand Transport Agency
- Contractors and Consultants
- Telecommunication Providers
- Electricity Suppliers

Sealing of Finlayson Road



Mayor Juno Hayes described it as a historic day for the Clutha District when he officially opened the newly sealed Finlayson Road on 2 March 2008.

The 10km section of Finlayson Road, connecting the towns of Taieri Mouth and Waihola, was the last remaining section of the 440km Southern Scenic Route to be sealed.

As well as benefiting those tourists travelling the iconic Southern Scenic Route, local residents have also publicly expressed their satisfaction with the seal extension. Several locals who attended the official opening said they looked forward to a much safer and more comfortable journey and reminisced of travelling over the road when it was a little more than a 'dirt track'.

The \$2.6 million sealing project, completed by contractors SouthRoads and MWH New Zealand Ltd, was one of the first significant projects in Otago to be funded from the Regional 'R' Fund. This fund was made available by the Land Transport New Zealand through the extra 5c fuel tax levied per litre of fuel sold since 2005. The fund amounts to about \$95 million to be spent throughout the Otago region during the initial 10-year period.

Through the fund, Land Transport NZ paid 70% of the total construction costs covered by R-funding.

Overview - Highlights and Challenges

Overall the Clutha District is progressing well on a number of fronts including:

- Strong sense of community
- Strong sense of pride for the way our towns and areas are looking
- Agreement that the Clutha District is a great place to live
- Falling crime rate
- Increased number of employees and businesses
- Low unemployment rate
- Satisfaction with our community centres, halls, recreational opportunities, sporting facilities and opportunities
- Increased number of modern apprenticeships and industry trainees
- Access to quality educational facilities

Areas for improvement include:

- Increasing tourism opportunities
- Reducing accidents and subsequent ACC entitlement claims
- Increasing community and personal preparedness for Civil Defence emergencies
- Increasing the usage of our swimming pools
- Improving water quality by reducing the level of E.coli in our rivers and streams
- Lowering the district's rate of school leavers who have no qualifications
- Reducing crash rates on both local roads and state highways

